

## LuxEOS Flood 9 - 18 - 36 - Beam 20 - 40 - 80

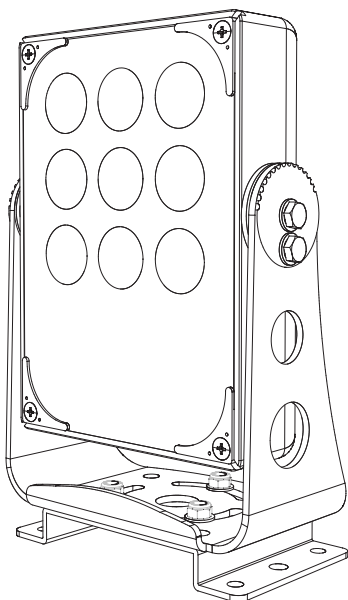
LED LUMINAIRES FOR ARCHITECTURAL LIGHTING

### MECHANICAL DETAILS - OPTIONAL MOUNTING PLATES

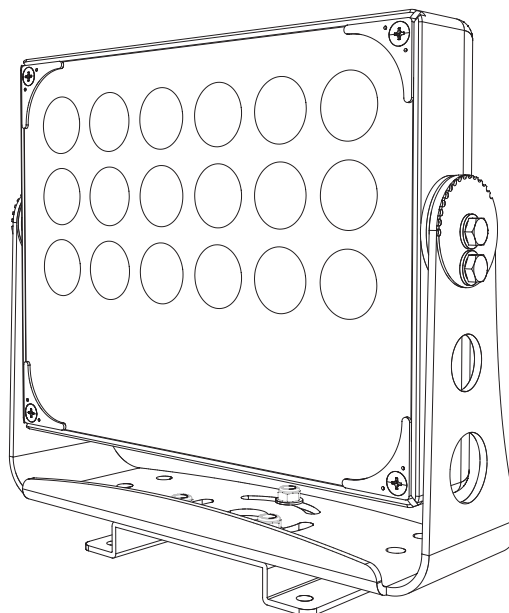
#### Mounting Brackets

Two optional mounting brackets are available, one to fit the LuxEOS 9 & Beam 20, LuxEOS 18 & Beam 40, and one to fit the LuxEOS 36 and Beam 80

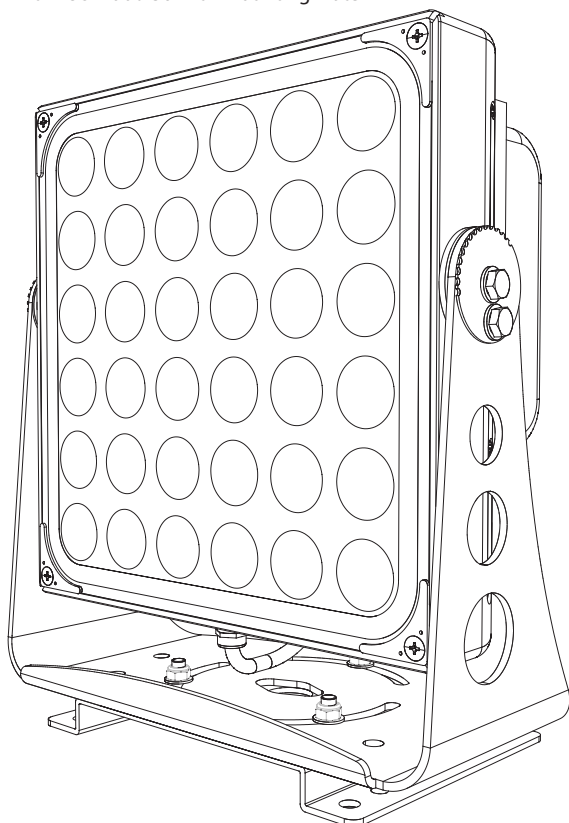
LuxEOSFlood 9 fitted with Mounting Plate



LuxEOS Flood 18 with Mounting Plate



LuxEOS Flood 36 with Mounting Plate

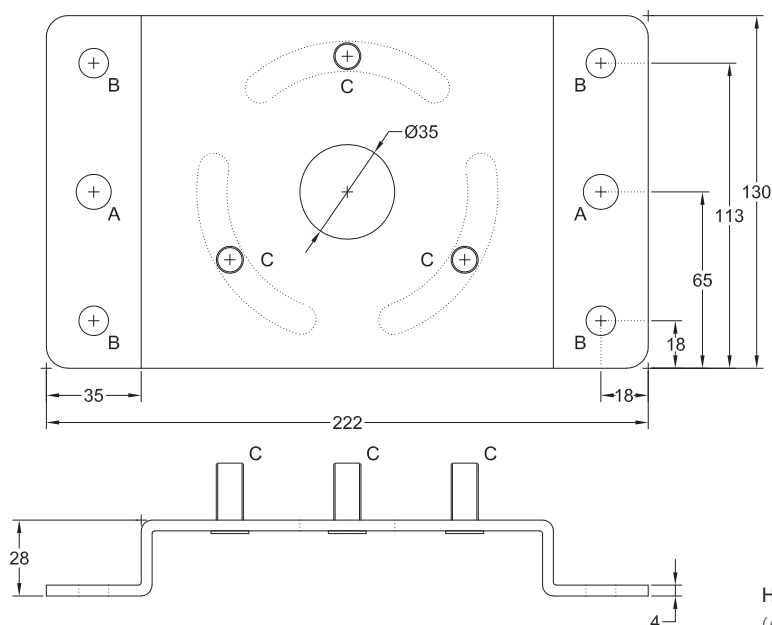


## LuxEOS Flood 9 - 18 - 36 - Beam 20 - 40 - 80

LED LUMINAIRES FOR ARCHITECTURAL LIGHTING

### MECHANICAL DETAILS - OPTIONAL MOUNTING PLATES

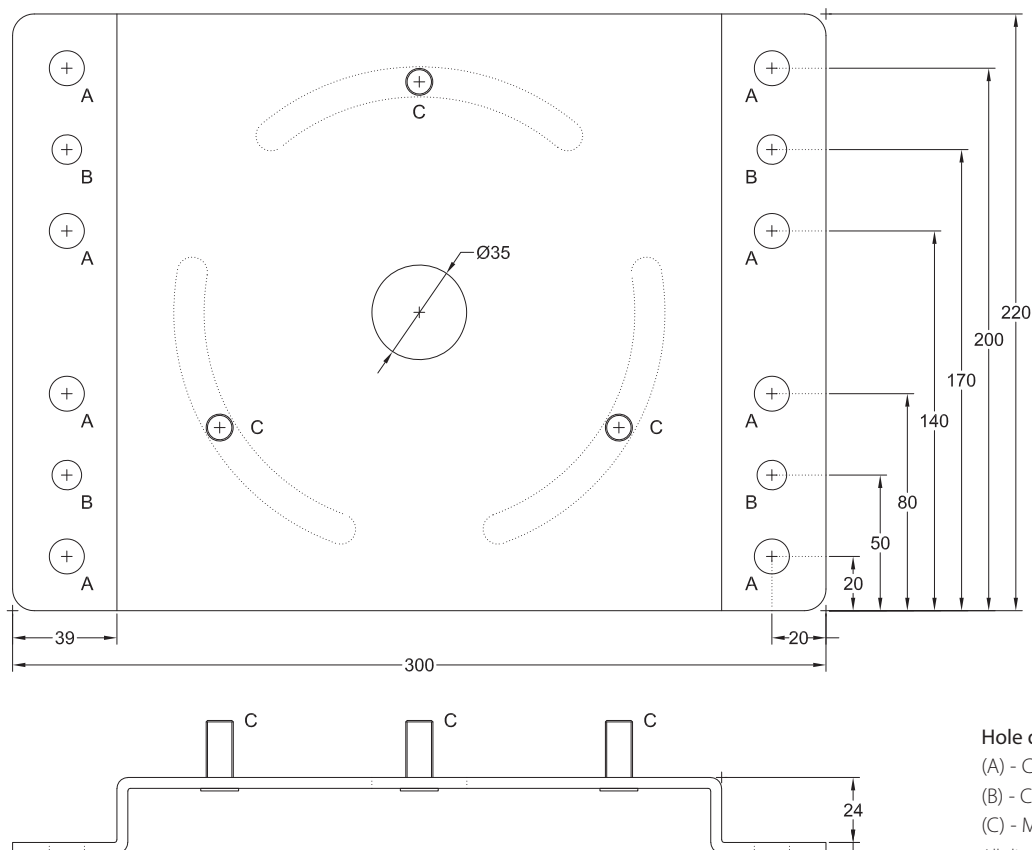
LuxEOS Flood 9 & 18, Beam 20 & 40 Mounting Plate



#### Hole details

- (A) - Clearance for M12 fixings
- (B) - Clearance for M10 fixings
- (C) - M10 Studs for Standard Yoke

LuxEOS Flood 36 & Beam 80 Mounting Plate



#### Hole details

- (A) - Clearance for M12 fixings
  - (B) - Clearance for M10 fixings
  - (C) - M10 Studs for Standard Yoke
- All dimensions in mm

## LuxEOS Flood 9 - 18 - 36 - Beam 20 - 40 - 80

LED LUMINAIRES FOR ARCHITECTURAL LIGHTING

### ADDITIONAL INFORMATION

#### Product Weights (luminaires)

LuxEOS Flood 9	7.2 kgs	LuxEOS Beam 20	7.3 kgs
LuxEOS Flood 18	12.0 kgs	LuxEOS Beam 40	12.2 kgs
LuxEOS Flood 36	23.0 kgs	LuxEOS Beam 80	23.4 kgs

#### Maintenance

LuxEOS luminaires should be regularly tested and inspected, and as part of this checked for the build up of external moss and debris which can reduce the light output. If cleaning is required, then a mild water based detergent should be used, care should be taken to avoid the use of harsh solvent based cleaning materials as this could result in damage to the luminaire. Under no circumstances should pressure washers be used for cleaning.

The light source contained in this luminaire shall only be replaced by Pulsar or an authorised service agent or a similar qualified person.

#### Standards

LuxEOS luminaires conform to the following standards and certification.



UKCA



European CE



RoHS



WEEE

#### Warranty

Five years from the date of original purchase.

The warranty covers defects in manufacturing workmanship and materials. It is limited to parts and labour.

The warranty becomes void if the product is :-

- A Misused.
- B Not used in accordance with the instructions.
- C The cable connections are not made according to our instructions if the unit is used in damp or wet environments.
- D Repairs are made by unauthorised persons.
- E The serial number label has been removed or defaced.

Pulsar's maximum liability shall not exceed the price paid for the product.

In the unlikely event of a fault occurring, do not use without repair, return the product, with a description of the fault, to your supplier or direct to Pulsar for immediate attention.

Full warranty details are available on request or from our website at [www.pulsarlight.com](http://www.pulsarlight.com).

As part of our commitment to continuous improvement PULSAR may change the specifications of its products without prior notification or public announcement.

All descriptions, illustrations, drawings and specifications in this publication present only general particulars and shall not form part of any contract.

Please visit our website for the most up to date information.