

Kirium Bollard

Lighting with Purpose



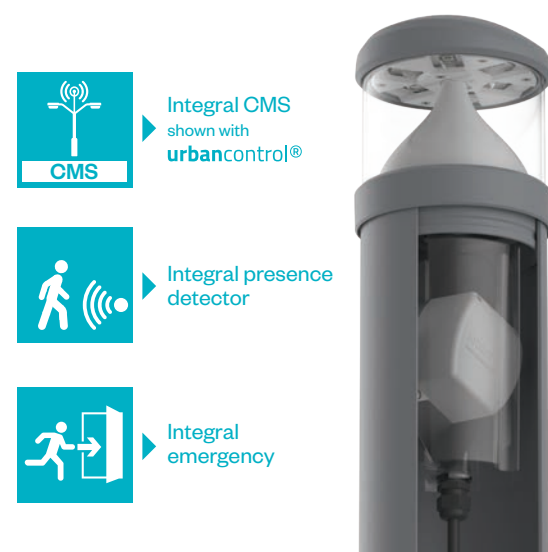


Light the way

A range of classically styled, vandal resistant IK10 bollards with market-leading optical performance. For purpose illumination: promoting safe navigation through campuses, car parks and public spaces.

Key advantages

- Smart City ready
- Robust, vandal-resistant design
- Industry leading optical performance
- Integral CMS and presence detector
- Integral emergency option available
- BREEAM compliant
- Low glare
- 2700K / 3000K / 4000K



Applications



Two styles

Curved

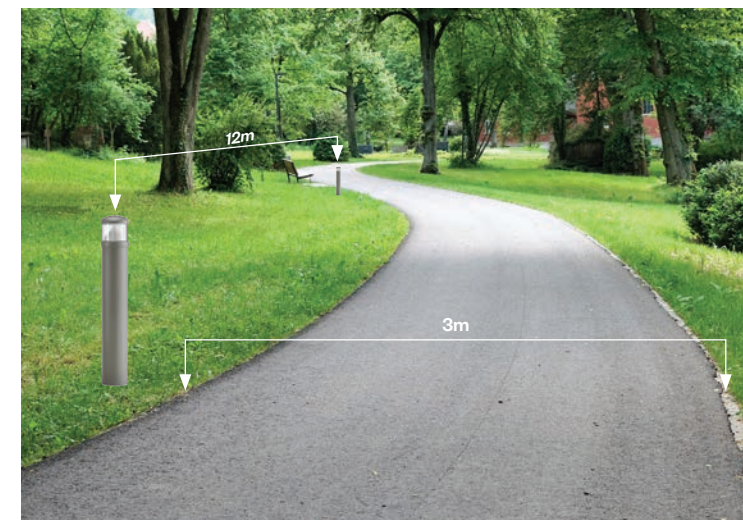
Angular

Ø160mm

Ø200mm



Optical performance

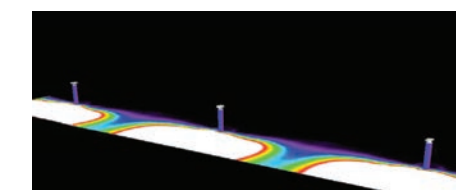


Example lighting levels

Typical result at 12m spacing, on a 3m wide path - designed to achieve P lighting classes

Lighting Class P2

Path Width	3m
Eav	10.0 – 15.0lx
Emin	2.0lx



Kirium 160

Class leading uniformity, with no visible hotspot.

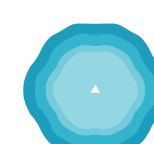
Asymmetric



Asymmetric (with backshield)



Symmetric



Kirium 200

Performance spread for area illumination, providing optimal spacing for pathways up to 3m in width.

Asymmetric – narrow



Asymmetric – medium



Asymmetric – wide



Symmetric



A family solution

Complementary to our Kirium Pro range of street lighting and wall luminaires: a complete family solution for your project needs.



Features

Vandal resistant design available in a choice of two styles and two diameters, complementary to Kirium Pro range

High performance optics with low glare for best in class uniformity, offered in symmetric and asymmetric distributions

Optical Control

Symmetric

Asymmetric (Narrow / Medium / Wide)

180° (with light shield accessory)

Lifetime

L80 B10 – in excess of 100,000 hours

Total Luminaire Lumens

Kirium Pro Bollard 160: 1,100 lm

Kirium Pro Bollard 200: 2,050 lm

Colour Temperature

2700K / 3000K / 4000K

Colour rendering index

80Ra (2700K) / 70Ra (3000K / 4000K)

Control

DALI/1-10V pre-programmed dimming

3 hour emergency battery backup

Integral CMS (Urban Control, Telensa or Mayflower)

Presence detector option

Colours

RAL 9005 Black

RAL 7046 Grey

RAL 7035 Light grey

(Other RAL colours available on request)

Materials

Head: LM6 die-cast aluminium / Body: Aluminium

Glazing: Polycarbonate

Seals: Silicone

Finish: Textured polyester powder coat

Mounting

Root / Flange / Bolt-on Root Accessory Option

Product codes

		Code	Example
Family			
Kirium		KIB	KIB
Style			
Curved		C	C
Angular		A	
Diameter			
160		16	16
	200	20	
Colour Temperature			
2700K	2700K	27	30
3000K	3000K	30	
4000K	4000K	40	
Light Distribution			
Symmetric	Symmetric	SY	SY
-	Asymmetric (Narrow)	AN	
Asymmetric (Medium)	Asymmetric (Medium)	AM	
-	Asymmetric (Wide)	AW	
180° Shield			
180° light shield		S	N
No light shield		N	
Light Output			
Drive currents from 250mA to 700mA available in 50mA increments. Insert drive current value (eg 500mA = 500)		250 / 250 / 300 350 / 400 / 450 500 / 550 / 600 650 / 700	500
Colour Finish			
RAL 7046 Mid grey		CF	10
RAL 7035 Light grey		29	
RAL 9005 Black		10	
Mounting			
Root mounted		R	F
Flange mounted		F	
Mounting Accessories (optional)			
Bolt-on root		B	B
Connectivity & Control			
Integral CMS - Urban Control		IUC	IUC
Integral CMS - Telensa		ITE	
Integral CMS - Mayflower		IMA	
Pre-programmed dimming*			
Presence Detector (optional)			
Presence detector [200 only]		PD	PD
Emergency Version (optional)			
3-hour emergency		EM	-
Example Code: KIB C 16 30 SY N 500 10 F B IUC PD			

* Class II on request

DW Windsor

Pindar Road, Hoddesdon, Hertfordshire, EN11 0DX
+44 (0) 1992 474600 | info@dw Windsor.com
dw Windsor.com

DW Windsor is a Carbon Neutral company
© 2025 DW Windsor Ltd. All rights reserved.



LUCECO plc DW Windsor is part of the Luceco Group