

NORDSTROM 2 (NOD-50012) (Version 1)



Product description

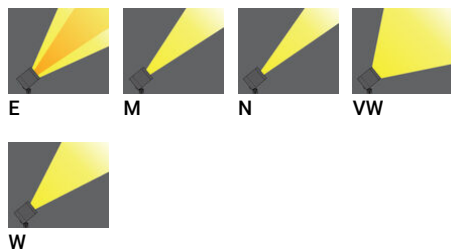
With remote driver IP-rated - Constant voltage (CV) 24 V - 82x82 mm - Class III - RGBW



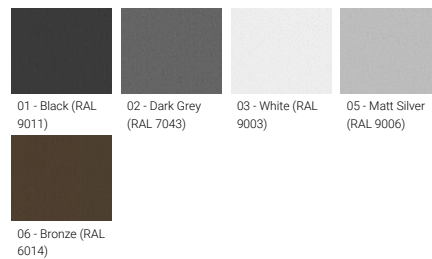
Luminaire Structure

- Die-cast aluminium housing
- Pre-treated before powder coating ensuring high corrosion resistance
- Thermal heat dissipation body
- Single cable entry, through wiring upon request
- One IP68 connector supplied with 0.2 m of 3x1.0 sqmm outdoor cable for NOD-50001, NOD-50011, NOD-50021, NOD-50031
- One IP68 connector supplied with 0.2 m of 8x0.5 sqmm outdoor cable for NOD-50002, NOD-50012, NOD-50022, NOD-50032
- Stainless steel fasteners in grade 304 with zinc flake coating (ZFC)
- Durable silicone rubber gasket
- High-efficiency PMMA lens
- Clear toughened glass
- Remote driver (included)

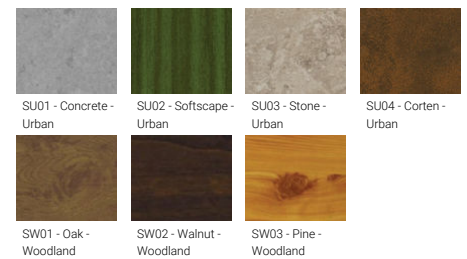
Light symbol



Product colour



Special finishes upon request



NORDSTROM 2 (NOD-50012) (Version 1)

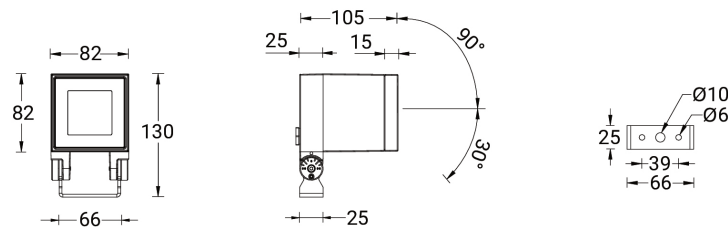
Technical information

Material	Aluminium
Light source	4 LED
Power (Luminaire)	13 W
Lumen (Luminaire)	406 - 520 lm
Luminaire luminous efficacy	41 - 52 lm/W
Driver option	Remote driver (included)
Driver	Constant voltage (CV)

Input voltage	24 VDC
Optic	E, M, N, VW, W
Optic value	17°, 26°, 43°x11°, 65°, 8°
Optic (2nd)	M, VW, W
Optic (2nd) value	23°, 32°, 43°
CCT / CRI	RGBW30, RGBW40
Dimming type	DMX, DMX/RDM

Product colours	Black, Dark Grey, White, Matt Silver, Bronze, Concrete - Urban, Softscape - Urban, Stone - Urban, Corten - Urban, Oak - Woodland, Walnut - Woodland, Pine - Woodland
Weight	1.3 kg
Operating temperature	-20 °C to 40 °C
Through wiring	Single cable entry, through wiring upon request
Lens / Reflector / Optic	High-efficiency PMMA lens, Clear toughened glass

NOD-50012



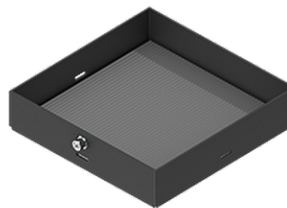
Accessories



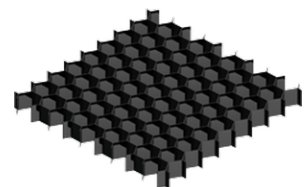
DMX Control System
Control-DMX



DMX/RDM Control System
Control-DMX-RDM



Linear spread lens
A51214



Honeycomb louvre
A51921

NORDSTROM 2 (NOD-50012) (Version 1)

Anti-glare visor

A52931

Please contact the factory for technical details if you wish to use Anti-glare accessories, Colour filters, Lenses and slip glasses in combination.