

NEMO



Powerful professional underwater adjustable projector family. Offering solutions for even the largest of water features.

Luminaire structure

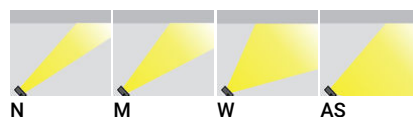
- Stainless steel body and fasteners in grade 316
- Single cable entry
- Durable silicone rubber gasket
- High-efficiency optical reflector
- Clear toughened glass
- Maximum depth 2 meters
- Luminaire must be submerged when operational
- Accessory must be ordered separately
- Remote driver is included
- Remote IP box is not included
- Outdoor cable needs to be ordered with a specific length



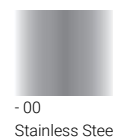
Feature



Light symbol



Product color



We reserve the right to make technical and design changes.

05:09, 16-01-2020

<https://www.ligman.com/nemo-underwater-projectors-floodlights-ne-un3/>

EUROPE
LIGMAN EUROPE s.r.o.
VGP Park Ústí nad Labem
P 2 120
40317, Přestanov
Czech Republic
+420 477 071 500
sales.cz@ligman.com

ASIA PACIFIC
LIGMAN Lighting Co.,Ltd.
17/2 Moo4 Monthong
Bangnampreaw
24150, Chachoengsao
Thailand
+66 2 108 6700
info@ligman.com

NEMO

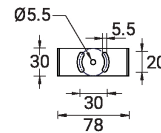
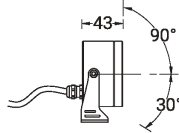
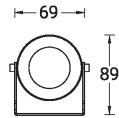
Technical information

	Model number	Lamp	Power	Lumen	Optic	CCT	Dimming Type	Weight
Remote driver - Without remote IP box								
NEMO 1	NM-50001	1 COB	14 W	1173 - 1426 lm	N [25°], M [33°], W [50°]	3000K, 4000K	DALI, 1-10V, On/Off	0.8 kg
NEMO 2	NM-50011	1 COB	20 W	1729 - 1852 lm	N [24°], M [39°], W [54°]	4000K, 3000K	On/Off, DALI, 1-10V	1.6 kg
NEMO 3	NM-50021	1 COB	27 W	2186 - 2937 lm	N [22°], M [35°], W [52°], AS [46°x56°]	3000K, 4000K	1-10V, DALI, On/Off	2.9 kg

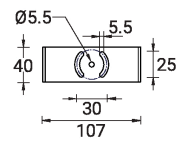
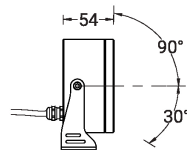
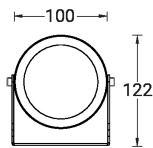
Accessories

	Remote box IP65 A61551	Remote box IP65 A80191
NM-50001		
NM-50011	•	
NM-50021	•	

Nemo 1



Nemo 2



Nemo 3

