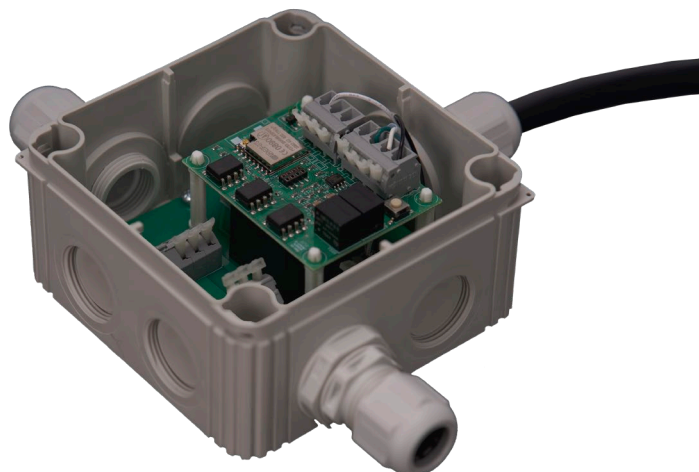


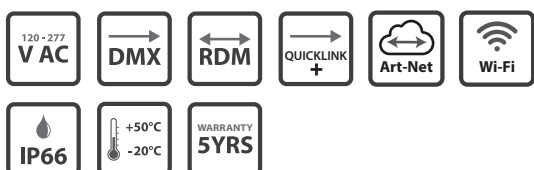
## LuxNODE

ARTNET TO DMX CONVERTER FOR LuxEOS AND FIRA LUMINAIRES



A compact and wireless **ArtNet** to **DMX512** converter with **RDM** compatibility and QuickLINK+ connectivity

### KEY FEATURES



### INTRODUCTION

The LuxNode Install box is a wireless ArtNet to DMX512 converter housed in an IP66 waterproof enclosure. It can operate in standalone mode as a Wi-Fi access point or connect to any 2.4GHz Wi-Fi network. The LuxNode will also receive sACN and is capable of outputting two full DMX512 universes

### MAINS VOLTAGE

The LuxNode Install Box is mains powered and has a QuickLINK+ output connector enabling the quick connection of the mains supply and DMX control to any LuxEOS or FIRA luminaire, thus making it ideal for installations with pre-existing mains wiring.

### PORTS

The LuxNode has two ports which can be configured individually. Each port can output a single DMX universe.

### WiFi CONFIGURATION

The LuxNode can be easily configured and set up using a laptop or mobile device. Simply connect to the LuxNode network, enter your login details and using the browser of your choice.

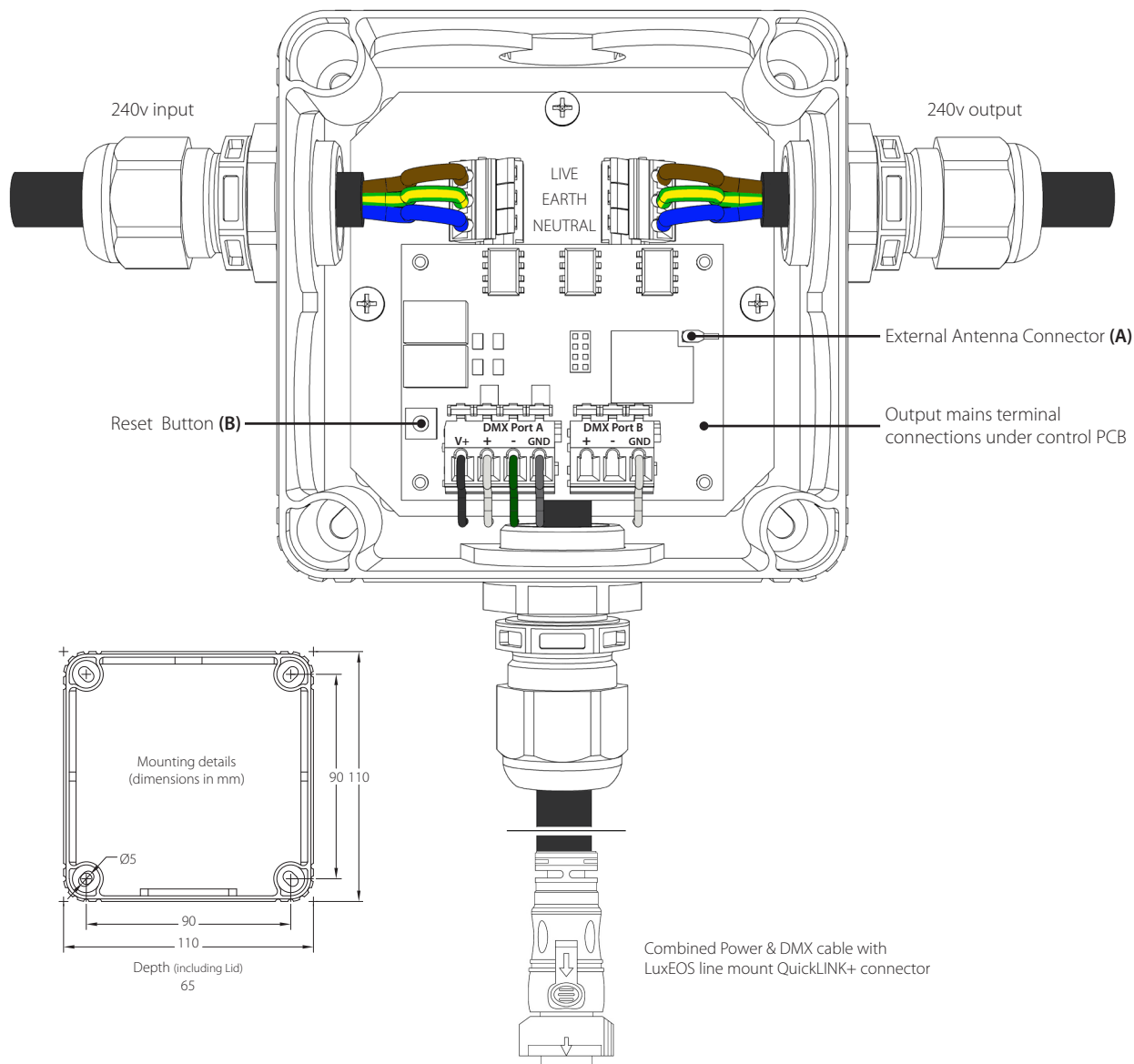
### SPECIFICATION

Physical	Dimensions	110 mm x 110 mm x 66 mm
	Weight	460g
	Ingress Protection	IP66
Electrical	Voltage	120 - 277 V AC
	Wattage	1 Watt
	Connectors	Port A : V+, DMX+, DMX-, GND Port B : DMX+, DMX-, GND
	Control	DMX, RDM, ArtNet, Wi-Fi

## LuxNODE Installation Box

ARTNET TO DMX CONVERTER FOR LuxEOS AND FIRA LUMINAIRES

### CONNECTION DETAILS



#### Power in & through

The power cable should be no greater than 4mm<sup>2</sup> and can be either stranded or solid cores. The maximum current of each cable run should be no greater than 20A continuous. Before fitting the power cable, each cable end should be stripped to between 9 and 11mm before inserting into the connectors. Ensure connections are made in accordance to the markings on the PCB, failure to do so may result in damage to the luminaire.

#### QuickLINK+ Connection

A 900mm trailing cable with a line mount QuickLINK+ connector is fitted which provides both Power and DMX for a single LuxEOS range luminaire.

#### DMX 512

DMX connections are provided for two DMX Universe outputs Port A is via the 4 way connector and Port B via the 3 way.

The default connection is Port A + (data +) - (data -) GND (Screen)

Low voltage power (24VDC) for the DMX receiver PCB is provided from the V+ and GND terminals, these cables must remain connected for operation.

#### Antenna

The supplied antenna should be connected to the PCB connector (A) as shown before operation.

If the antenna is not connected, the device will not function correctly, the antenna does not require a ground plane.

#### Reset

Press the Reset Button (A) once to restart the device. Press the reset button 5 times in quick succession to reset to factory defaults.

# LuxNODE Installation Box

ARTNET TO DMX CONVERTER FOR LuxEOS AND FIRA LUMINAIRES

## SETUP

### DEVICE STATUS

When the LuxNode is powered up for the first time, it will start in standalone mode after approximately 15 seconds. Using any Wi-Fi device such as a mobile phone, tablet or PC, connect to the LuxNode by browsing and connecting to the LuxNode network. The network is named **PulsarNode-\*\*\*\*\*** with the asterisks representing the last six digits of the devices serial number.

Once connected you will be asked for the passphrase, which by default is **pembrokeavenue**. Once you have joined the wireless network your device will be assigned an IP address via DHCP which will likely be 2.0.0.100 with the LuxNode having the IP address 2.0.0.1

Open your browser of choice and go to the IP address of the LuxNode (2.0.0.1). You will see the **Device Status** page below :-

Pulsar ArtNet & sACN to DMX & LED Pixels	Device Status
<b>DEVICE STATUS</b>	Device Name: PulsarNode-05002
<b>WIFI</b>	MAC Address: Ao:20:A6:15:DF:B2
<b>IP &amp; NAME</b>	Wifi Status: No Wifi. Hotspot started. Hotspot SSID: PulsarNode-05002
<b>PORT A</b>	IP Address: 2.0.0.1
<b>PORT B</b>	Subnet Address: 255.0.0.0
<b>SCENES</b>	Port A: DMX output
<b>FIRMWARE</b>	Port B: DMX output
<b>REBOOT</b>	Scene Storage: Not outputting 0 Scenes Recorded 0 of 250KB used
Design by Pulsar	Firmware: v2.0.0 (beta 5g)
	Coding and hardware © 2018 Pulsar TM - Mike Whitley.

The status of the device is displayed on this page. If you intend to connect to a pre-existing Wi-Fi network, then it is suggested that you make a note of the MAC address so you can use it for a DHCP reservation.

### IP & NODE & NAME

Pulsar ArtNet & sACN to DMX & LED Pixels	IP & Node Name
<b>DEVICE STATUS</b>	Short Name: PulsarNode-05002
<b>WIFI</b>	Long Name: Pulsar ArtNet node - 507502605002
<b>IP &amp; NAME</b>	Enable DHCP: <input checked="" type="checkbox"/>
<b>PORT A</b>	IP Address: 2 0 0 1
<b>PORT B</b>	Subnet Address: 255 0 0 0
<b>SCENES</b>	Gateway Address: 2 0 0 1
<b>FIRMWARE</b>	Broadcast Address: 255.255.255.255
<b>REBOOT</b>	
Design by Pulsar	Save Changes
	These settings only affect the main WiFi connection. The hotspot will always have DHCP enabled and an IP of 2.0.0.1

The **Short Name** field contains the device name. This will be visible on your network if connected to a pre-existing network. The name will be unique and it is made up of the device serial number/RDM UID. This name can be changed but should be kept unique.

The **Long Name** field is presented to an ArtNet controller. This name will also be unique as it contains the device serial number/RDM UID. This name can be changed but should be kept unique.

The **Enable DHCP** box should be unchecked if not using DHCP for either standalone mode or network connected mode. If not using DHCP, enter the network specific **IP Address**, **Gateway Address** and **Subnet Mask** in the remaining fields.

# LuxNode Installation Box

ARTNET TO DMX CONVERTER FOR LUXEOS AND FIRA LUMINAIRES

## WiFi CONFIGURATION

To change the LuxNode Wi-Fi configuration, click the Wi-Fi link in the menu to the left of the page.

Once you are on the **Wi-Fi Settings** page, make any necessary changes. To save any changes, Click the **Save Changes** button in top right corner.

Pulsar  
ArtNet & sACN  
to  
DMX & LED Pixels

**DEVELOPMENT**  
**DEVICE STATUS**  
**WIFI**  
**IP & NAME**  
**PORT A**  
**PORT B**  
**SCENES**  
**FIRMWARE**  
**REBOOT**  
Design by  
Pulsar

### WiFi Settings

Save Changes

MAC Address: Ao:20:A6:15:DF:B2

Wifi SSID:

Password:

Hotspot SSID: **PulsarNode-05002**

Password: **pembrokeavenue**

Start Delay:  (seconds)

Stand Alone: ☒

In normal mode, the hotspot will start after *delay* seconds if the main WiFi won't connect. If no users connect, the device will reset and attempt the main WiFi again. This feature is purely for changing settings and ArtNet data is ignored.

Stand alone mode disables the primary WiFi connection and allows ArtNet data to be received via the hotspot connection.

If the device is to remain as a standalone device, you can change the password to prevent access to the ad-hoc network. The password must be between 8 and 20 characters long. If you intend connecting the LuxNode to a pre-existing network, you will need to enter the SSID and password on this screen.

### BEFORE SAVING CHANGES, YOU MUST UNCHECK THE STANDALONE CHECK BOX,

Failure to do this will start the LuxNode in standalone mode every time it is powered on. Click Save Changes to save. If the LuxNode fails to connect to your pre-existing network then it will revert to standalone mode after the time specified in the start delay field.

## DMX PORT A & PORT B SETTINGS

These pages are where the input and output characteristics for each port are defined.

Pulsar  
ArtNet & sACN  
to  
DMX & LED Pixels

**DEVELOPMENT**  
**DEVICE STATUS**  
**WIFI**  
**IP & NAME**  
**PORT A**  
**PORT B**  
**SCENES**  
**FIRMWARE**  
**REBOOT**  
Design by  
Pulsar

### Port A Settings

Save Changes

Port Type: **DMX Output**

Protocol: **Artnet v4**

Merge Mode: **Merge HTP**

Net:

Subnet:

Universe:

sACN Universe:

Coding and hardware © 2018 Pulsar TM - Mike Whitley.

**Port Type** defines the output protocol. The available options are **DMX output**, **DMX output with RDM** and **LED Pixels**.

*Note: DMX Input is not active in the current software version. Protocol is used to define the input protocol for the specific port. The options are ArtNet or ArtNet with sACN.*

**Merge Mode** defines if a higher or lower channel level takes priority if control is coming from multiple controllers.

**Merge HTP** gives higher level priority and **Merge LTP** gives lower levels priority.

**Net**, **Subnet** and **Universe** defines the settings for ArtNet. These should be adjusted in accordance with the output from your ArtNet controller.

**sACN** Universes should be set in accordance with the output from your controller.

**Port B** configuration is normally different to **Port A** but can be the same if necessary.

# LuxNode Installation Box

ARTNET TO DMX CONVERTER FOR LUXEOS AND FIRA LUMINAIRES

## SCENES

Planned for implementation in future firmware updates. Contact sales@pulsarlight.com for more information.

## FIRMWARE

As future developments are made to the firmware it is possible to upload them to the LuxNode from this page. The current software version is displayed both here and on the **Device Status** page.

Pulsar  
ArtNet & sACN  
to  
DMX & LED Pixels

DEVICE STATUS

WIFI

IP & NAME

PORT A

PORT B

SCENES

FIRMWARE

REBOOT

Design by  
Pulsar

Update Firmware

Firmware: v2.0.0 (beta 5g)

Choose Firmware

Upload Now

Coding and hardware © 2018 Pulsar TM - Mike Whitley.

## REBOOT

Click this link to reboot the device. After clicking the link you will receive a prompt to confirm that you want to reboot

## INFORMATION

### STANDARDS

LuxNode complies with the following international and national harmonised standards

Electrical Safety - EN 60598, EN 60598-2-13, EN 61347

EMC - EN 55015, EN 61547

RoHS - EN 50581

WEEE - EN 50419

### INFORMATION

Installation must be carried out by a qualified person in accordance with local and/or national electrical installation codes of practice.

Isolate the mains supply to the driver during installation and whenever subsequently disconnecting or reconnecting the fitting to avoid electric shock.

Use the correct polarity when wiring, if in any doubt please contact Pulsar.

Unplug this apparatus before lightning storms or when unused for long periods.

Unless authorised by Pulsar, field repairs of the LuxNode will void the warranty.

### WARRANTY

Five years from the date of original purchase.

The warranty covers defects in manufacturing workmanship and materials. It is limited to parts and labour.

The warranty becomes void if the product is :-

- A Misused.
- B Not used in accordance with the instructions.
- C The cable connections are not made according to our instructions if the unit is used in damp or wet environments.
- D Repairs are made by unauthorised persons.
- E The serial number label has been removed or defaced.

Pulsar's maximum liability shall not exceed the price paid for the product.

In the unlikely event of a fault occurring, do not use without repair, return the product, with a description of the fault, to your supplier or direct to Pulsar for immediate attention.

Full warranty details are available on request or from our website at [www.pulsarlight.com](http://www.pulsarlight.com).

As part our commitment to continuous improvement PULSAR may change the specifications of its products without prior notification or public announcement.

All descriptions, illustrations, drawings and specifications in this publication present only general particulars and shall not form part of any contract.

Please visit our website [www.pulsarlight.com](http://www.pulsarlight.com) for the most up to date information.

## PULSAR

1 Pembroke Avenue, Waterbeach, Cambridge, CB25 9QP

[www.pulsarlight.com](http://www.pulsarlight.com) | [sales@pulsarlight.com](mailto:sales@pulsarlight.com) | +44 (0) 1223 403 500