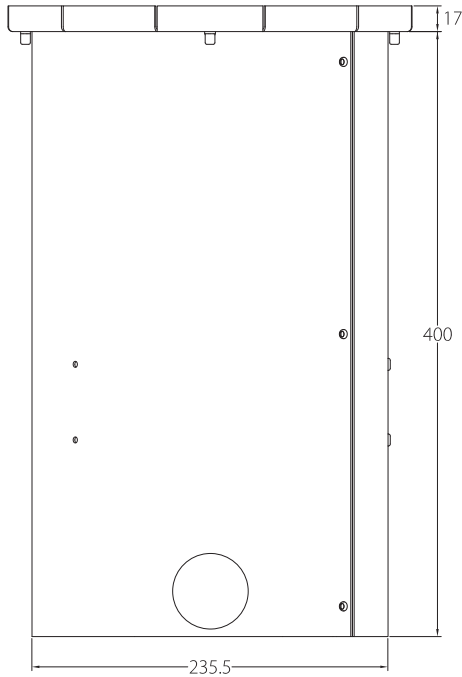


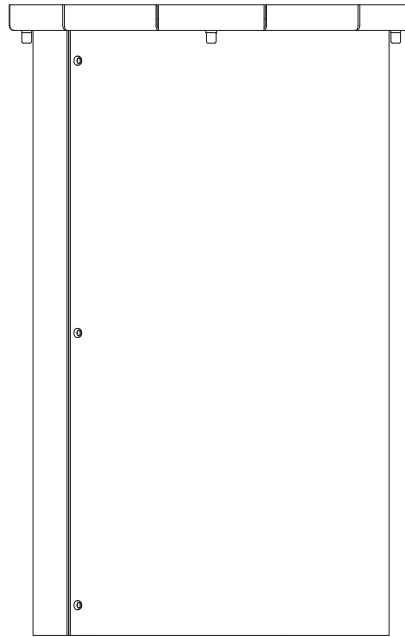
LuxEOS 9 Inground VIVID COLOUR & TUNABLE WHITE LED INGROUND FLOOD FOR ARCHITECTURAL LIGHTING

PRODUCT DRAWINGS - GROUND MOUNT KIT (All dimensions in mm)

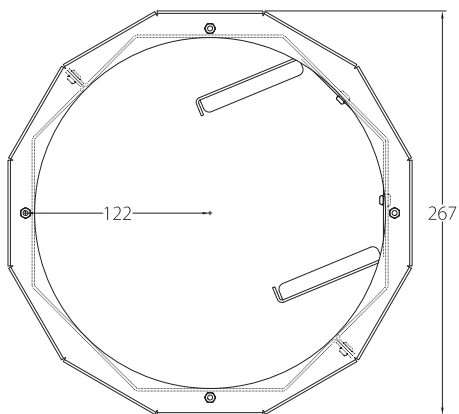
Ground Mount Front & Rear view



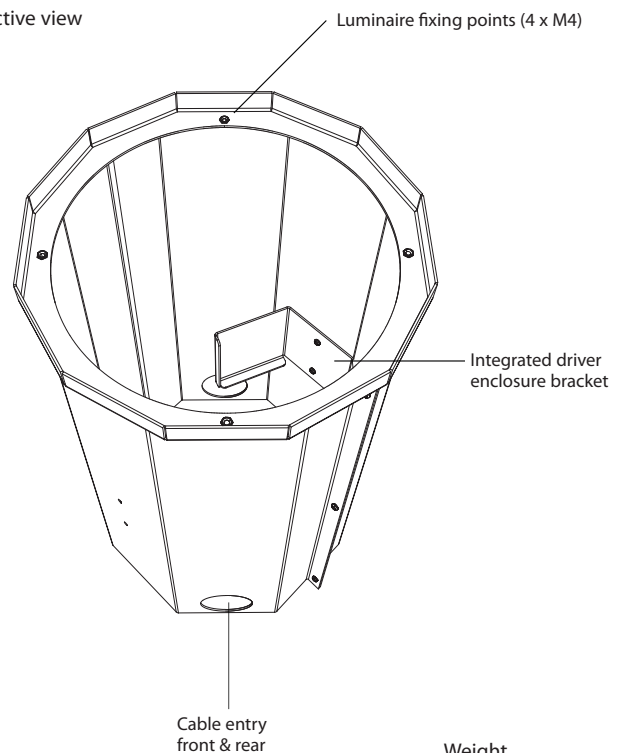
Left & Right view



Top view



Perspective view



Weight
Ground Mount - 4.5 kgs

LuxEOS 9 Inground VIVID COLOUR & TUNABLE WHITE

LED INGROUND FLOOD FOR ARCHITECTURAL LIGHTING

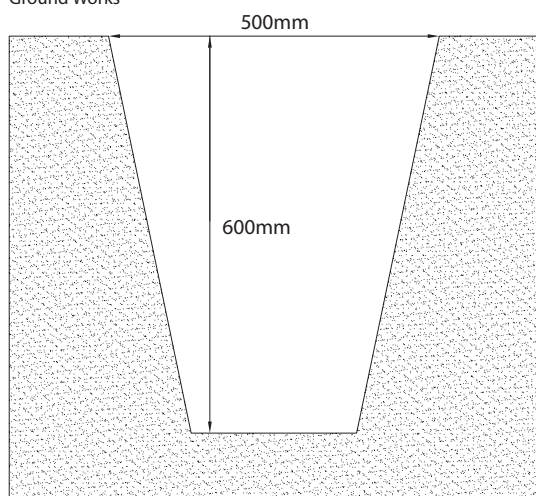
GROUND MOUNT INSTALLATION

⚠ Important

- The ground mount **must** be supported beneath the edge of the top rim by at least 150mm of hard material (e.g. concrete).
- Adequate drainage **must** be provided, failure to do so will **void the warranty**.
- To test the drainage of the ground mount, ensure that it drains at **least** as fast as it fills up.
- The ground mount **must not** be installed in such a way that the luminaire is recessed and can become submerged.
- The ground mount **must not** be installed in such a way that the fixture could become a trip hazard.
- Installations on soft or marshy ground should have reinforcement bars beneath the underside of the ground mount and have adequate drainage.

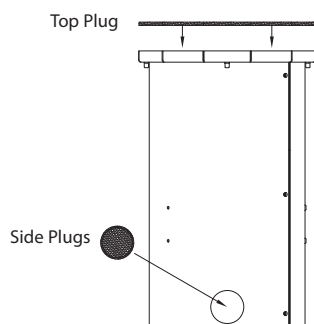
1. PREPARATION

Ground Works



The hole for the ground mount should be 600mm deep to allow for at least 200mm of hard surface or drainage material underneath the ground mount. The hole should be 500mm wide at the opening.

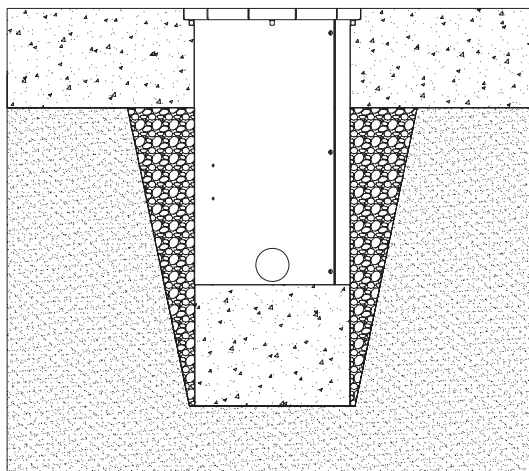
Ground works sealing plugs



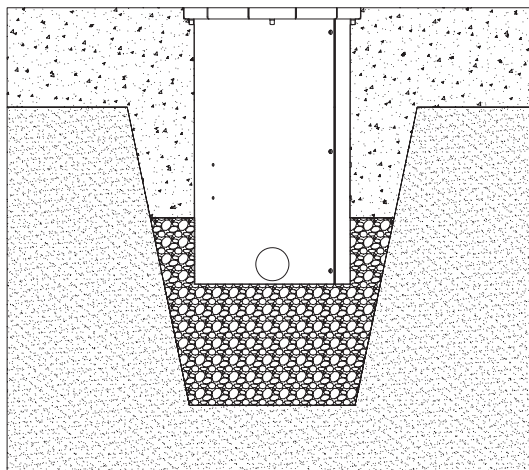
Fit the ground works sealing plugs included with the kit into the top opening and lower cable entry points to provide a temporary seal from wet concrete and drainage material entering the ground mount vessel.

2. DRAINAGE & STABILITY

Mounting Examples



Example 1. The ground mount is seated on a hard concrete base, and the sides are filled with drainage material. Concrete is used to fill to a level flush with the top of the ground mount.



Example 2. The bottom of the ground mount is seated on drainage material, and held in place with concrete to a level flush with the top of the ground mount.



Soil - Clay



Drainage Material

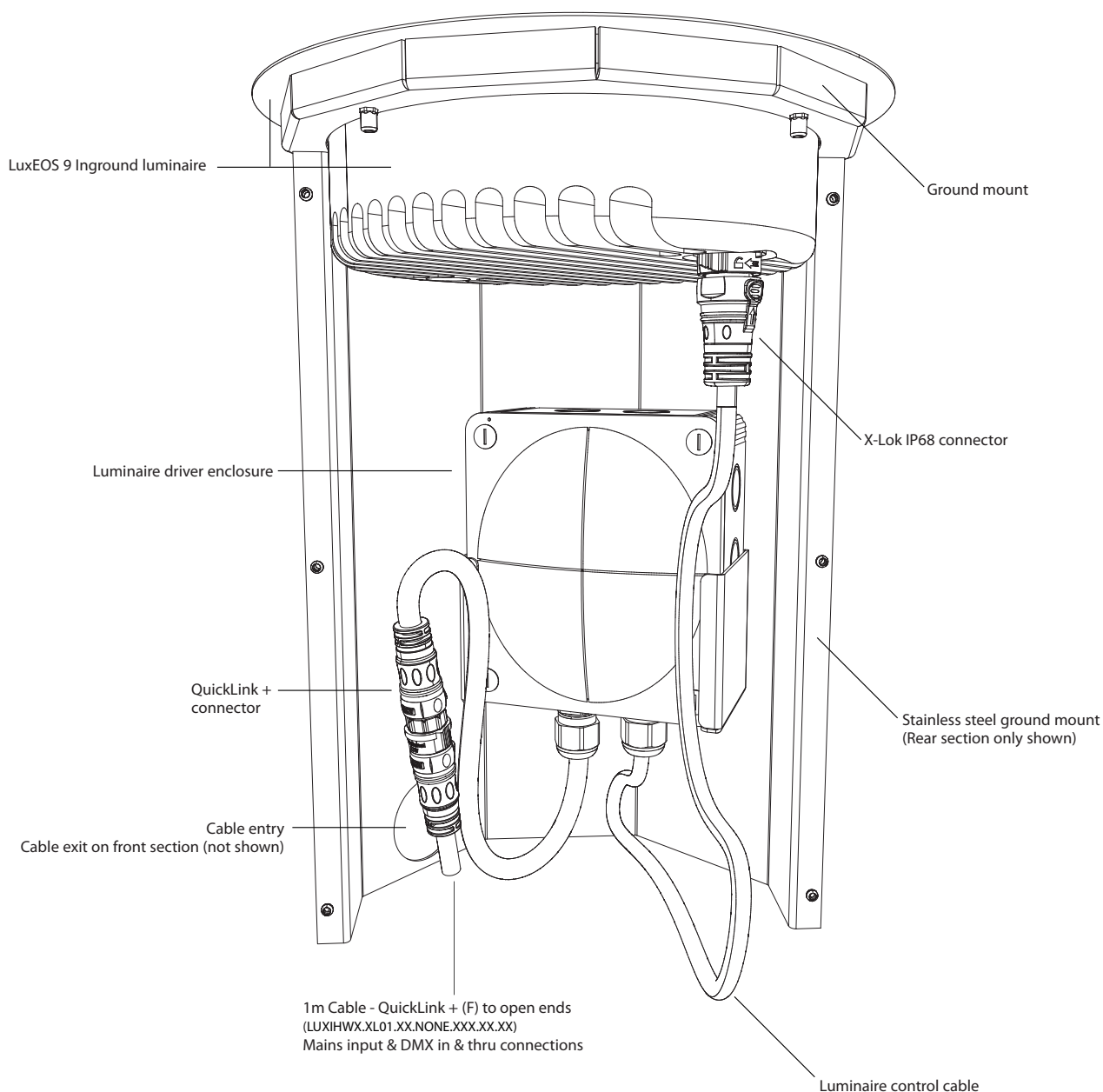


Concrete

LuxEOS 9 Inground VIVID COLOUR & TUNABLE WHITE LED INGROUND FLOOD FOR ARCHITECTURAL LIGHTING

LUMINAIRE - DRIVER - GROUND MOUNT

Installed - Luminaire , Driver & Ground Mount
(Cutaway view - Front inground panel omitted for clarity)



⚠ Important

1m Cable - QuickLink + (F) to open ends (LUXIHWX.XL01.XX.NONE.XXX.XX.XX)
This must be wired into a suitable potted IP68 connection box, taking care to separate the mains voltage and low voltage signal cables.
The ground mount chassis should be separately electrically earthed to ground

LuxEOS 9 Inground VIVID COLOUR & TUNABLE WHITE

LED INGROUND FLOOD FOR ARCHITECTURAL LIGHTING

ADDITIONAL INFORMATION

Product Weight

LuxEOS 9 Inground Ground Mount 4.5kgs

Warranty

Five years from the date of original purchase.

The warranty covers defects in manufacturing workmanship and materials. It is limited to parts and labour.

The warranty becomes void if the product is :-

- A Misused.
- B Not used in accordance with the instructions.
- C The cable connections are not made according to our instructions if the unit is used in damp or wet environments.
- D Repairs are made by unauthorised persons.
- E The serial number label has been removed or defaced.

Pulsar's maximum liability shall not exceed the price paid for the product.

In the unlikely event of a fault occurring, do not use without repair, return the product, with a description of the fault, to your supplier or direct to Pulsar for immediate attention. Full warranty details are available on request or from our website at www.pulsarlight.com.

As part of our commitment to continuous improvement PULSAR may change the specifications of its products without prior notification or public announcement.

All descriptions, illustrations, drawings and specifications in this publication present only general particulars and shall not form part of any contract.

Please visit our website for the most up to date information.