



Katana urban system

Modular, customisable large area
LED lighting solution

Think powerful can't be stylish?

think
again

Large area lighting. Re-imagined.

For large area, high output illumination without the need to compromise on design. The Katana lighting system offers today's creative designer the ultimate in flexibility, form and function.

Customisable to your specific project requirements, with a powerful lumen package of up to 88,000 lumens and innovative optical control. Katana is a design-led, modular lighting solution like no other.

Katana. The only large area lighting system you'll need.

From 5200lm to 88000lm

Key advantages:

- Modular and customisable design
- High lumen output
- 24 flexible optical solutions
- With Diamond+ technology for the ultimate in precise lighting control
- Impressive energy efficiency
- Range of control options
- Smart City ready

Applications:



Discrete decorative road lighting



Large public areas / squares / Pedestrianised areas / Public Realm



Car park lighting



Public transport concourses

Case Study

London Blackfriars

In the heart of the City of London, a stone's throw from tourist destinations such as St Paul's Cathedral and Tate Modern, Blackfriars Station and the surrounding roads recently underwent major redevelopment. With stone and glass facades now used extensively, TfL required a product complementary to the new modern aesthetic.

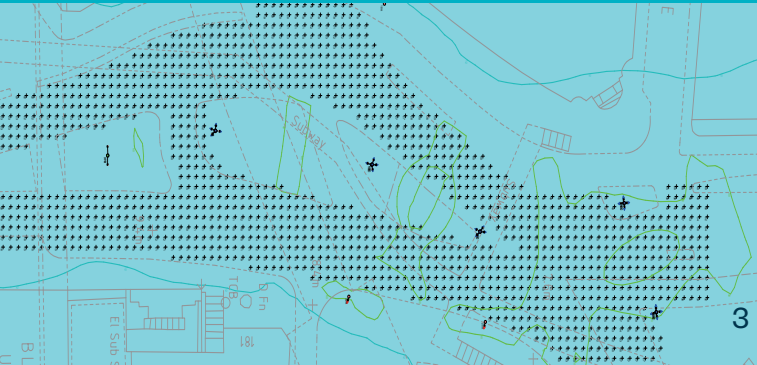
The 2 module version of our Katana urban Post Top provided both the required lighting performance and sympathetic design alongside an impressive energy saving of 57%.

Example scheme lighting requirements

Target Lighting Class	CE1
Minimum Maintained Average Lighting Level	30 Lux
Minimum Maintained Overall Uniformity	0.4

Project Description

	Original Scheme	New Scheme
Light Source	4 x 140W Cosmopolis	Katana Post Top 2 modules 4k 650mA
Total Product Circuit Watts (W)	608	264
Total Luminous Flux (lm)	66,000	32,000
Achieved Minimum Average	39.75 Lux (over lit, 90W didn't meet 30 Lux min.)	30.53 Lux (meets standard)
Minimum Maintained Average	0.39	0.46 (huge increase in average)
Weight (kg)	65	38
Qty Lanterns	7	7
Total Energy (W)	4,256	1,848
		Energy saving of 57%



Standard options

Katana Post Top

For mounting at 8-20 metres

Options

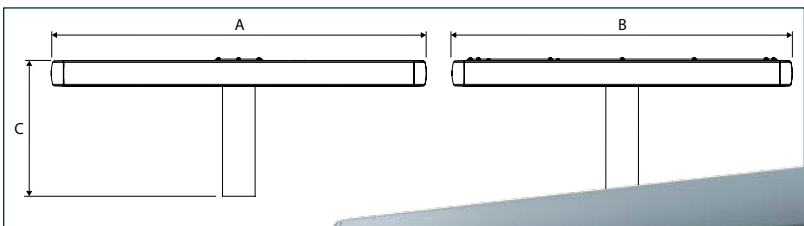
- 2 modules: up to 44000lm (396W)
- 4 modules: up to 88000lm (792W)

Suggested applications:

- Car park lighting
- Large road lighting / junction lighting



Katana Post Top	Dimensions (mm)			Weight (kg)	Windage (m²)
	A	B	C		
2 MODULES	620	928	374	38	0.08
4 MODULES	1023	928	374	56	0.1



Katana Direct Post

For mounting at 8-15 metres

Options

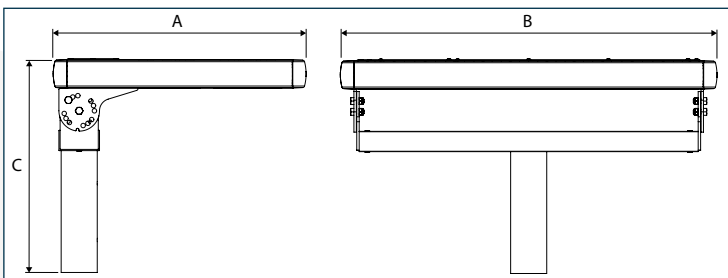
- 2 modules: up to 44000lm (396W)
- 3 modules: up to 66000lm (594W)

Suggested applications:

- Perimeter lighting of car parks
- High level road lighting
- Large public spaces



Katana Direct Post	Dimensions (mm)			Weight (kg)	Windage (m²)
	A	B	C		
2 MODULES	623	928	526	44	0.08
3 MODULES	823	928	526	49	0.09



Katana Wall Mount

For mounting at 6-10 metres

Options

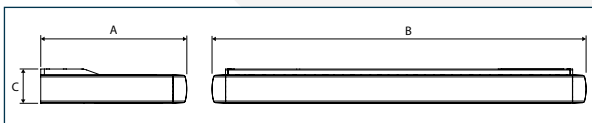
- 1 module: up to 22,000lm (198W)
- 2 modules: up to 44,000lm (396W)

Suggested applications:

- Perimeter lighting of car parks
- Discrete wall mounted area and road lighting



Katana Wall Mount	Dimensions (mm)			Weight (kg)
	A	B	C	
1 MODULE	362	928	85	23
2 MODULES	564	928	85	34



Introducing Diamond+

With 24 standard optical distributions for ultimate flexibility and precise lighting control

An evolution of our award-winning and patented Diamond Optic® reflector technology, Diamond+ gives you the ability to create widely different lighting distributions from a single luminaire.

Choose Diamond+ for refined lighting distribution

Diamond+ A Optic



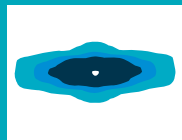
Options:

A1, A2, A3, A4 or A5

Typical applications:

Wide roads and dual carriageways (M classes)

Diamond+ B Optic



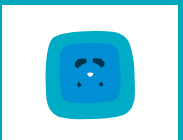
Options:

B1, B2, B3, B4 or B5

Typical applications:

Narrow roads and footpaths

Diamond+ C Optic



Options:

C1, C2, C3, C4 or C5

Typical applications:

Area applications

Diamond+ D Optic



Options:

D1, D2, D3, D4 or D5

Typical applications:

Standard roads and wide footpaths

Diamond+ F Optic



Options:

F1

Typical applications:

Perimeter lighting and car parks

Please refer to [dwwindsor.com/katana](https://www.dwwindsor.com/katana) for full optical configurations

Optical accessories

Obtrusive light shields for zero upward light

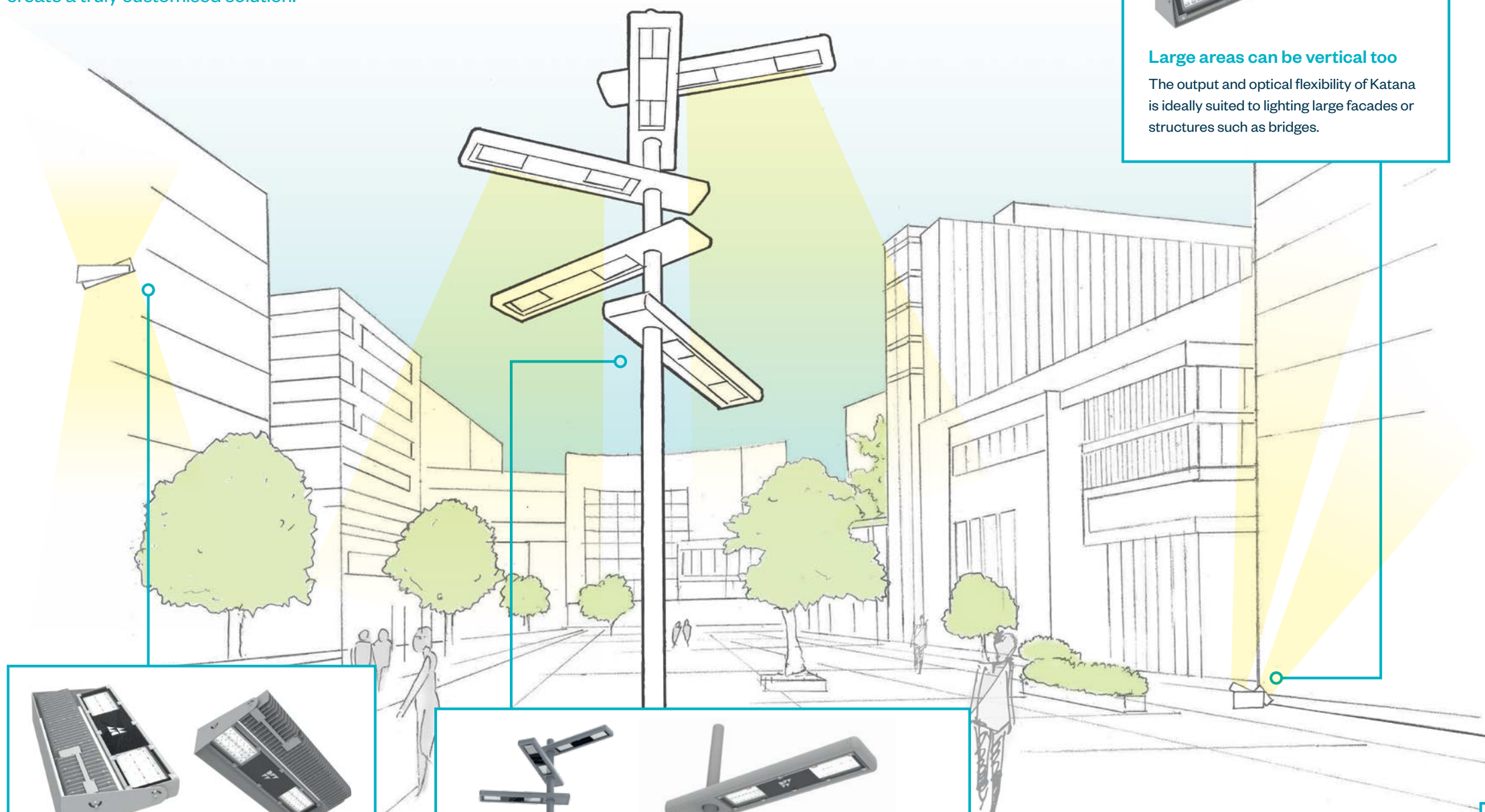




Create your perfect lighting solution

We believe that each project is unique so why shouldn't the products you use be?

The Katana system has been designed with several standard configurations but, for times that call for something more bespoke, Katana Urban gives you the power to create a truly customised solution.



Multi-functional light

Pavement space is at a premium in packed retail spaces such as Oxford Street and Regent Street in London. If reducing street clutter and enhancing architectural features is a consideration, wall mounting Katana means there is no need for street lighting columns. Katana can be used to provide horizontal illumination on to pavements and roads, while multi-directional modules uplight a wall.



Lighting designed with people in mind

Simply customise the standard Katana options available or create your own bespoke statement. Consider integrating CCTV or sensors to reduce street clutter.



Large areas can be vertical too

The output and optical flexibility of Katana is ideally suited to lighting large facades or structures such as bridges.

Linear solutions

Used in linear formation, Katana is equally suited to internal applications such as concourses and passenger halls.



Lighting for large areas

For areas that need a lot of light, such as multi-use commercial spaces. Consider a bespoke 4 module Katana to put light where needed.



Whatever the application, Katana can provide an ideal lighting solution. With a wide range of possibilities Katana will transform the way you light.

For more functional arrangements please see our Katana industrial system brochure or visit dw Windsor.com/katana

Katana Module – Specification

IP66 | IK09 | CLASS I | CLASS II

Features

Highly efficient, configurable lighting solution

Flexible range of outputs and lighting distributions

Ability to combine different distributions in a single module for ultimate optical flexibility

Flexible mounting options

High efficacy

Fully controllable

Optical control

Diamond+ (see page 5)

Obtrusive light shield(s)/hood

Optional diffuse glazing (on special request)

Light source

LEDs: Luxeon TX

Number of LEDs: 64

L90 lifetime prediction

In excess of 100,000 hours (all variants)

Colour temperature

2700K (very warm white)

3000K (warm white)

4000K (neutral white)

Colour rendering index

70Ra (3000 / 4000K)

80Ra (2700 / 3000K)

Luminaire efficacy

Up to 130lm/W (total measured luminaire efficacy)

Drive Current

From 200mA – 1000mA (in 50mA increments)

Gear, switching and control

LED Driver: Philips Xi Lite / Fully programmable

Switch: On/off through conventional PEC or NEMA photocell

Dim: Factory set dimmed / customer specified dimming

CMS: Compatible with all available CMS systems

Surge protection

10kV as standard

Colours

RAL 9005 Black

RAL 7046 Mid Grey

RAL 7035 Light Grey

Other RAL colours on special request

Materials

Body: High pressure die cast aluminium

Glazing: Toughened glass

Seals: Silicone

Finish: Fine texture polyester powder coat

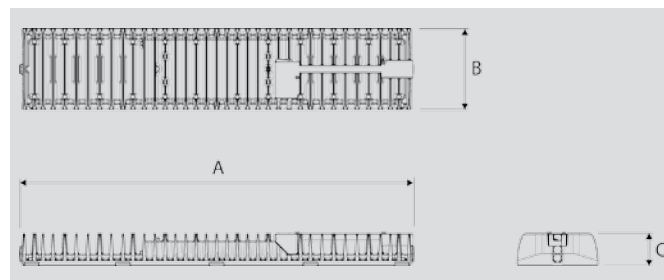
Installation and maintenance

Each module individually adjustable (5° increments)

Operational temperature range: -45° to +50°C

Modules supplied pre-cabled to suit application

For luminaire weight and windage please see pages 4 and 5



	Dimensions (mm)			Weight (kg)
	A	B	C	
SINGLE MODULE	860	176	70.5	10

Katana® is a registered design

Due to continuous product development the details within this brochure are subject to change at any time, please contact us for the most up-to-date information or visit: www.dwwindsor.com

DW Windsor

Pindar Road, Hoddesdon, Hertfordshire, EN11 ODX
T: +44 (0) 1992 474600 | E: info@dwwindsor.com
dwwindsor.com



July 2017