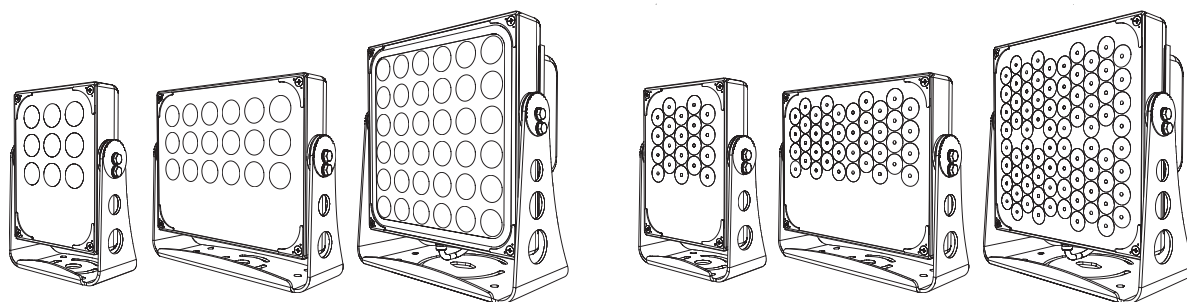


LuxEOS Flood 9 - 18 - 36 - Beam 20 - 40 - 80

LED LUMINAIRES FOR ARCHITECTURAL LIGHTING



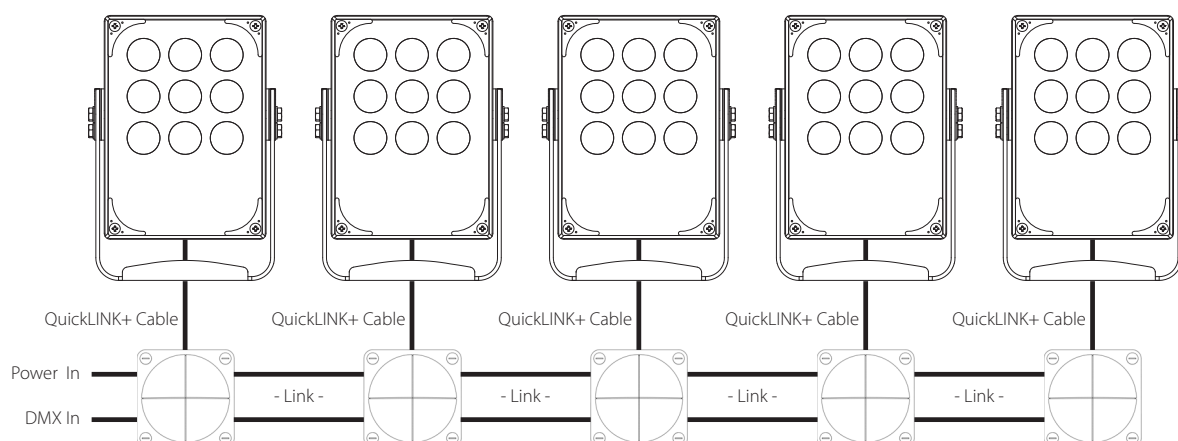
Warning

- LuxEOS luminaires must be installed by a qualified electrician.
- Installation must be carried out in accordance with local and/or national electrical installation codes of practice.
- Isolate the mains supply to the driver during installation and whenever subsequently disconnecting or reconnecting the fitting to avoid electric shock.
- Use the correct polarity when wiring, if in any doubt please contact Pulsar.
- Pulsar luminaires are designed for lighting applications and must not be used for any other purpose.
- Unless authorised by Pulsar, field repairs of the luminaire will void the warranty.

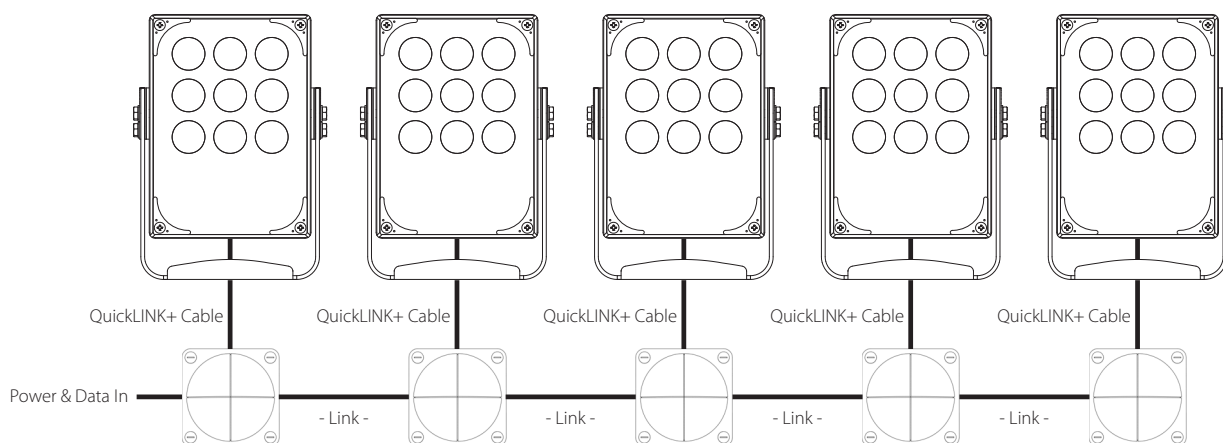
MAINS & DATA CONNECTIONS

Typical Connections (Luxeos 9 shown)

LuxCONNECT IP66 Hardwired connection boxes with **separate** Power & DMX wiring & QuickLINK+ luminaire connections



LuxCONNECT IP66 Hardwired connection boxes with **combined** Power & DMX wiring & QuickLINK+ luminaire connections

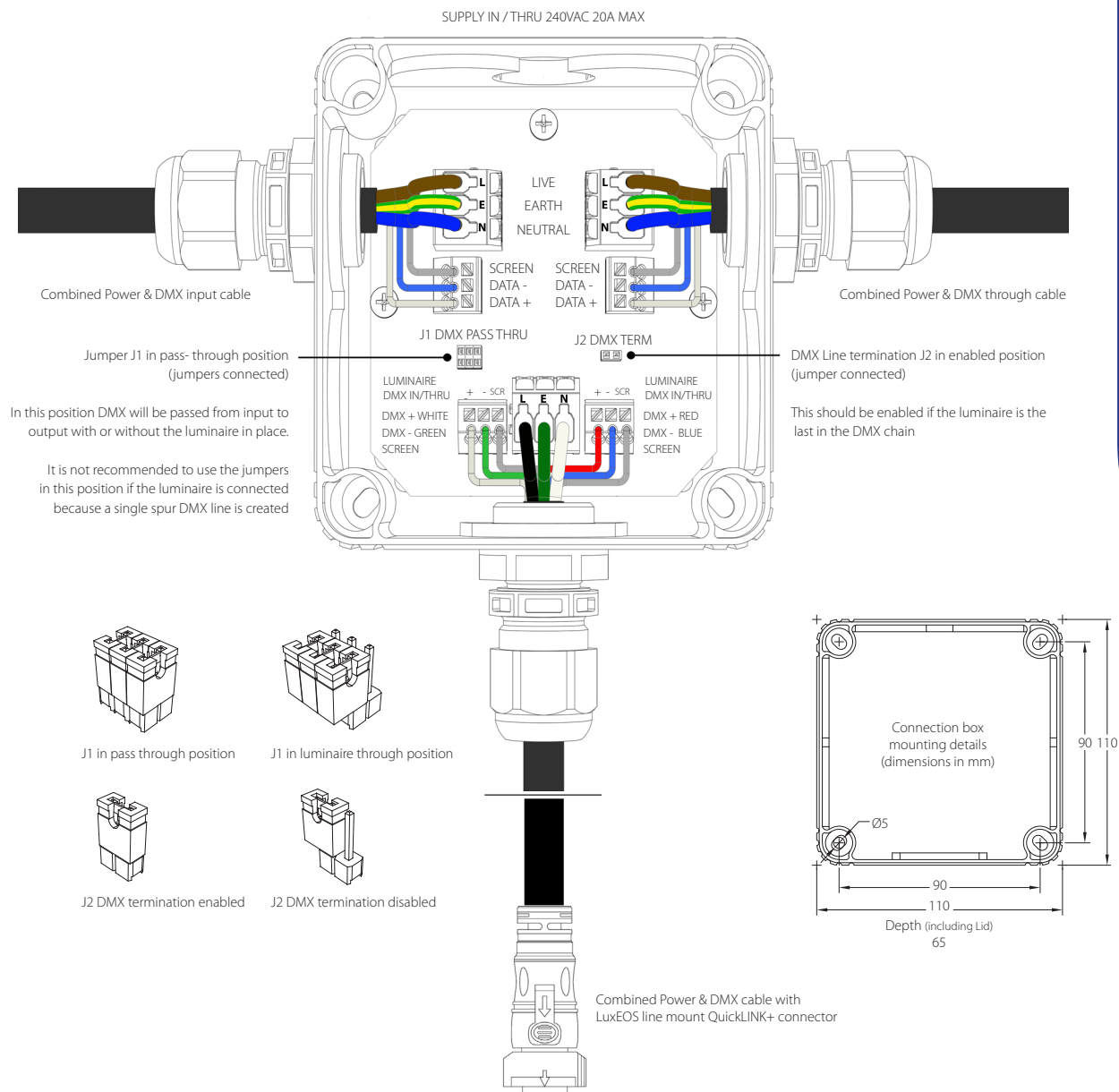


LuxEOS Flood 9 - 18 - 36 - Beam 20 - 40 - 80

LED LUMINAIRES FOR ARCHITECTURAL LIGHTING

WIRING DETAILS

LuxCONNECT IP66 Hardwired connection enclosure with **combined** Power & DMX input & QuickLINK+ luminaire connection



Power

The power cable should be no greater than 4mm² and can be either stranded or solid cores. The maximum current of each cable run should be no greater than 20A continuous. Before fitting the power cable, each cable end should be stripped to between 9 and 11mm before inserting into the connectors. Ensure connections are made in accordance to the markings on the PCB, failure to do so may result in damage to the luminaire.

DMX

Before fitting the DMX cable, each cable end should be stripped to between 8.5 and 9.5mm before inserting into the connector. Ensure connections are made in accordance to the markings on the PCB, failure to do so may result in incorrect operation or damage to the luminaire. IMPORTANT: If the insulation rating of the DMX cable is less than the supply voltage then additional protective sleeving should be fitted.

DMX Passthrough

When commissioning the installation before the luminaires are connected, or if a luminaire has been removed, the DMX signal can be passed through by repositioning the jumpers (J1) as indicated within the install box.

LuxEOS Flood 9 - 18 - 36 - Beam 20 - 40 - 80

LED LUMINAIRES FOR ARCHITECTURAL LIGHTING

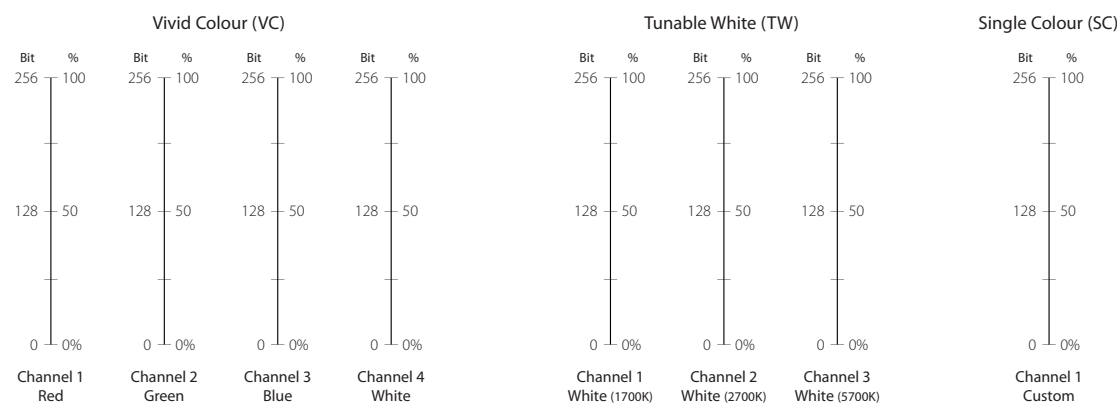
CONTROL

LuxEOS luminaires support DMX512, DMX512:1990, (R2013), ANSI E1.20 – 2010 (DMX with RDM V1.0)

All DMX512 protocols are supported including E1.11 DMX with RDM.

Other protocols may be supported with future software releases or hardware add-ons.

DMX Channel order



Start addresses are configured externally via RDM over DMX

RDM

The following RDM Parameter I.D'S (PIDS) are supported

Discovery:	0001 – Discovery_Branch_Unique 0002 – Discovery_Mute 0003 – Discovery_Un_mute
Status:	0020 – Queued_Messages 0030 – Status_Messages 0031 – Status_ID_Description
RDM Information:	0050 – Supported_Parameters
Product Information:	0060 – Device_Info 0070 – Product_Detail_ID_List 0080 – Device_Model_Description 0081 – Manufacturer_Label 0082 – Device_Label (Supporting 32 characters of user text) 00C0 – Software_Version_Label
DMX512 Setup:	00E0 – DMX_Personality 00E1 – DMX_Personality_Description 00F0 – DMX_Start_Address 0120 – Slot_Info 0121 – Slot_Description
Sensors:	0200 – Sensor_Definition 0201 – Sensor_Value
Power/Lamp Settings:	0400 – Device_Hours
Control:	1000 – Identify_Device

LuxEOS Flood 9 - 18 - 36 - Beam 20 - 40 - 80

LED LUMINAIRES FOR ARCHITECTURAL LIGHTING

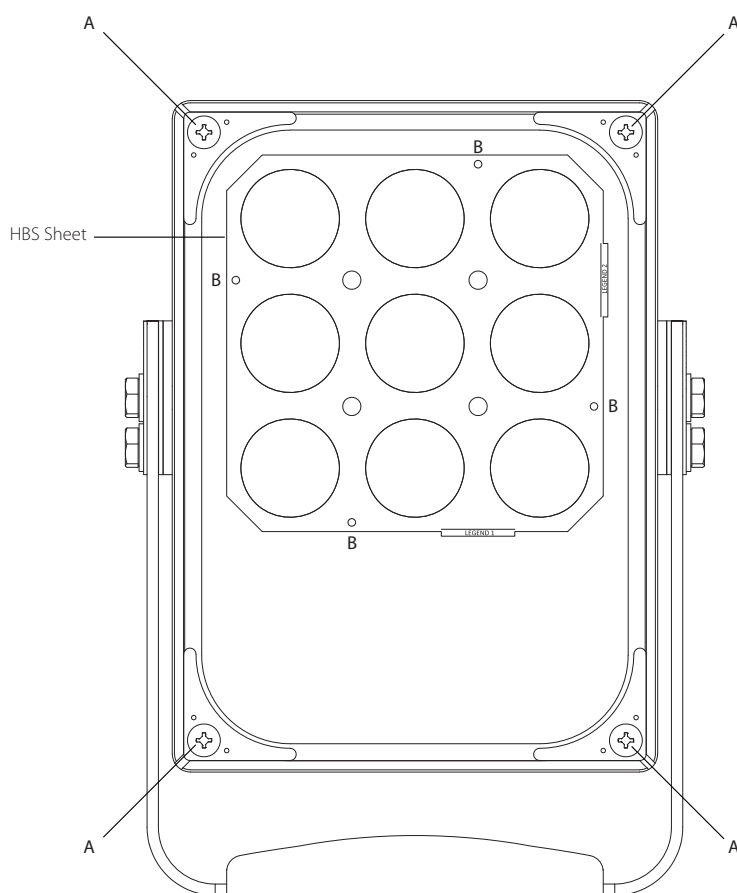
OPTICAL CONTROL - BEAM SHAPING

HBS Beam Shaping

LuxEOS fixtures are fitted with native 3° or 10° lenses. To achieve wider beam angles HBS (Holographic Beam Shaper) film sheets are fitted when manufactured. It is possible to change the HBS film sheets to adjust the beam angle. Standard upgrade kits are available in 20°, 40°, 80°, 10°x60° and 60°x10° deg. HBS sheets are a standard size, the quantities required vary depending on the fixture size, i.e a LuxEOS 9 requires 1 sheet, LuxEOS 18, 2 sheets & LuxEOS 36, 4 sheets

Changing the HBS

- Position the luminaire on its back with the glass facing in an upward direction
- Remove the 4 hex bolts (A) that secure the glass mounting brackets, and remove the brackets
- Carefully remove the front glass taking care to not damage the rubber seal
- Locate the HBS fixing holes (B) as detailed below and if fitted, remove the existing HBS film by lifting out the 4 small plastic pins
- Install the new HBS sheet with the reflective side facing down towards the lenses / rough face facing up towards the front glass and replace the 4 plastic pins
- Please Note - if the HBS replacement sheets are installed the wrong way around, the beam angle will not change and light output will be significantly reduced
- Replace the rubber seal into the groove in the main body of the luminaire
- Refit the front glass ensuring that the rubber seal is still located into the groove
- Replace and refit the corner bracket and retighten the screws (B) evenly in sequence.



LuxEOS Flood 9 Shown

LuxEOS Flood 9 - 18 - 36 - Beam 20 - 40 - 80

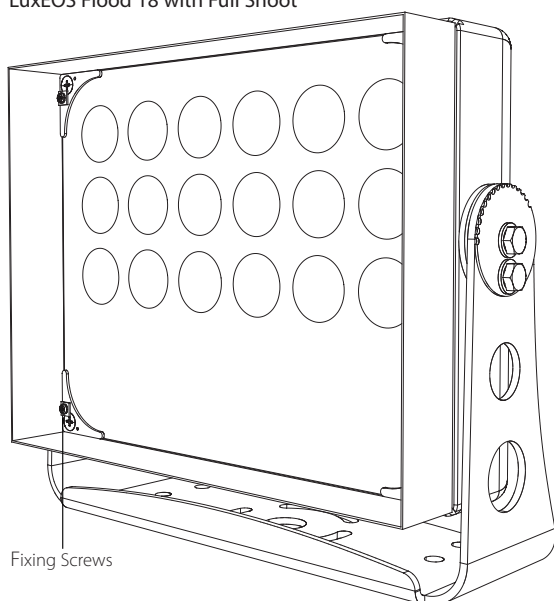
LED LUMINAIRES FOR ARCHITECTURAL LIGHTING

OPTICAL CONTROL - SNOOTS & LOUVRES

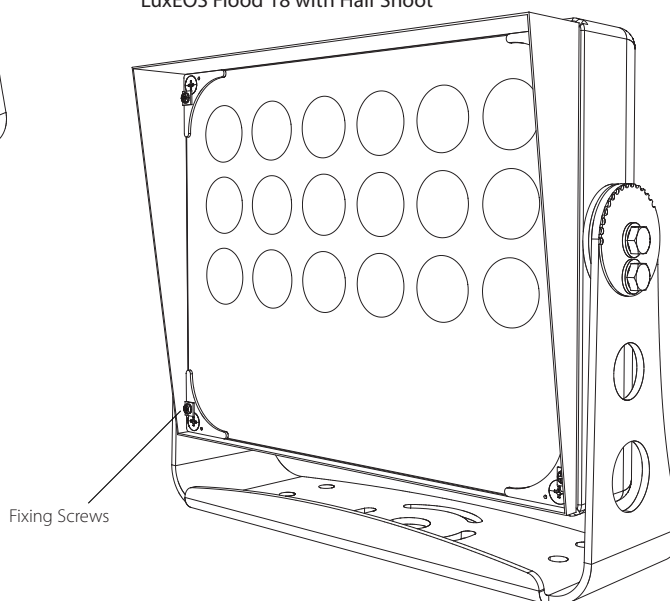
Attachments for Glare

3 Attachments are available to reduce light glare from LuxEOS luminaires, these being a 50mm Snoot, Half Snoot and Louvre. Each attachment is fitted with the supplied M4 fixing screws as shown below.

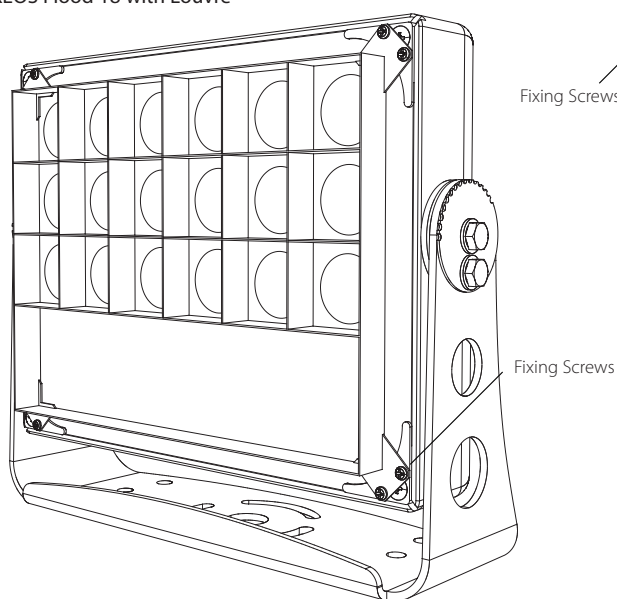
LuxEOS Flood 18 with Full Snoot



LuxEOS Flood 18 with Half Snoot



LuxEOS Flood 18 with Louvre

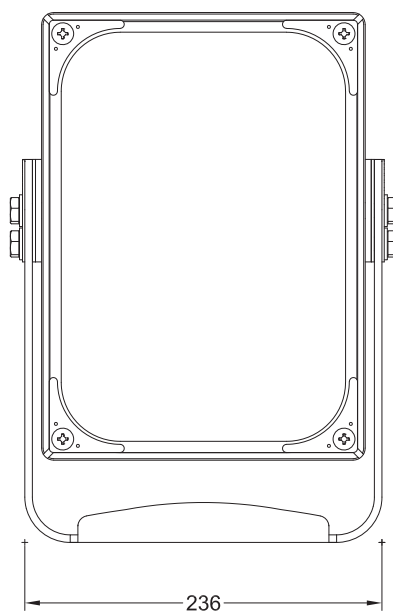


LuxEOS Flood 9 - 18 - 36 - Beam 20 - 40 - 80

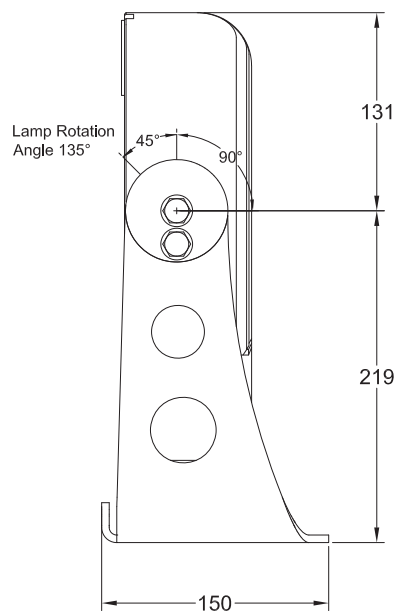
LED LUMINAIRES FOR ARCHITECTURAL LIGHTING

MECHANICAL DETAILS - LuxEOS Flood 9 & Beam 20 (All dimensions in mm)

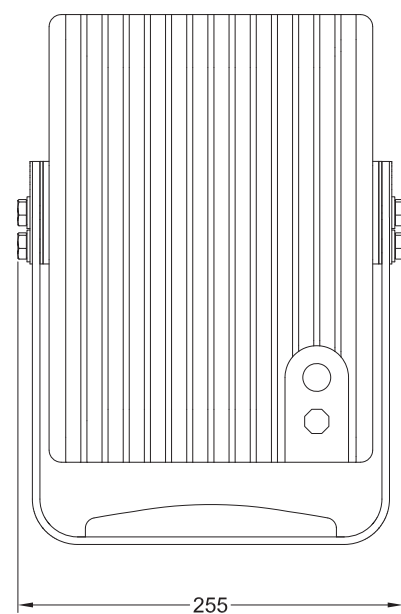
Front view



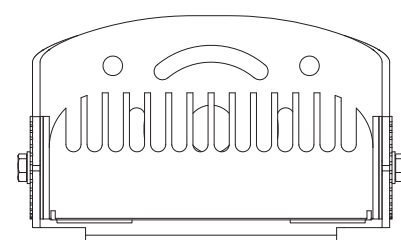
Side view



Rear view



Top view



Weights

LuxEOS Flood 9 - 7.2 kgs

LuxEOS Beam 20 - 7.3 kgs

Dimensions

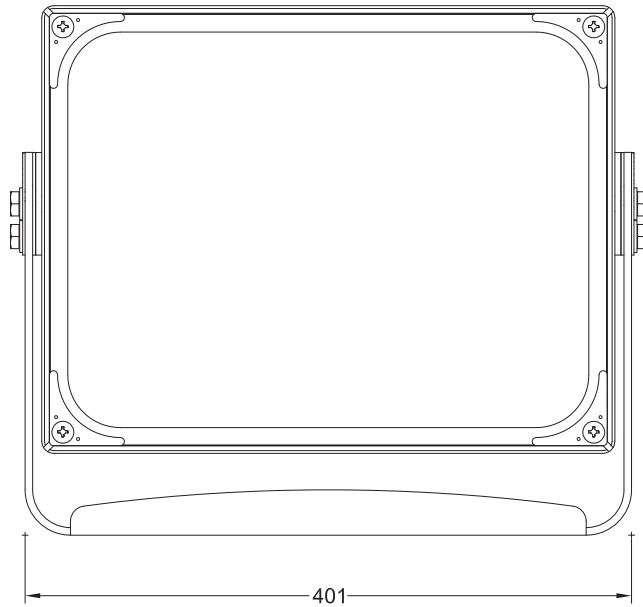
350mm (H) x 255mm (W) x 150mm (D)

LuxEOS Flood 9 - 18 - 36 - Beam 20 - 40 - 80

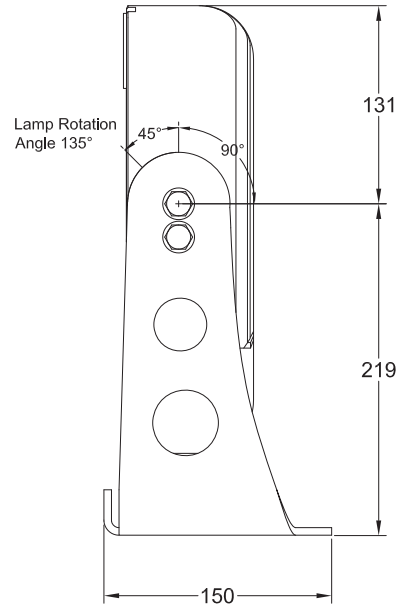
LED LUMINAIRES FOR ARCHITECTURAL LIGHTING

MECHANICAL DETAILS - LuxEOS Flood 18 & Beam 40 (All dimensions in mm)

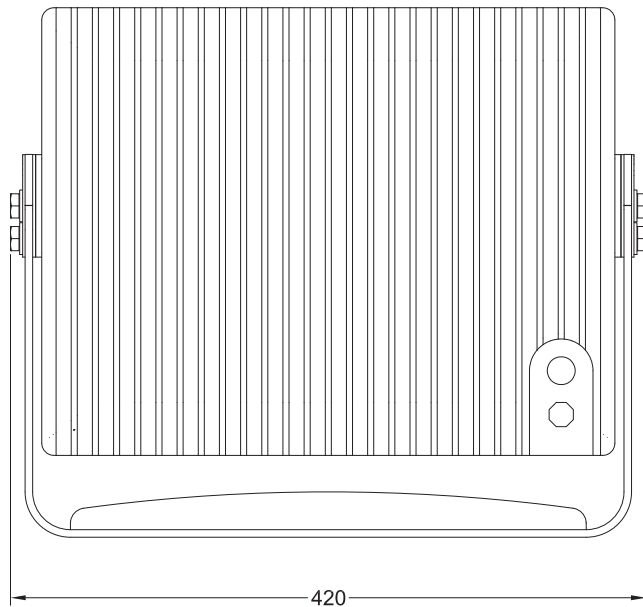
Front view



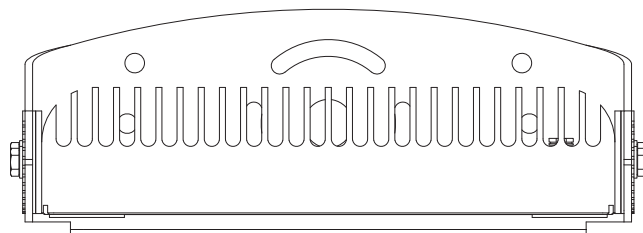
Side view



Rear view



Top view



Weights

LuxEOS Flood 18- 12 kgs

LuxEOS Beam 40 - 12.2 kgs

Dimensions

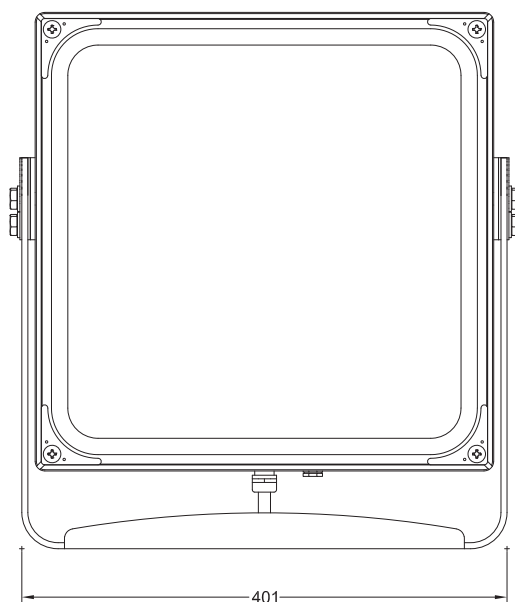
350mm (H) x 420mm (W) x 150mm (D)

LuxEOS Flood 9 - 18 - 36 - Beam 20 - 40 - 80

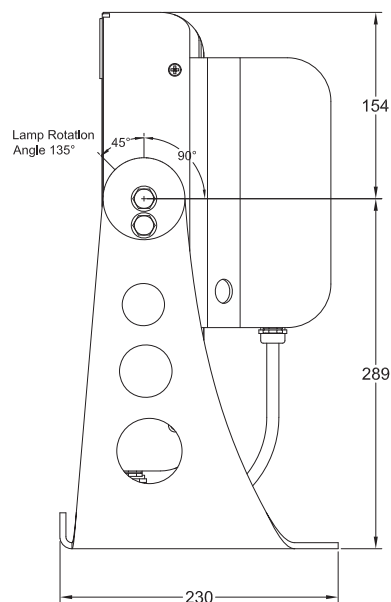
LED LUMINAIRES FOR ARCHITECTURAL LIGHTING

MECHANICAL DETAILS LuxEOS Flood 36 & Beam 80 (All dimensions in mm)

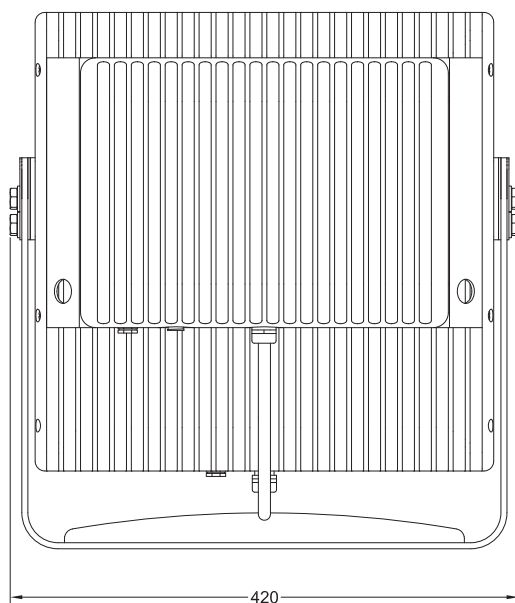
Front view



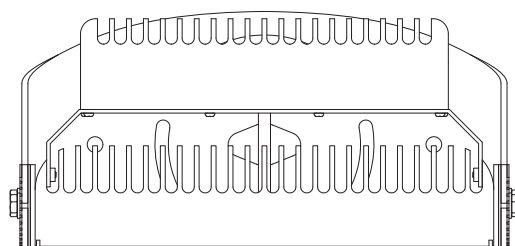
Side view



Rear view



Top view



Weights

LuxEOS Flood 36 - 23 kgs

LuxEOS Beam 80 - 23.4 kgs

Dimensions

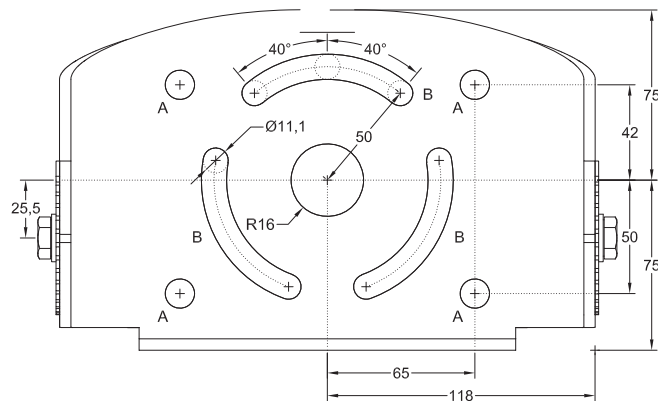
443mm (H) x 420mm (W) x 230mm (D)

LuxEOS Flood 9 - 18 - 36 - Beam 20 - 40 - 80

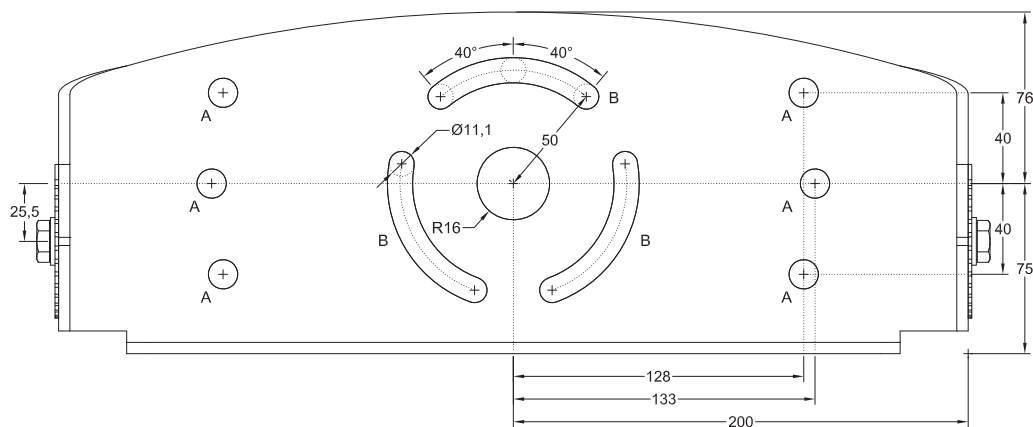
LED LUMINAIRES FOR ARCHITECTURAL LIGHTING

MECHANICAL DETAILS - YOKE BRACKETS

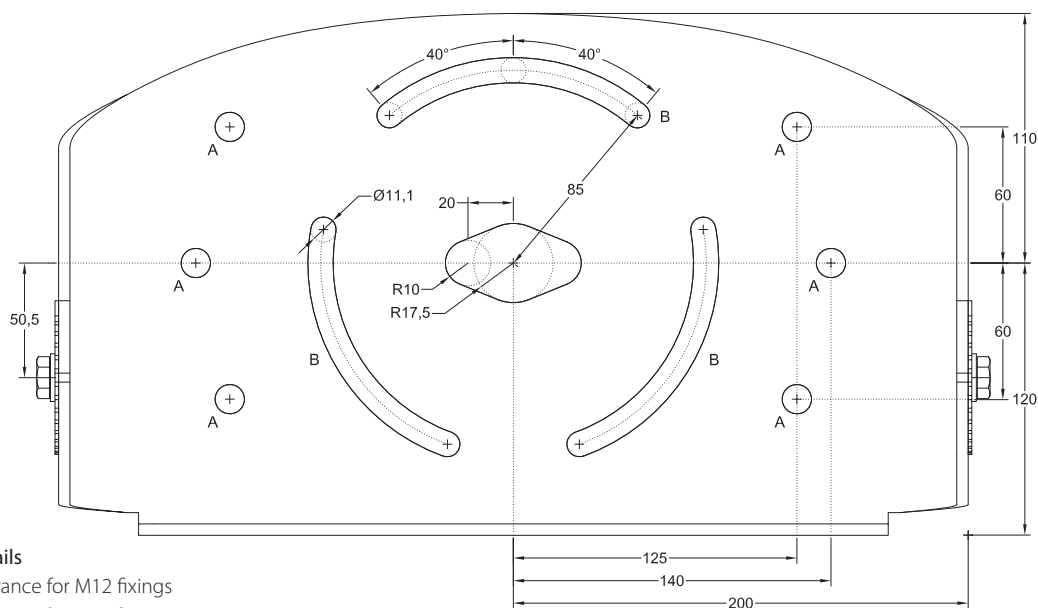
LuxEOS Flood 9 & Beam 20 Yoke Bracket



LuxEOS Flood 18 & Beam 40 Yoke Bracket



LuxEOS Flood 36 & Beam 80 Yoke Bracket



Hole details

(A) - Clearance for M12 fixings

(B) - Clearance for M10 fixings

All dimensions in mm

LuxEOS Flood 9 - 18 - 36 - Beam 20 - 40 - 80

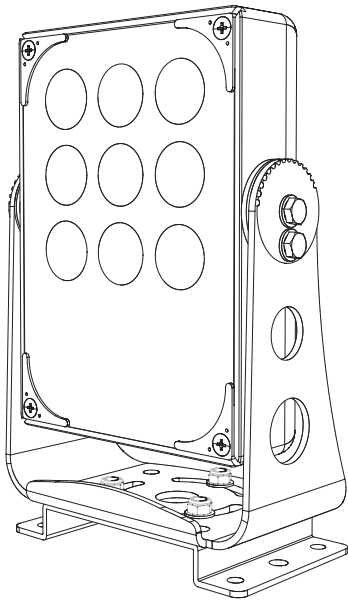
LED LUMINAIRES FOR ARCHITECTURAL LIGHTING

MECHANICAL DETAILS - OPTIONAL MOUNTING PLATES

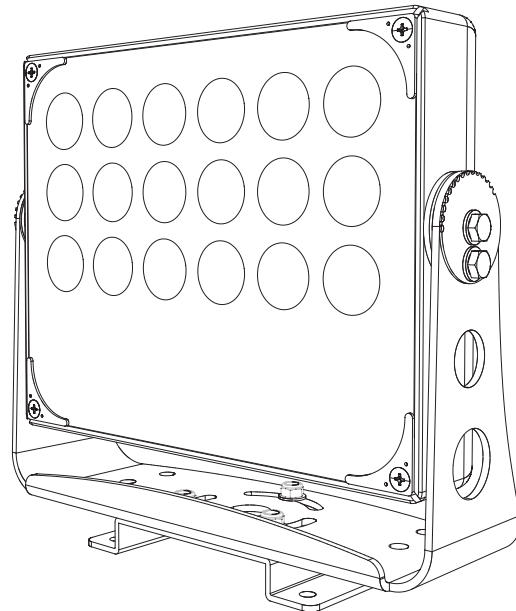
Mounting Brackets

Two optional mounting brackets are available, one to fit the LuxEOS 9 & Beam 20, LuxEOS 18 & Beam 40, and one to fit the LuxEOS 36 and Beam 80

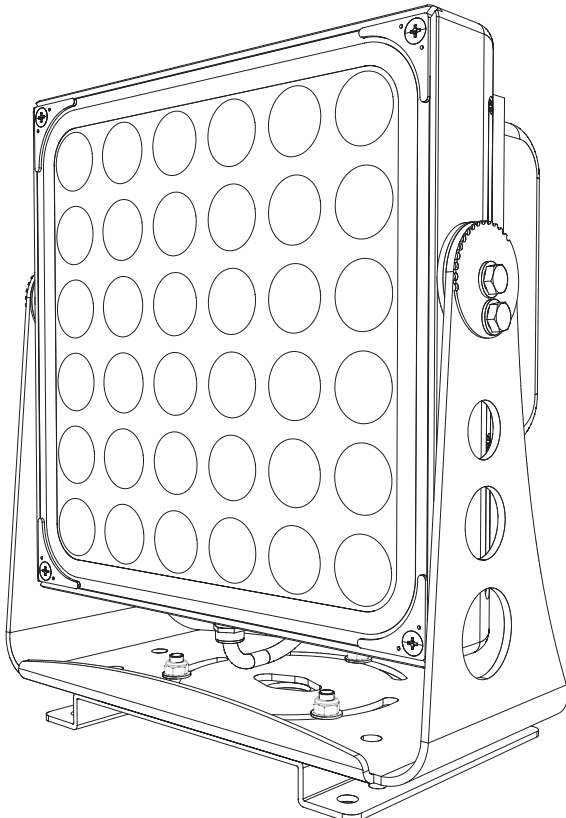
LuxEOS Flood 9 fitted with Mounting Plate



LuxEOS Flood 18 with Mounting Plate



LuxEOS Flood 36 with Mounting Plate

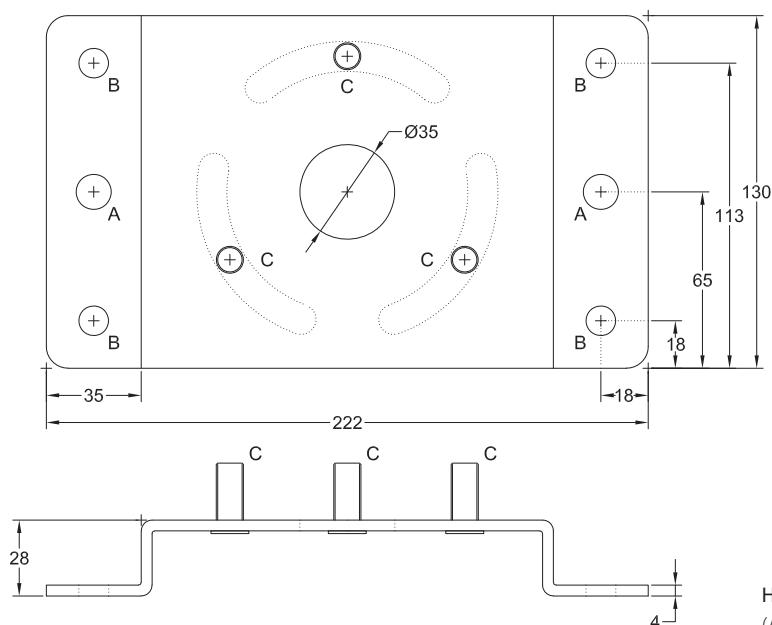


LuxEOS Flood 9 - 18 - 36 - Beam 20 - 40 - 80

LED LUMINAIRES FOR ARCHITECTURAL LIGHTING

MECHANICAL DETAILS - OPTIONAL MOUNTING PLATES

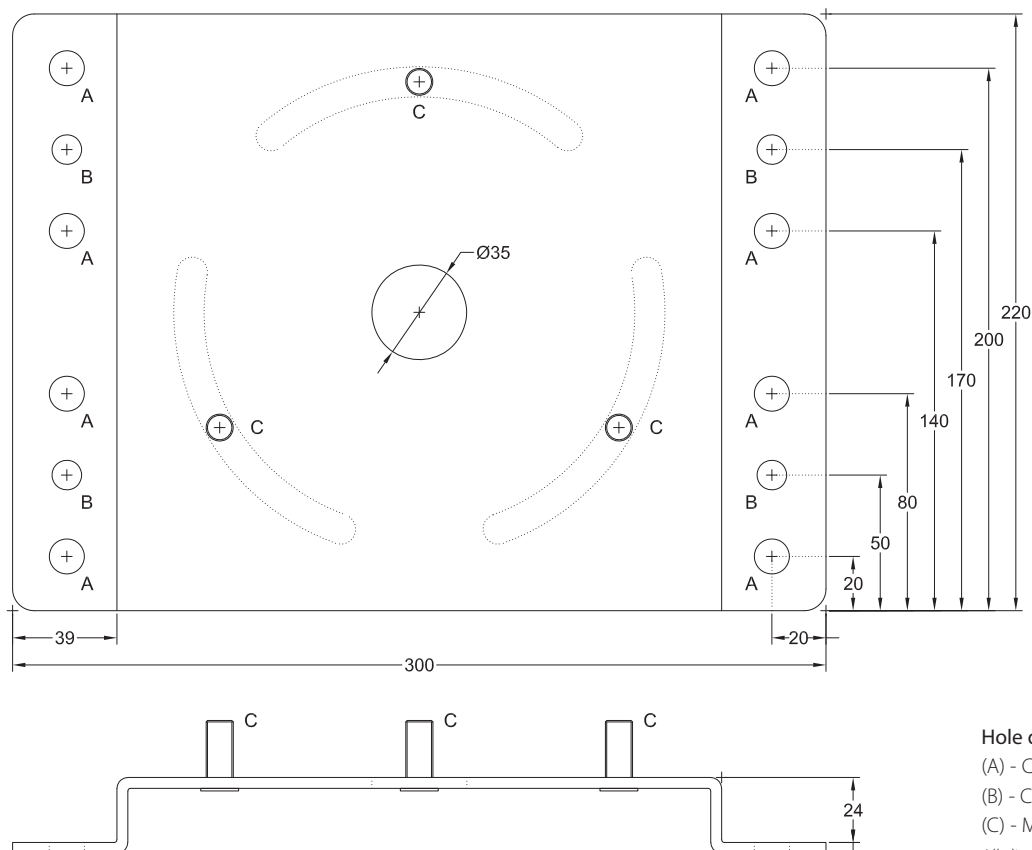
LuxEOS Flood 9 & 18, Beam 20 & 40 Mounting Plate



Hole details

- (A) - Clearance for M12 fixings
- (B) - Clearance for M10 fixings
- (C) - M10 Studs for Standard Yoke

LuxEOS Flood 36 & Beam 80 Mounting Plate



Hole details

- (A) - Clearance for M12 fixings
 - (B) - Clearance for M10 fixings
 - (C) - M10 Studs for Standard Yoke
- All dimensions in mm

LuxEOS Flood 9 - 18 - 36 - Beam 20 - 40 - 80

LED LUMINAIRES FOR ARCHITECTURAL LIGHTING

ADDITIONAL INFORMATION

Mains Supply Cable Colours (Harmonised)

Green/Yellow	Earth - Ground
Brown	Live Phase
Blue	Neutral

DMX Cable Colours (Pulsar)

White	DMX +
Blue	DMX -
Shield	Screen

QuickLINK+ Cable Colours (Power)

Green	Earth - Ground
Black	Live Phase
White	Neutral

QuickLINK+ Cable Colours (Data in)

White	DMX +
Green	DMX -
Shield	Screen

QuickLINK+ Cable Colours (Data through)

Red	DMX +
Blue	DMX -
Shield	Screen

Power Requirements

LuxEOS Flood 9	120 -277V AC @ 50/60Hz	60W
LuxEOS Flood 18	120 -277V AC @ 50/60Hz	120W
LuxEOS Flood 36	120 -277V AC @ 50/60Hz	240W
LuxEOS Beam 20	120 -277V AC @ 50/60Hz	45W
LuxEOS Beam 40	120 -277V AC @ 50/60Hz	90W
LuxEOS Beam 80	120 -277V AC @ 50/60Hz	180W

Portable Appliance Testing

LuxEOS luminaires may be safely Earth Bond and Insulation tested (500V).

Product Weights

LuxEOS Flood 9	7.2 kgs
LuxEOS Flood 18	12.0 kgs
LuxEOS Flood 36	23.0 kgs
LuxEOS Beam 20	7.3 kgs
LuxEOS Beam 40	12.2 kgs
LuxEOS Beam 80	23.4 kgs

Standards

LuxEOS luminaires comply with the following international and national harmonised standards

Electrical Safety - EN 60598, EN 60598-2-13, EN 61347

EMC - EN 55015, EN 61547

RoHS - EN 50581

Photobiological – EN 62471

WEEE - EN 50419

Protection – IP66 / IK10

Warranty

Five years from the date of original purchase.

The warranty covers defects in manufacturing workmanship and materials. It is limited to parts and labour.

The warranty becomes void if the product is :-

- A Misused.
- B Not used in accordance with the instructions.
- C The cable connections are not made according to our instructions if the unit is used in damp or wet environments.
- D Repairs are made by unauthorised persons.
- E The serial number label has been removed or defaced.

Pulsar's maximum liability shall not exceed the price paid for the product.

In the unlikely event of a fault occurring, do not use without repair, return the product, with a description of the fault, to your supplier or direct to Pulsar for immediate attention.

Full warranty details are available on request or from our website at www.pulsarlight.com.

As part our commitment to continuous improvement PULSAR may change the specifications of its products without prior notification or public announcement.

All descriptions, illustrations, drawings and specifications in this publication present only general particulars and shall not form part of any contract.

Please visit our website www.pulsarlight.com for the most up to date information.