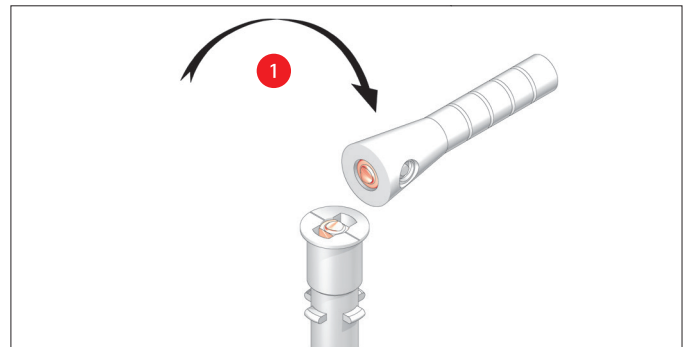


The functional principle*

Damage to the bollard

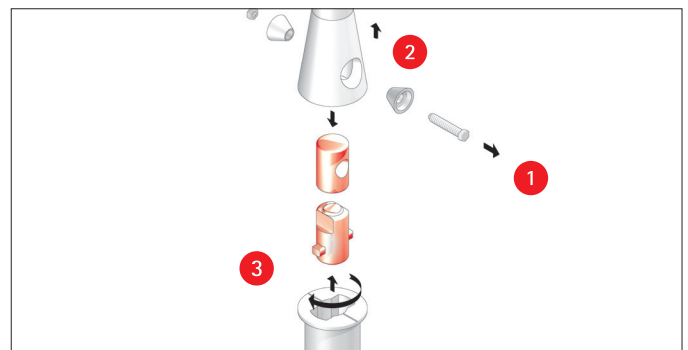
- 1 Damage caused by impact from a vehicle



The replaceable junction piece snaps at the breaking point.

Broken junction piece replacement

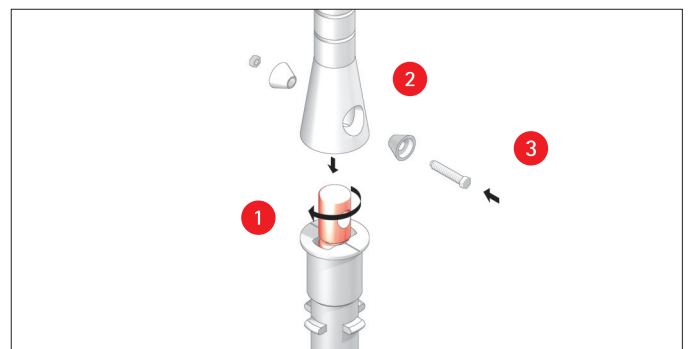
- 1 Loosen clamping bolts and remove top of junction
- 2 Turn the junction piece 90° and pull out



The broken junction piece is loosened and removed.

New junction piece insertion

- 1 Insert new junction piece and turn 90°
- 2 Set up bollard over the top of the junction
- 3 Screw in clamping bolts



The junction piece is replaced.

Bollard removal

- 1 Loosen clamping bolts, but do not unscrew them from one another completely
- 2 Turn the bollard 90° and pull it out together with clamping bolt and junction piece
- 3 Cover the ground shell



The bollard can also be temporarily removed.

*The functional principle described here for bollards, also applies to assembly and dismantling seating and waste containers fitted with the 3p-Technology.