

## LuxEOS Flood 36 VIVID COLOUR

LED FLOOD FOR ARCHITECTURAL LIGHTING



LuxEOS Flood 36 - RGBW (2700K)  
10° 20° 40° 80° 10x60° 60x10°

Tested By  
DW Windsor Group Laboratory  
Hoddesdon  
UK

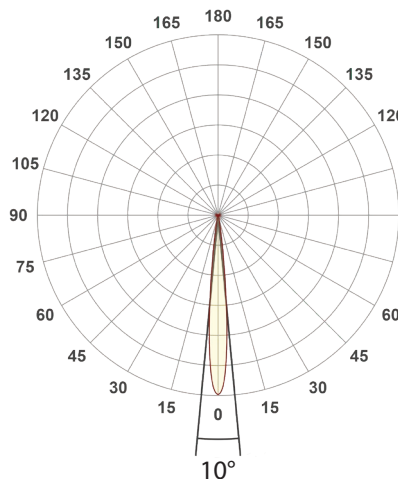
Date  
Nov 2020

Dimensions  
443mm (H) x 420mm (W) x 230mm (D) (including yoke)

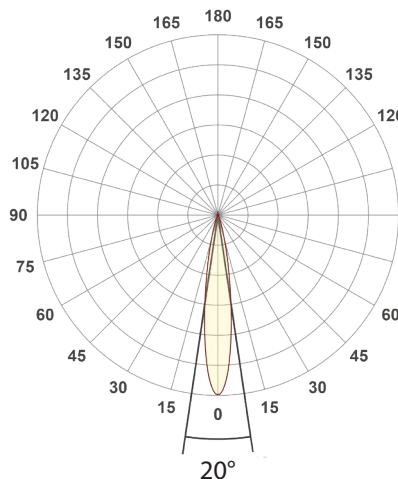
Weight  
23 kgs (50.7lbs)

### Polar Distribution

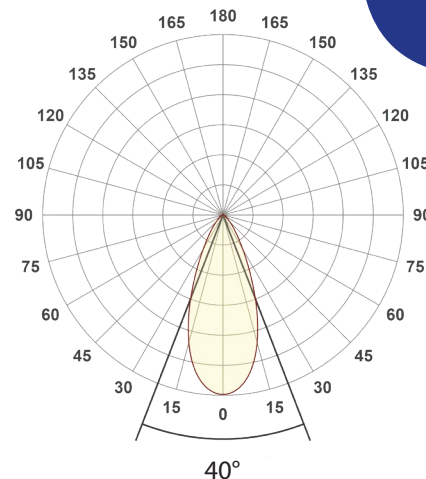
10° Conical Beam (Native)



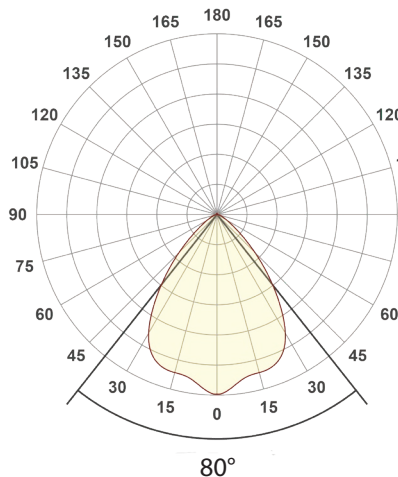
20° Conical Beam (With HBS)



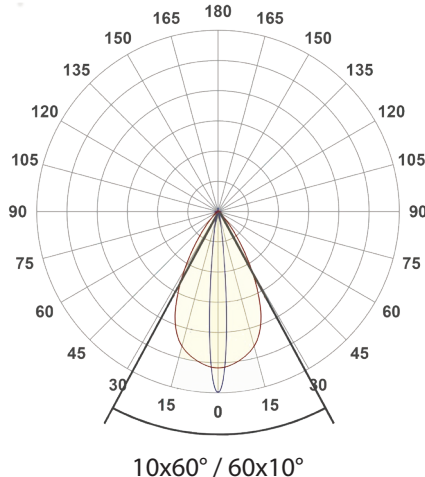
40° Conical Beam (With HBS)



80° Conical Beam (With HBS)

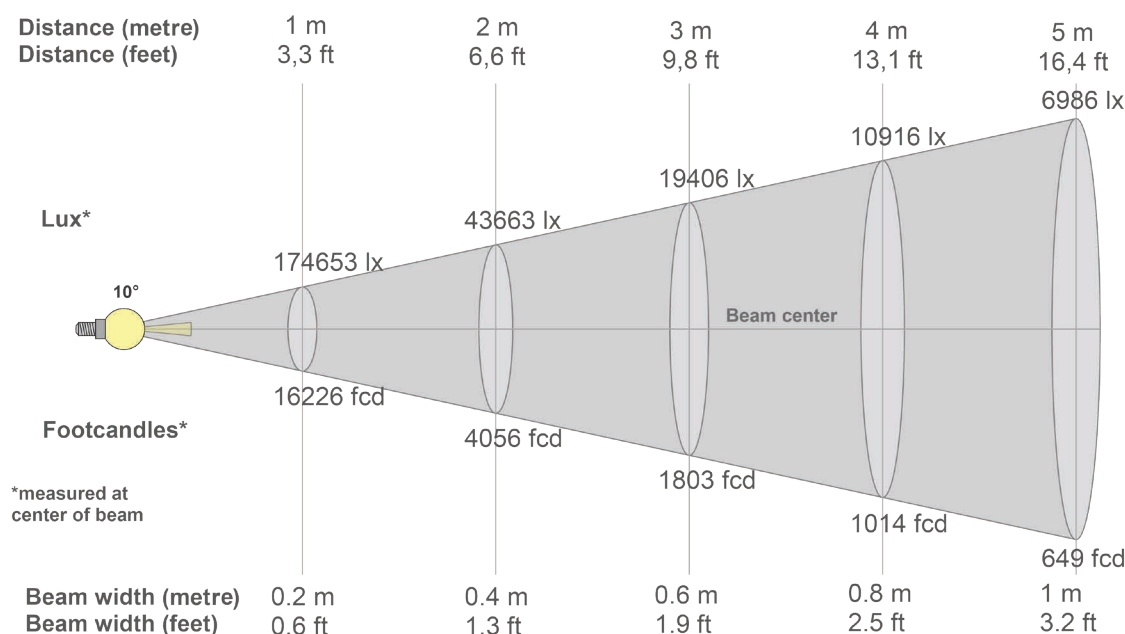


10x60° / 60x10° Elliptical Beam (With HBS)



## LuxEOS Flood 36 - RGBW (2700K)

Intensities at Distance with native 10° Optics



### Beam intensities from 1-20m

1m	2m	3m	4m	5m	6m	7m	8m	9m	10m	11m	12m	13m	14m	15m	16m	17m	18m	19m	20m
3.3ft	6.6ft	9.8ft	13.1ft	16.4ft	19.7ft	23ft	26.2ft	29.5ft	32.8ft	36.1ft	39.4ft	42.7ft	45.9ft	49.2ft	52.5ft	55.8ft	59.1ft	62.3ft	65.6ft
174653lx	43663lx	19406lx	10916lx	6986lx	4851lx	3564lx	2729lx	2156lx	1747lx	1443lx	1213lx	1033lx	891lx	776lx	682lx	604lx	539lx	484lx	437lx
16225.8fc	4056.4fc	1802.9fc	1014.1fc	649fc	450.7fc	331.1fc	253.5fc	200.3fc	162.3fc	134.1fc	112.7fc	96fc	82.8fc	72.1fc	63.4fc	56.1fc	50.1fc	44.9fc	40.6fc

### Intensities in 0° c-plane

0°	1°	2°	3°	4°	5°	6°	7°	8°	9°	10°	11°	12°	13°	14°	15°	16°	17°	18°	19°
175K	172K	164K	150K	129K	102K	74K	50K	32K	20K	12K	9K	7K	6K	5K	4K	3K	3K	2K	2K
100%	98%	94%	86%	74%	58%	42%	29%	18%	11%	7%	5%	4%	3%	3%	2%	2%	2%	1%	1%

### Intensities in 90° c-plane

0°	1°	2°	3°	4°	5°	6°	7°	8°	9°	10°	11°	12°	13°	14°	15°	16°	17°	18°	19°
175K	172K	164K	150K	129K	102K	74K	50K	32K	20K	12K	9K	7K	6K	5K	4K	3K	3K	2K	2K
100%	98%	94%	86%	74%	58%	42%	29%	18%	11%	7%	5%	4%	3%	3%	2%	2%	2%	1%	1%

### Intensities in 180° c-plane

0°	1°	2°	3°	4°	5°	6°	7°	8°	9°	10°	11°	12°	13°	14°	15°	16°	17°	18°	19°
175K	172K	164K	150K	129K	102K	74K	50K	32K	20K	12K	9K	7K	6K	5K	4K	3K	3K	2K	2K
100%	98%	94%	86%	74%	58%	42%	29%	18%	11%	7%	5%	4%	3%	3%	2%	2%	2%	1%	1%

### Intensities in 270° c-plane

0°	1°	2°	3°	4°	5°	6°	7°	8°	9°	10°	11°	12°	13°	14°	15°	16°	17°	18°	19°
175K	172K	164K	150K	129K	102K	74K	50K	32K	20K	12K	9K	7K	6K	5K	4K	3K	3K	2K	2K
100%	98%	94%	86%	74%	58%	42%	29%	18%	11%	7%	5%	4%	3%	3%	2%	2%	2%	1%	1%

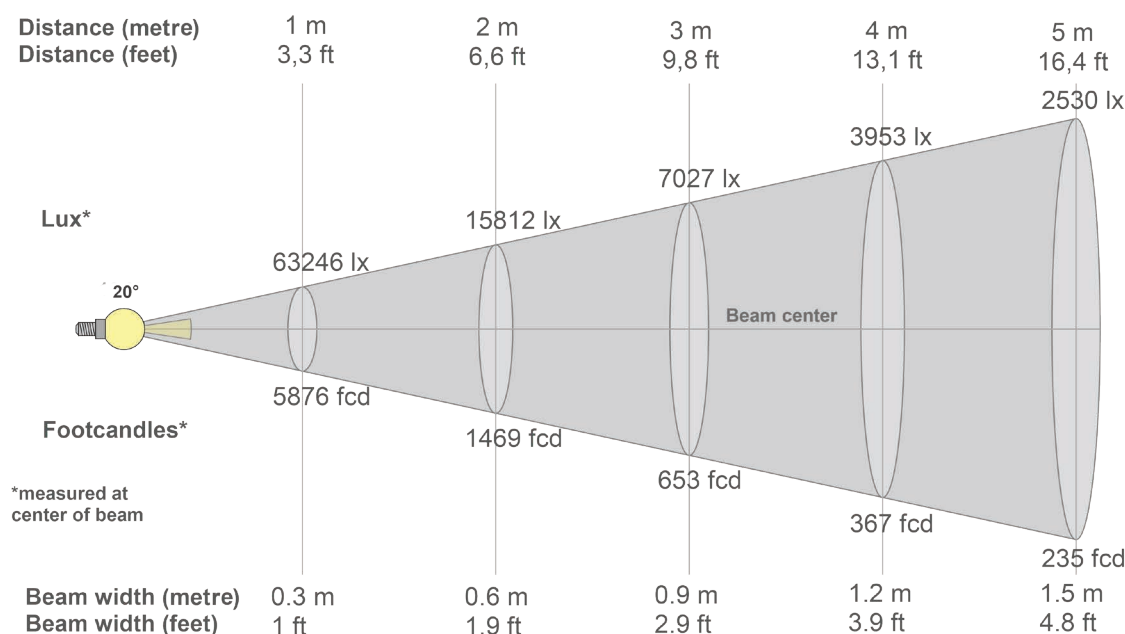
Beam angle 50%	Field angle 10%	Cutoff angle 2,5%	Intensity ratio in 120° cone	Intensity ratio in 90° cone
11°	18.5°	29.3°	97.8%	96.4%

### PULSAR

1 Pembroke Avenue, Waterbeach, Cambridge, CB25 9QP  
[www.pulsarlight.com](http://www.pulsarlight.com) | [sales@pulsarlight.com](mailto:sales@pulsarlight.com) | +44 (0) 1223 403 500

## LuxEOS Flood 36 - RGBW (2700K)

Intensities at Distance with 20° Optics



### Beam intensities from 1-20m

1m	2m	3m	4m	5m	6m	7m	8m	9m	10m	11m	12m	13m	14m	15m	16m	17m	18m	19m	20m
3.3ft	6.6ft	9.8ft	13.1ft	16.4ft	19.7ft	23ft	26.2ft	29.5ft	32.8ft	36.1ft	39.4ft	42.7ft	45.9ft	49.2ft	52.5ft	55.8ft	59.1ft	62.3ft	65.6ft
63246lx	15812lx	7027lx	3953lx	2530lx	1757lx	1291lx	988lx	781lx	632lx	523lx	439lx	374lx	323lx	281lx	247lx	219lx	195lx	175lx	158lx
5875.8fc	1468.9fc	652.9fc	367.2fc	235fc	163.2fc	119.9fc	91.8fc	72.5fc	58.8fc	48.6fc	40.8fc	34.8fc	30fc	26.1fc	23fc	20.3fc	18.1fc	16.3fc	14.7fc

### Intensities in 0° c-plane

0°	1°	2°	3°	4°	5°	6°	7°	8°	9°	10°	11°	12°	13°	14°	15°	16°	17°	18°	19°
63.2K	62.7K	60.8K	57.8K	53.8K	49.1K	44.0K	38.7K	33.5K	28.6K	24.0K	19.9K	16.4K	13.4K	10.8K	8.8K	7.1K	5.7K	4.7K	3.8K
100%	99%	96%	91%	85%	78%	70%	61%	53%	45%	38%	32%	26%	21%	17%	14%	11%	9%	7%	6%

### Intensities in 90° c-plane

0°	1°	2°	3°	4°	5°	6°	7°	8°	9°	10°	11°	12°	13°	14°	15°	16°	17°	18°	19°
63.2K	62.7K	60.8K	57.8K	53.8K	49.1K	44.0K	38.7K	33.5K	28.6K	24.0K	19.9K	16.4K	13.4K	10.8K	8.8K	7.1K	5.7K	4.7K	3.8K
100%	99%	96%	91%	85%	78%	70%	61%	53%	45%	38%	32%	26%	21%	17%	14%	11%	9%	7%	6%

### Intensities in 180° c-plane

0°	1°	2°	3°	4°	5°	6°	7°	8°	9°	10°	11°	12°	13°	14°	15°	16°	17°	18°	19°
63.2K	62.7K	60.8K	57.8K	53.8K	49.1K	44.0K	38.7K	33.5K	28.6K	24.0K	19.9K	16.4K	13.4K	10.8K	8.8K	7.1K	5.7K	4.7K	3.8K
100%	99%	96%	91%	85%	78%	70%	61%	53%	45%	38%	32%	26%	21%	17%	14%	11%	9%	7%	6%

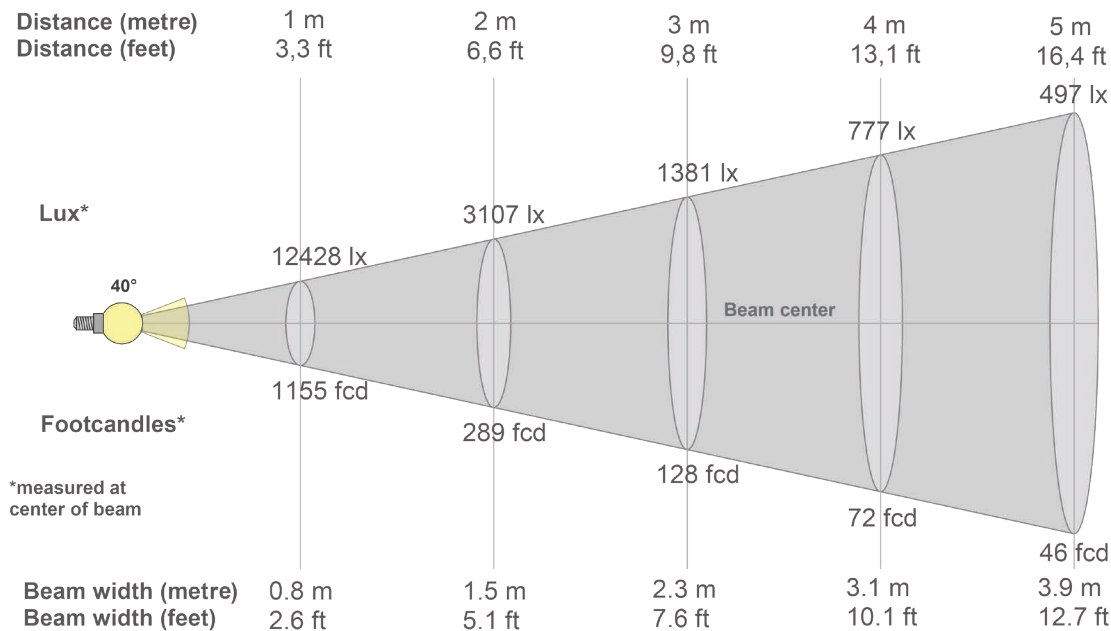
### Intensities in 270° c-plane

0°	1°	2°	3°	4°	5°	6°	7°	8°	9°	10°	11°	12°	13°	14°	15°	16°	17°	18°	19°
63.2K	62.7K	60.8K	57.8K	53.8K	49.1K	44.0K	38.7K	33.5K	28.6K	24.0K	19.9K	16.4K	13.4K	10.8K	8.8K	7.1K	5.7K	4.7K	3.8K
100%	99%	96%	91%	85%	78%	70%	61%	53%	45%	38%	32%	26%	21%	17%	14%	11%	9%	7%	6%

Beam angle 50%	Field angle 10%	Cutoff angle 2,5%	Intensity ratio in 120° cone	Intensity ratio in 90° cone
16.8°	33.1°	47.6°	97.0%	94.9%

## LuxEOS Flood 36 - RGBW (2700K)

Intensities at Distance with 40° Optics



### Beam intensities from 1-20m

1m	2m	3m	4m	5m	6m	7m	8m	9m	10m	11m	12m	13m	14m	15m	16m	17m	18m	19m	20m
3.3ft	6.6ft	9.8ft	13.1ft	16.4ft	19.7ft	23ft	26.2ft	29.5ft	32.8ft	36.1ft	39.4ft	42.7ft	45.9ft	49.2ft	52.5ft	55.8ft	59.1ft	62.3ft	65.6ft
12428lx	3107lx	1381lx	777lx	497lx	345lx	254lx	194lx	153lx	124lx	103lx	86lx	74lx	63lx	55lx	49lx	43lx	38lx	34lx	31lx
1154.6fc	288.6fc	128.3fc	72.2fc	46.2fc	32.1fc	23.6fc	18fc	14.3fc	11.5fc	9.5fc	8fc	6.8fc	5.9fc	5.1fc	4.5fc	4fc	3.6fc	3.2fc	2.9fc

### Intensities in 0° c-plane

0°	2°	4°	6°	8°	10°	12°	14°	16°	18°	20°	22°	24°	26°	28°	30°	32°	34°	36°	38°
12.4K	12.4K	12.2K	11.9K	11.5K	11.0K	10.3K	9.6K	8.7K	7.8K	6.8K	5.8K	4.9K	4.1K	3.3K	2.8K	2.3K	1.9K	1.5K	1.3K
100%	100%	98%	96%	93%	88%	83%	77%	70%	62%	55%	47%	39%	33%	27%	22%	18%	15%	12%	10%

### Intensities in 90° c-plane

0°	2°	4°	6°	8°	10°	12°	14°	16°	18°	20°	22°	24°	26°	28°	30°	32°	34°	36°	38°
12.4K	12.4K	12.2K	11.9K	11.5K	11.0K	10.3K	9.6K	8.7K	7.8K	6.8K	5.8K	4.9K	4.1K	3.3K	2.8K	2.3K	1.9K	1.5K	1.3K
100%	100%	98%	96%	93%	88%	83%	77%	70%	62%	55%	47%	39%	33%	27%	22%	18%	15%	12%	10%

### Intensities in 180° c-plane

0°	2°	4°	6°	8°	10°	12°	14°	16°	18°	20°	22°	24°	26°	28°	30°	32°	34°	36°	38°
12.4K	12.4K	12.2K	11.9K	11.5K	11.0K	10.3K	9.6K	8.7K	7.8K	6.8K	5.8K	4.9K	4.1K	3.3K	2.8K	2.3K	1.9K	1.5K	1.3K
100%	100%	98%	96%	93%	88%	83%	77%	70%	62%	55%	47%	39%	33%	27%	22%	18%	15%	12%	10%

### Intensities in 270° c-plane

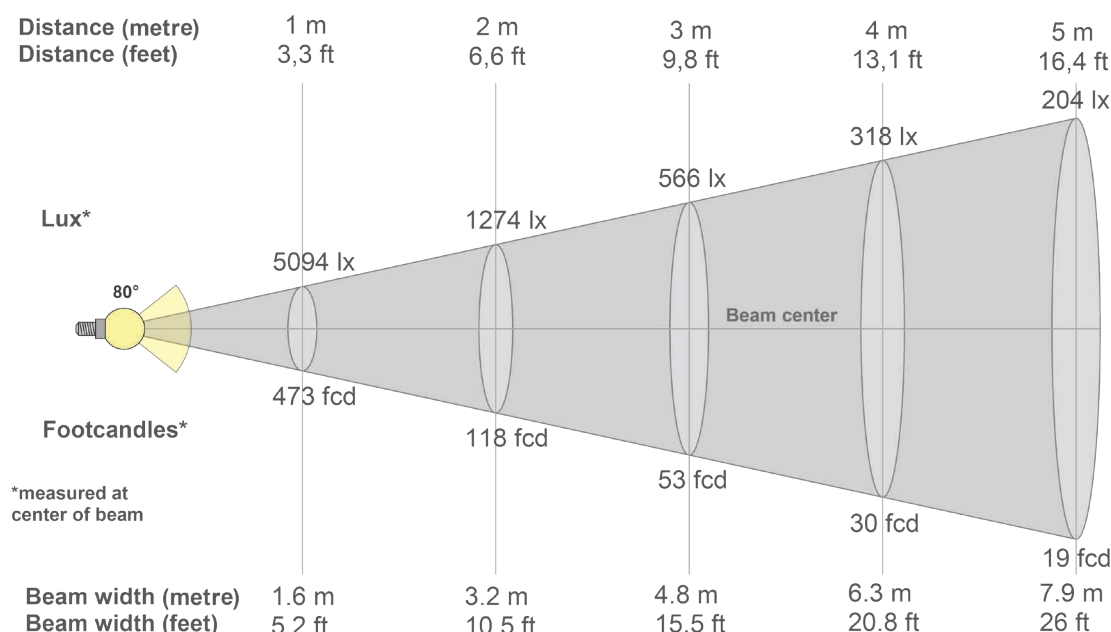
0°	2°	4°	6°	8°	10°	12°	14°	16°	18°	20°	22°	24°	26°	28°	30°	32°	34°	36°	38°
12.4K	12.4K	12.2K	11.9K	11.5K	11.0K	10.3K	9.6K	8.7K	7.8K	6.8K	5.8K	4.9K	4.1K	3.3K	2.8K	2.3K	1.9K	1.5K	1.3K
100%	100%	98%	96%	93%	88%	83%	77%	70%	62%	55%	47%	39%	33%	27%	22%	18%	15%	12%	10%

Beam angle 50%	Field angle 10%	Cutoff angle 2,5%	Intensity ratio in 120° cone	Intensity ratio in 90° cone
42.3°	76.6°	105.5°	96.7%	90.9%



## LuxEOS Flood 36 - RGBW (2700K)

Intensities at Distance with 80° Optics



### Beam intensities from 1-20m

1m	2m	3m	4m	5m	6m	7m	8m	9m	10m	11m	12m	13m	14m	15m	16m	17m	18m	19m	20m
3.3ft	6.6ft	9.8ft	13.1ft	16.4ft	19.7ft	23ft	26.2ft	29.5ft	32.8ft	36.1ft	39.4ft	42.7ft	45.9ft	49.2ft	52.5ft	55.8ft	59.1ft	62.3ft	65.6ft
5094lx	1274lx	566lx	318lx	204lx	142lx	104lx	80lx	63lx	51lx	42lx	35lx	30lx	26lx	23lx	20lx	18lx	16lx	14lx	13lx
473.3fcd	118.3fcd	52.6fcd	29.6fcd	18.9fcd	13.1fcd	9.7fcd	7.4fcd	5.8fcd	4.7fcd	3.9fcd	3.3fcd	2.8fcd	2.4fcd	2.1fcd	1.8fcd	1.6fcd	1.5fcd	1.3fcd	1.2fcd

### Intensities in 0° c-plane

0°	5°	10°	15°	20°	25°	30°	35°	40°	45°	50°	55°	60°	65°	70°	75°	80°	85°	90°	95°
5094	4926	4694	4644	4595	4377	3885	3118	2284	1526	919	532	318	201	130	79	39	11	3	0
100%	97%	92%	91%	90%	86%	76%	61%	45%	30%	18%	10%	6%	4%	3%	2%	1%	0%	0%	0%

### Intensities in 90° c-plane

0°	5°	10°	15°	20°	25°	30°	35°	40°	45°	50°	55°	60°	65°	70°	75°	80°	85°	90°	95°
5094	4926	4694	4644	4595	4377	3885	3118	2284	1526	919	532	318	201	130	79	39	11	3	0
100%	97%	92%	91%	90%	86%	76%	61%	45%	30%	18%	10%	6%	4%	3%	2%	1%	0%	0%	0%

### Intensities in 180° c-plane

0°	5°	10°	15°	20°	25°	30°	35°	40°	45°	50°	55°	60°	65°	70°	75°	80°	85°	90°	95°
5094	4926	4694	4644	4595	4377	3885	3118	2284	1526	919	532	318	201	130	79	39	11	3	0
100%	97%	92%	91%	90%	86%	76%	61%	45%	30%	18%	10%	6%	4%	3%	2%	1%	0%	0%	0%

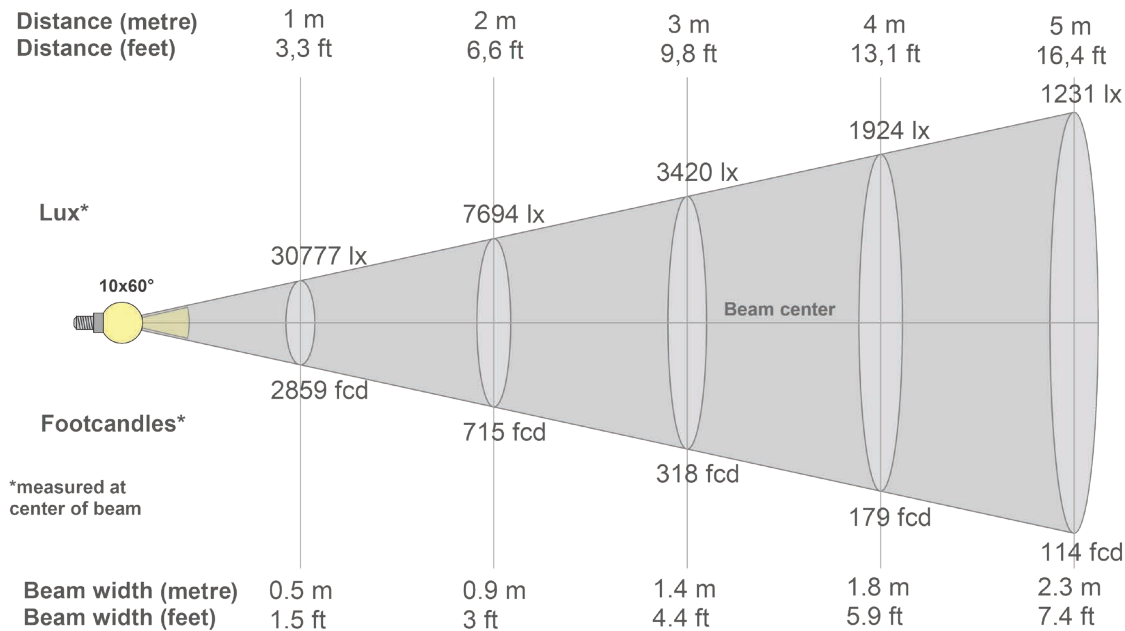
### Intensities in 270° c-plane

0°	5°	10°	15°	20°	25°	30°	35°	40°	45°	50°	55°	60°	65°	70°	75°	80°	85°	90°	95°
5094	4926	4694	4644	4595	4377	3885	3118	2284	1526	919	532	318	201	130	79	39	11	3	0
100%	97%	92%	91%	90%	86%	76%	61%	45%	30%	18%	10%	6%	4%	3%	2%	1%	0%	0%	0%

Beam angle 50%	Field angle 10%	Cutoff angle 2,5%	Intensity ratio in 120° cone	Intensity ratio in 90° cone
76.8°	110.8°	140.5°	95.0%	82.4%

## LuxEOS Flood 36 - RGBW (2700K)

Intensities at Distance with 10x60° & 60x10° Optics



### Beam intensities from 1-20m

1m	2m	3m	4m	5m	6m	7m	8m	9m	10m	11m	12m	13m	14m	15m	16m	17m	18m	19m	20m
3.3ft	6.6ft	9.8ft	13.1ft	16.4ft	19.7ft	23ft	26.2ft	29.5ft	32.8ft	36.1ft	39.4ft	42.7ft	45.9ft	49.2ft	52.5ft	55.8ft	59.1ft	62.3ft	65.6ft
30777lx	7694lx	3420lx	1924lx	1231lx	855lx	628lx	481lx	380lx	308lx	254lx	214lx	182lx	157lx	137lx	120lx	106lx	95lx	85lx	77lx
2859.3fc	714.8fc	317.7fc	178.7fc	114.4fc	79.4fc	58.4fc	44.7fc	35.3fc	28.6fc	23.6fc	19.9fc	16.9fc	14.6fc	12.7fc	11.2fc	9.9fc	8.8fc	7.9fc	7.1fc

### Intensities in 0° c-plane

0°	2°	4°	6°	8°	10°	12°	14°	16°	18°	20°	22°	24°	26°	28°	30°	32°	34°	36°	38°
30.8K	28.9K	28.6K	28.3K	27.9K	27.4K	26.8K	26.2K	25.3K	24.2K	22.9K	21.2K	19.2K	17.0K	14.7K	12.4K	10.2K	8.2K	6.4K	4.9K
100%	94%	93%	92%	91%	89%	87%	85%	82%	79%	74%	69%	62%	55%	48%	40%	33%	27%	21%	16%

### Intensities in 90° c-plane

0°	2°	4°	6°	8°	10°	12°	14°	16°	18°	20°	22°	24°	26°	28°	30°	32°	34°	36°	38°
30.8K	30.4K	22.5K	13.6K	7.3K	4.3K	2.9K	2.1K	1.5K	1.0K	0.8K	0.6K	0.5K	0.4K	0.3K	0.3K	0.2K	0.2K	0.2K	0.2K
100%	99%	73%	44%	24%	14%	9%	7%	5%	3%	3%	2%	2%	1%	1%	1%	1%	1%	1%	1%

### Intensities in 180° c-plane

0°	2°	4°	6°	8°	10°	12°	14°	16°	18°	20°	22°	24°	26°	28°	30°	32°	34°	36°	38°
30.8K	28.9K	28.6K	28.3K	27.9K	27.4K	26.8K	26.2K	25.3K	24.2K	22.9K	21.2K	19.2K	17.0K	14.7K	12.4K	10.2K	8.2K	6.4K	4.9K
100%	94%	93%	92%	91%	89%	87%	85%	82%	79%	74%	69%	62%	55%	48%	40%	33%	27%	21%	16%

### Intensities in 270° c-plane

0°	2°	4°	6°	8°	10°	12°	14°	16°	18°	20°	22°	24°	26°	28°	30°	32°	34°	36°	38°
30.8K	30.4K	22.5K	13.6K	7.3K	4.3K	2.9K	2.1K	1.5K	1.0K	0.8K	0.6K	0.5K	0.4K	0.3K	0.3K	0.2K	0.2K	0.2K	0.2K
100%	99%	73%	44%	24%	14%	9%	7%	5%	3%	3%	2%	2%	1%	1%	1%	1%	1%	1%	1%

Beam angle 50%	Field angle 10%	Cutoff angle 2,5%	Intensity ratio in 120° cone	Intensity ratio in 90° cone
25.5°	45.7°	66.1°	97.5%	94.0%

### PULSAR

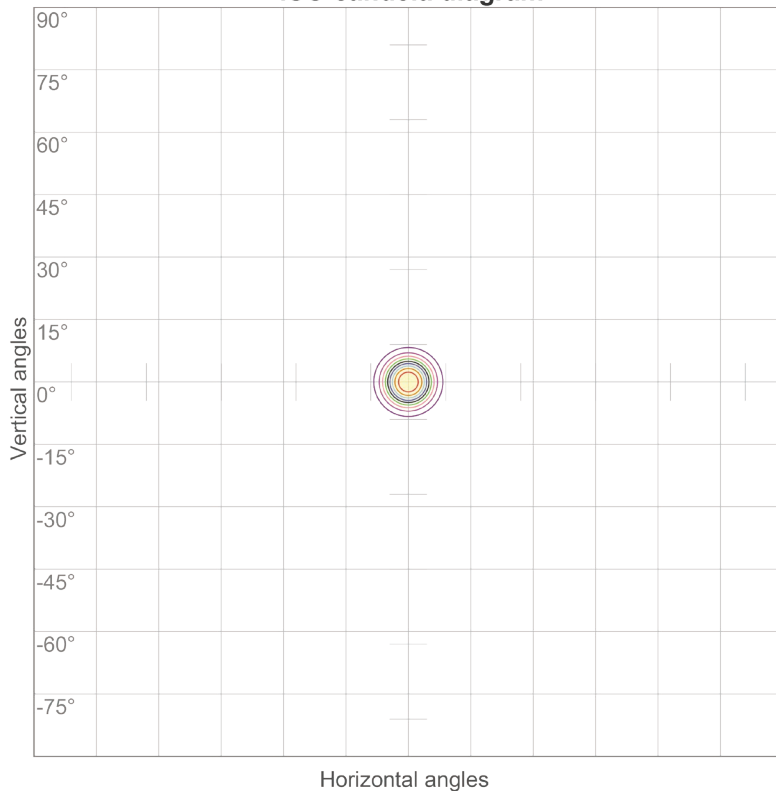
1 Pembroke Avenue, Waterbeach, Cambridge, CB25 9QP  
[www.pulsarlight.com](http://www.pulsarlight.com) | [sales@pulsarlight.com](mailto:sales@pulsarlight.com) | +44 (0) 1223 403 500

## LuxEOS Flood 36 - RGBW (2700K)

ISO Candela & ISO Lux diagrams with 10° Optics



ISO candela diagram



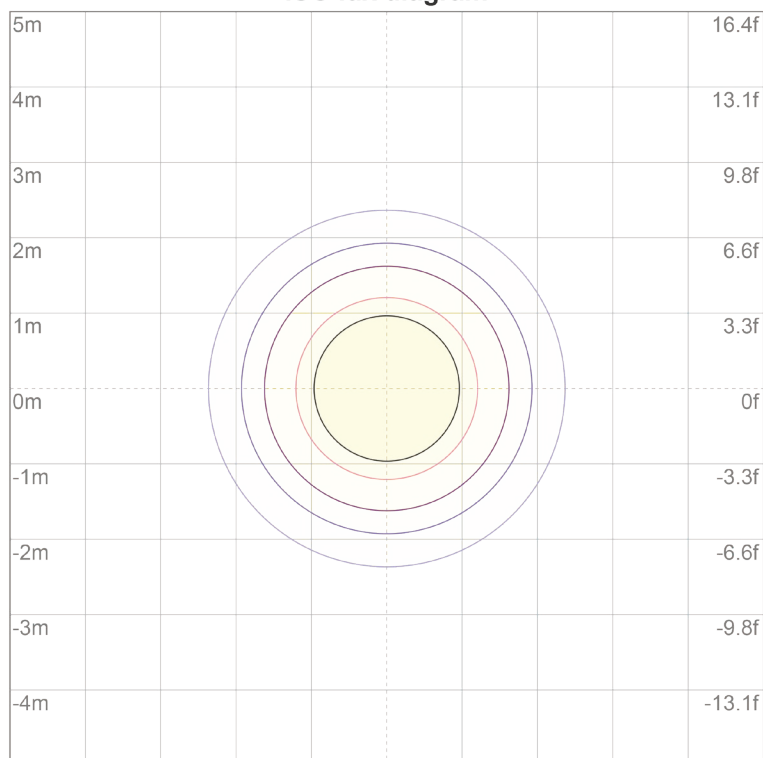
10%	17465 cd
20%	34931 cd
30%	52396 cd
40%	69861 cd
50%	87326 cd
60%	104792 cd
70%	122257 cd
80%	139722 cd
90%	157188 cd

Conditions:

Number of c-planes: 72

Candela at center: 174653 cd

ISO lux diagram



3%	52.4 lx
5%	87.3 lx
10%	175 lx
30%	524 lx
50%	873 lx

Conditions:

Number of c-planes: 72

Lux at center: 1747 lx

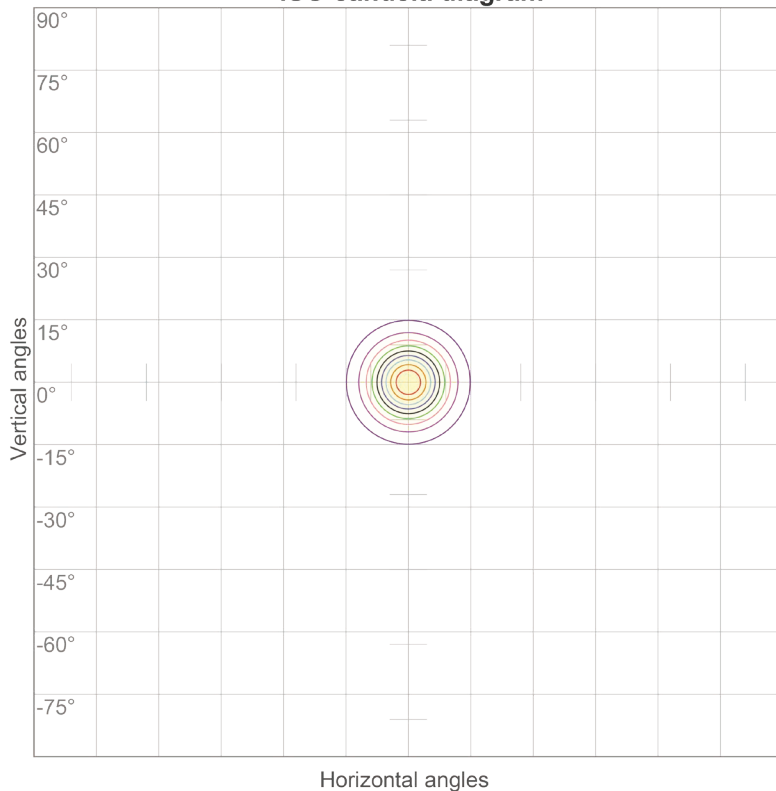
*Lux distribution on a surface  
when lamp is mounted at 10  
meters from the surface.*

## LuxEOS Flood 36 - RGBW (2700K)

ISO Candela & ISO Lux diagrams with 20° Optics



ISO candela diagram



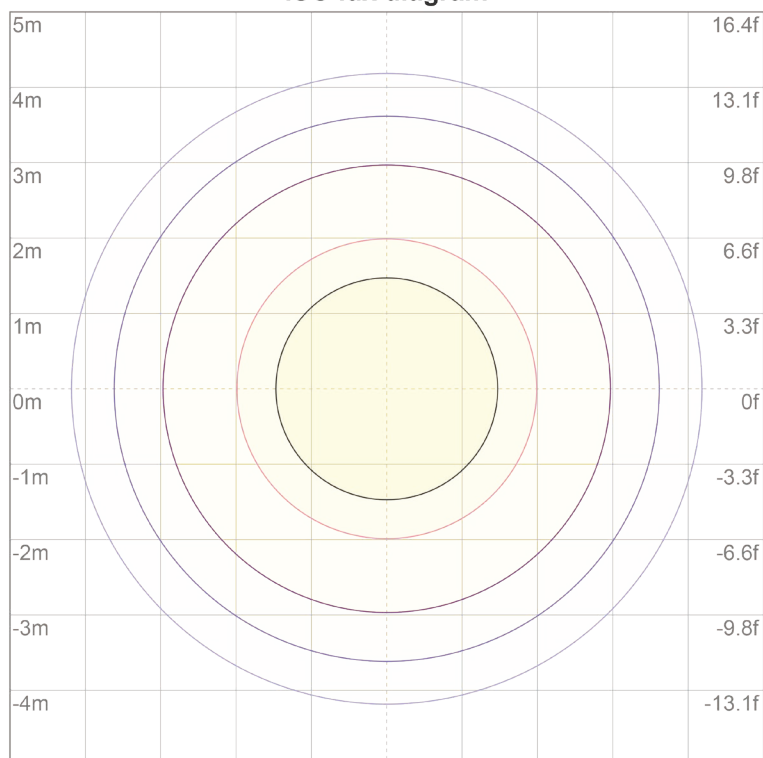
10%	6325 cd
20%	12649 cd
30%	18974 cd
40%	25299 cd
50%	31623 cd
60%	37948 cd
70%	44272 cd
80%	50597 cd
90%	56922 cd

Conditions:

Number of c-planes: 72

Candela at center: 63246 cd

ISO lux diagram



3%	19.0 lx
5%	31.6 lx
10%	63.2 lx
30%	190 lx
50%	316 lx

Conditions:

Number of c-planes: 72

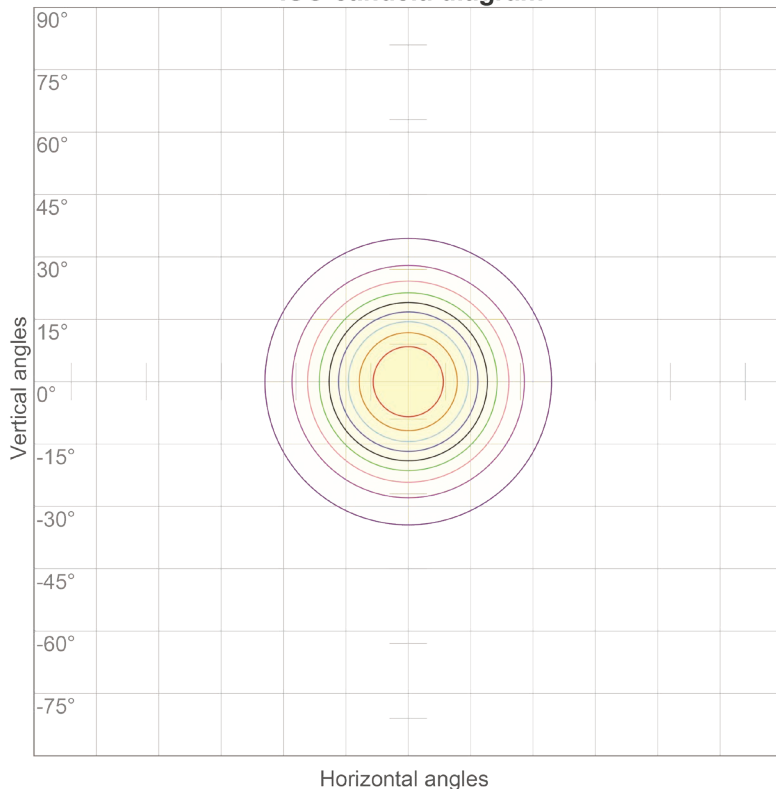
Lux at center: 632 lx

*Lux distribution on a surface  
when lamp is mounted at 10  
meters from the surface.*





ISO candela diagram



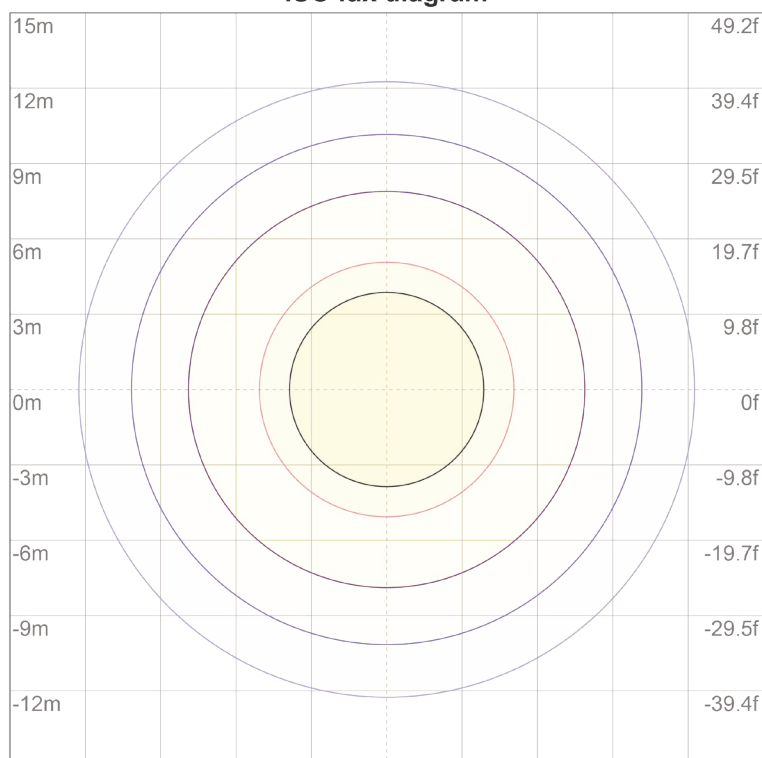
10%	1243 cd
20%	2486 cd
30%	3728 cd
40%	4971 cd
50%	6214 cd
60%	7457 cd
70%	8700 cd
80%	9942 cd
90%	11185 cd

Conditions:

Number of c-planes: 72

Candela at center: 12428 cd

ISO lux diagram



3%	3.73 lx
5%	6.21 lx
10%	12.4 lx
30%	37.3 lx
50%	62.1 lx

Conditions:

Number of c-planes: 72

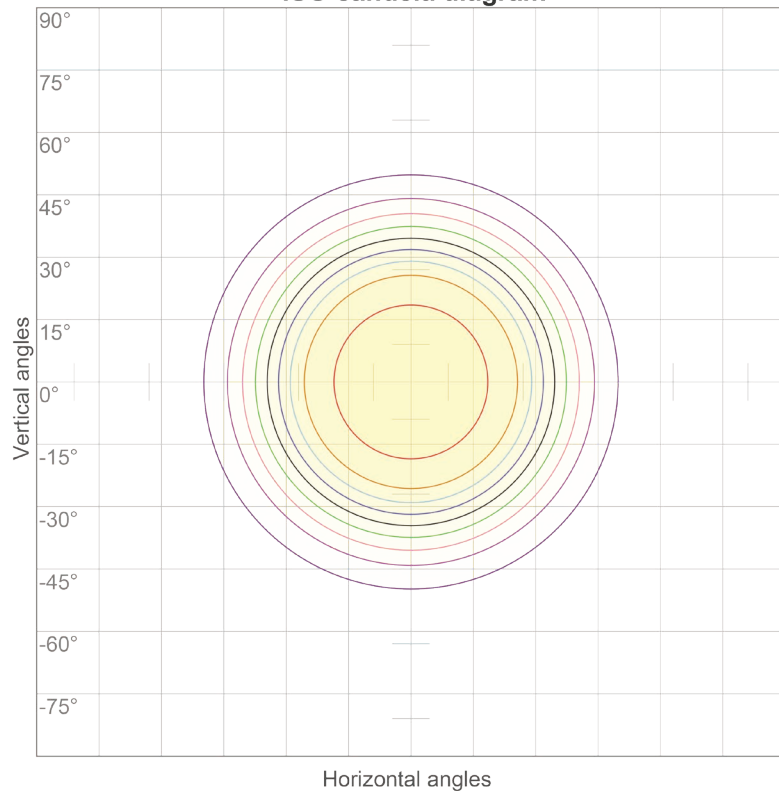
Lux at center: 124 lx

*Lux distribution on a surface  
when lamp is mounted at 10  
meters from the surface.*

## LuxEOS Flood 36 - RGBW (2700K) ISO Candela & ISO Lux diagrams with 80° Optics



ISO candela diagram



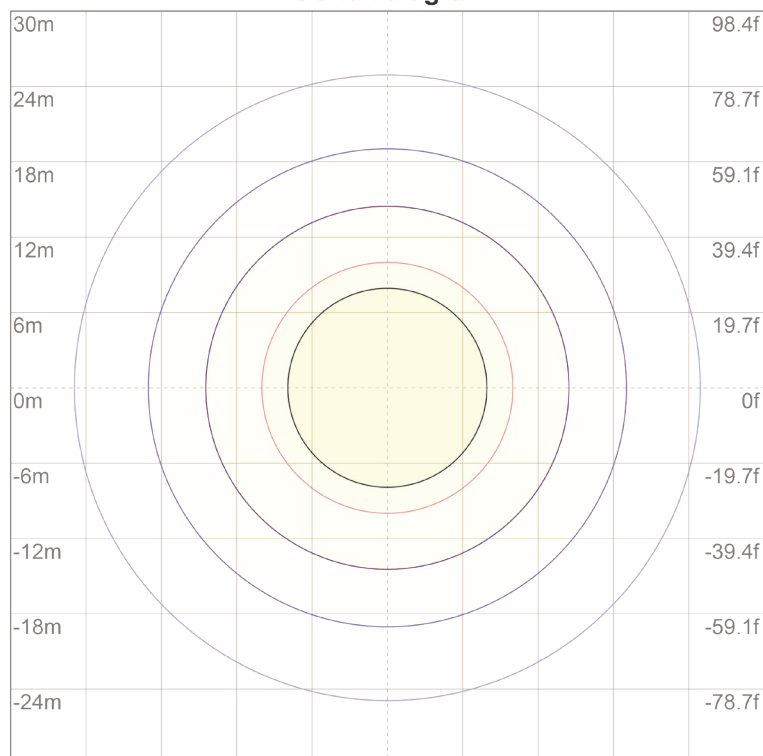
10%	509 cd
20%	1019 cd
30%	1528 cd
40%	2038 cd
50%	2547 cd
60%	3056 cd
70%	3566 cd
80%	4075 cd
90%	4585 cd

Conditions:

Number of c-planes: 72

Candela at center: 5094 cd

ISO lux diagram



3%	1.53 lx
5%	2.55 lx
10%	5.09 lx
30%	15.3 lx
50%	25.5 lx

Conditions:

Number of c-planes: 72

Lux at center: 50.9 lx

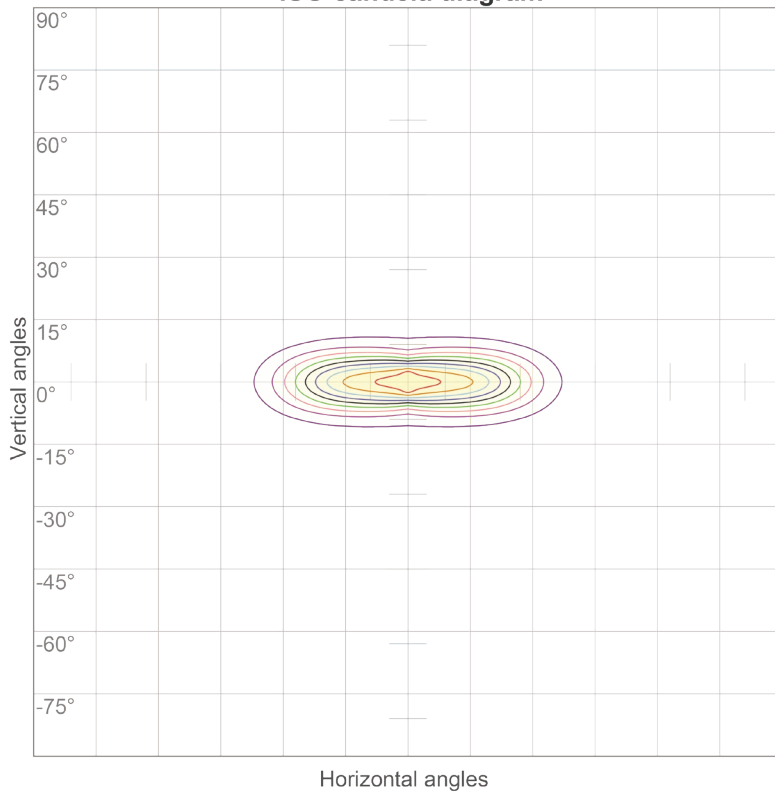
*Lux distribution on a surface  
when lamp is mounted at 10  
meters from the surface.*

## LuxEOS Flood 36 - RGBW (2700K)

ISO Candela & ISO Lux diagrams with 10x60° & 60x10° Optics



ISO candela diagram



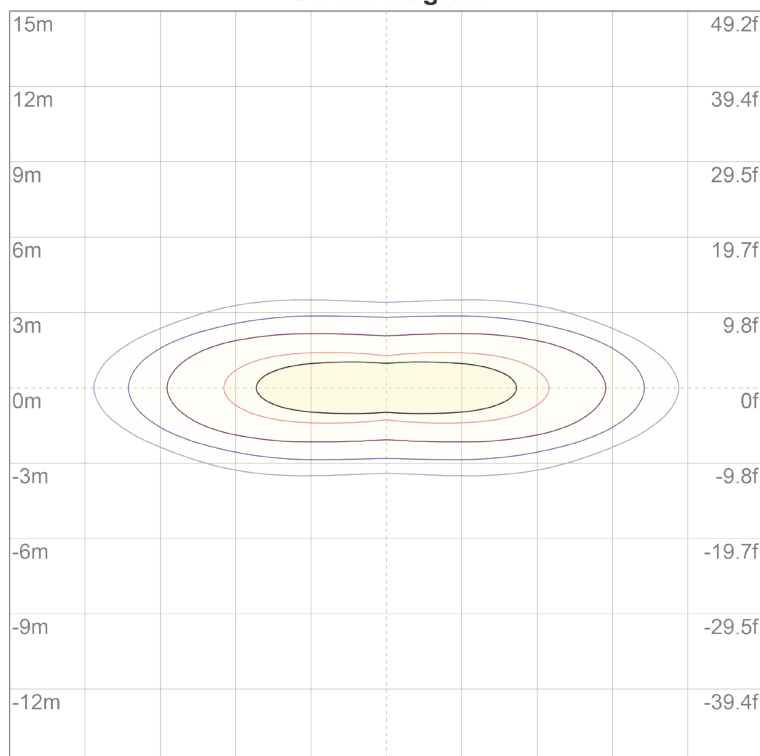
10%	1539 cd
20%	3077 cd
30%	4616 cd
40%	6155 cd
50%	7693 cd
60%	9232 cd
70%	10771 cd
80%	12309 cd
90%	13848 cd

Conditions:

Number of c-planes: 72

Candela at center: 15386 cd

ISO lux diagram



3%	4.62 lx
5%	7.69 lx
10%	15.4 lx
30%	46.2 lx
50%	76.9 lx

Conditions:

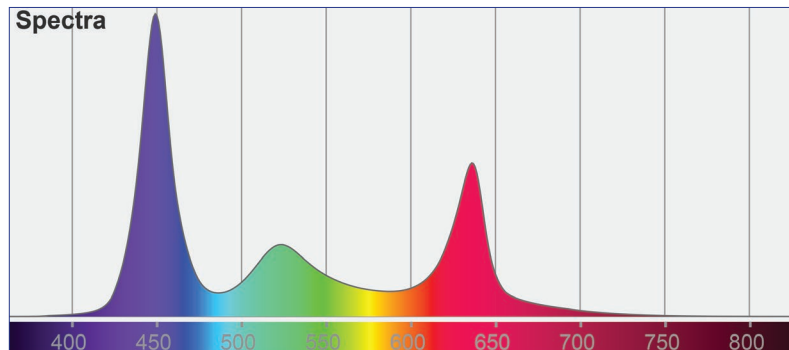
Number of c-planes: 72

Lux at center: 154 lx

*Lux distribution on a surface  
when lamp is mounted at 10  
meters from the surface.*

## LuxEOS Flood 36 - RGBW (2700K)

Colormetrics **RGBW**



Total Lumen Output (Native) : 8240 lm

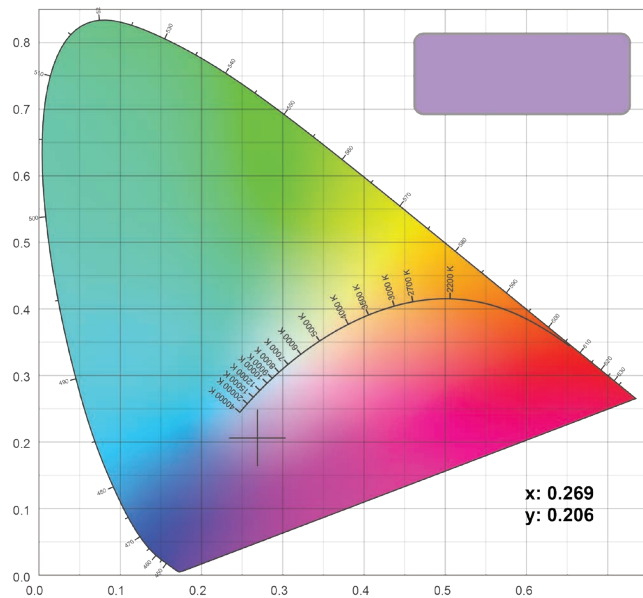
Efficacy : 34.3 lm/W

Voltage : 240V

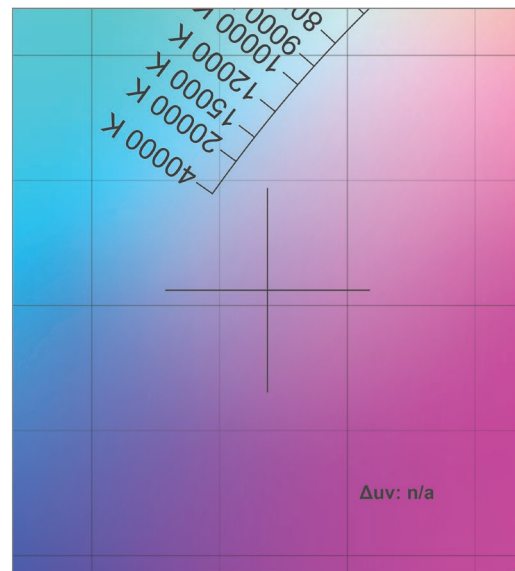
Supply Power : 240W

Supply Power Factor : 0.97

CIE 1931



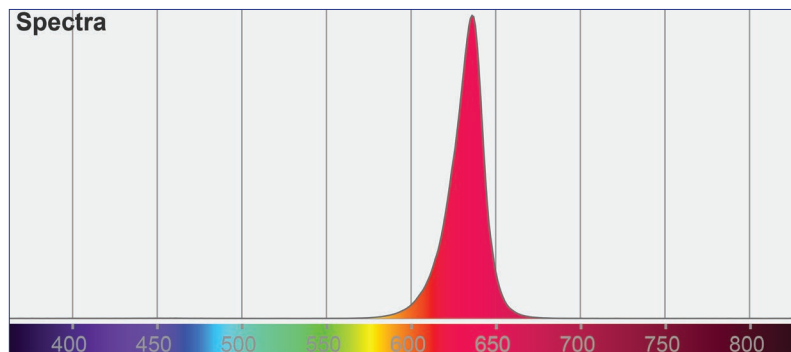
CIE 1931 Zoom





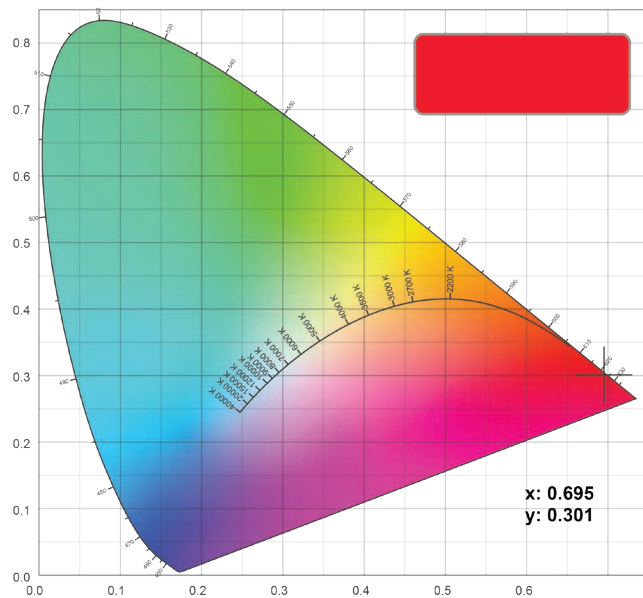
## LuxEOS Flood 36 - RGBW (2700K)

Colormetrics **RED**

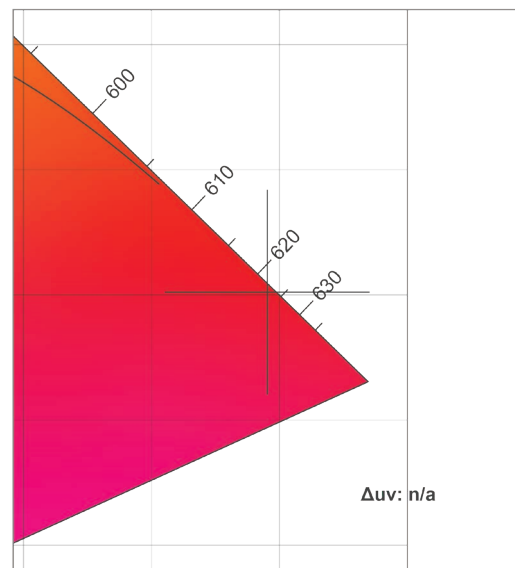


Red Lumen Output : 2108 lm

CIE 1931

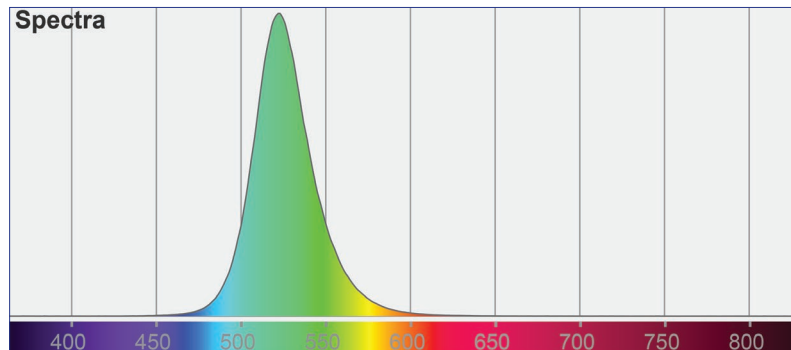


CIE 1931 Zoom



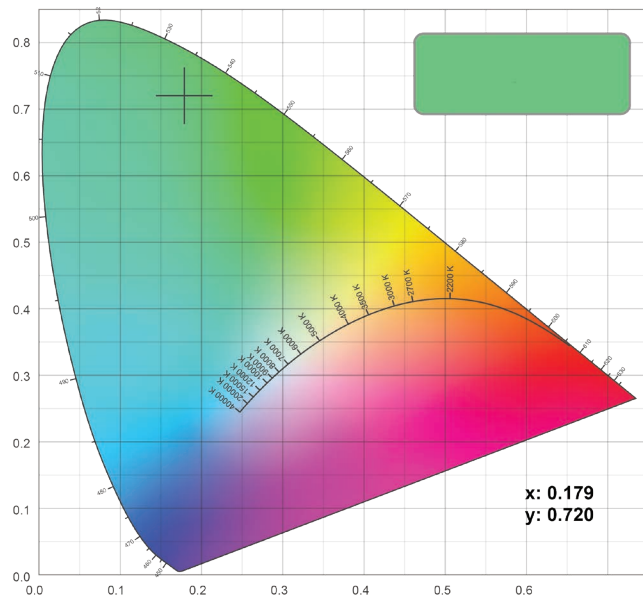
## LuxEOS Flood 36 - RGBW (2700K)

Colormetrics **GREEN**

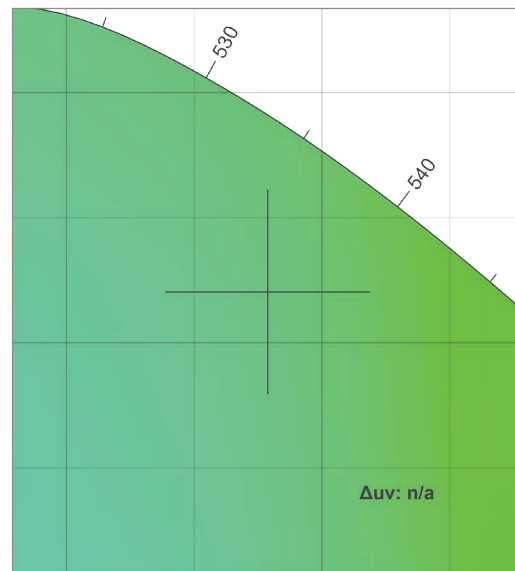


Green Lumen Output : 3236 lm

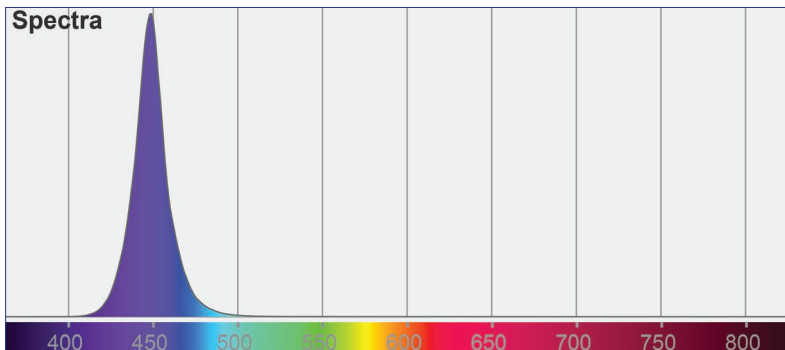
CIE 1931



CIE 1931 Zoom

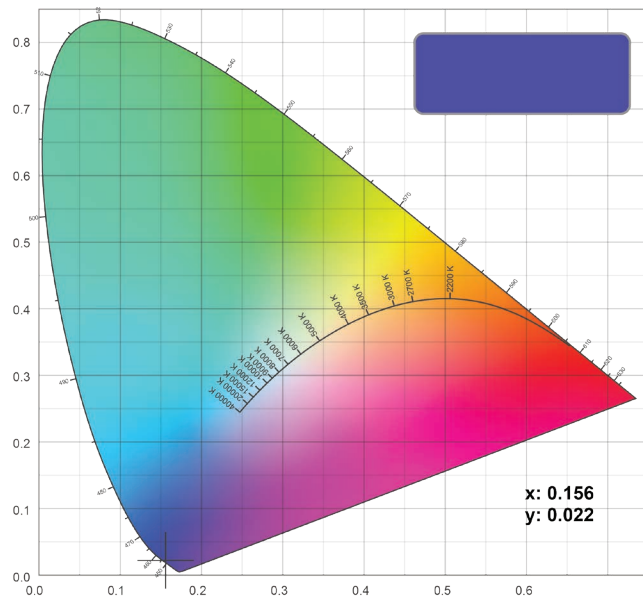


## LuxEOS Flood 36 - RGBW (2700K) Colormetrics **BLUE**

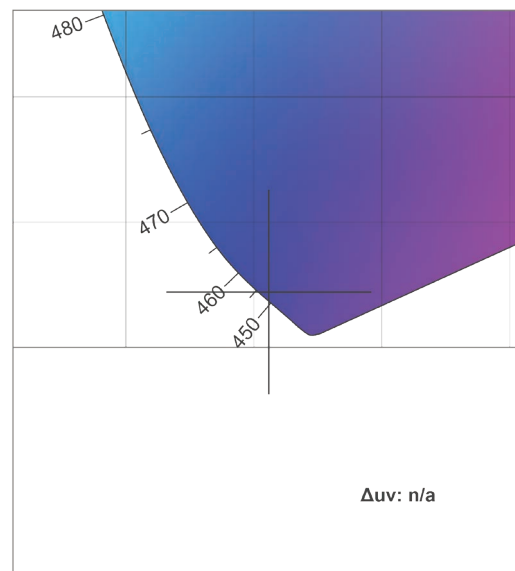


Blue Lumen Output : 712 lm

CIE 1931

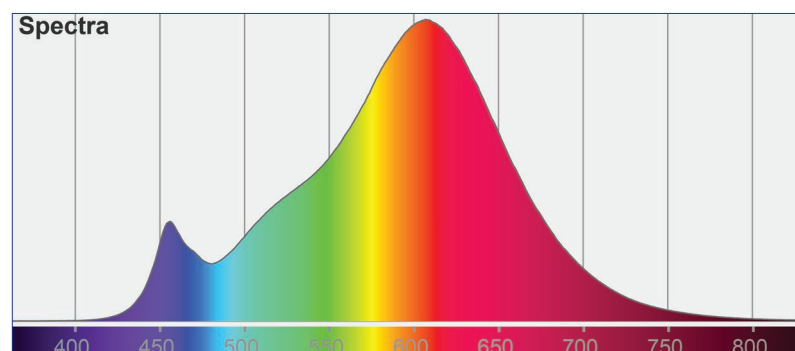


CIE 1931 Zoom



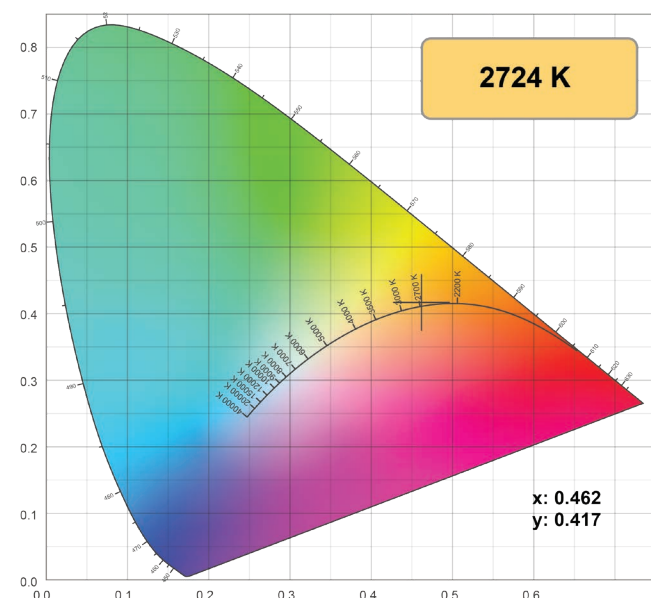
## LuxEOS Flood 36 - RGBW (2700K)

Colormetrics **White 2700K**

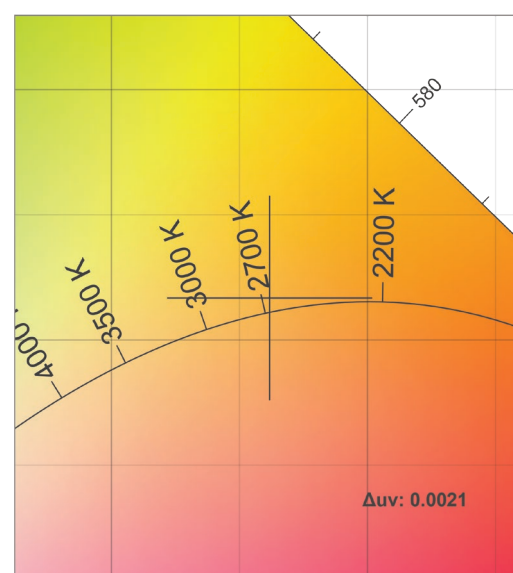


White 2700K Lumen Output : 4584 lm  
CRI: 90

### CIE 1931



### CIE 1931 Zoom



Should further photometric variations be required, please contact our Head Office.

As part our commitment to continuous improvement PULSAR may change the specifications of its products without prior notification or public announcement.

All descriptions, illustrations, drawings and specifications in this publication present only general particulars and shall not form part of any contract.

### PULSAR

1 Pembroke Avenue, Waterbeach, Cambridge, CB25 9QP  
www.pulsarlight.com | sales@pulsarlight.com | +44 (0) 1223 403 500