

Sephora

Contemporary lighting that
defies convention





Power to professionals

Designing urban spaces

From large area, high output illumination to low-level, human-focused lighting of pedestrian squares and urban spaces: Sephora is your complete, modular, customisable lighting solution.

Featuring high-performance light engines, the Sephora family, circular in shape, versatile in application, includes three sizes and a choice of aesthetic.

Key advantages

- Modular and customisable design
- Up to 34000lm
- Specially designed circular high-performance LED light engines
- ULOR 0%
- 2200K - 4000K
- Range of control options
- Smart City ready – accommodating internal nodes for minimal aesthetic impact

Applications

-  Public realm – public spaces & road lighting
-  Building surrounds
-  Car parks
-  Housing developments



our range

at a glance

A super flexible, modular and customisable family of luminaires. Sephora's understated design is consistent across the range for visual cohesion across multiple applications.

Two styles

Radius

A contemporary curved aesthetic



Cubis

Simple, clean, angular aesthetic



Three sizes

450

From 1000 to 18000lm, perfectly proportioned for lower mounting heights



650

From 10000 to 34000lm, the perfect balance between style and performance. Suitable for mounting up to 12 metres



Halo

From 1000 to 18000lm, attractive design for statement applications



Mounting

450

Side entry
Ø42mm



Direct post
Ø76mm



Post top
Ø76mm



650

Side entry
Ø42mm



Direct post
Ø76mm



Post top
Ø114mm



Halo

Side entry
Ø42mm



Direct post
Ø76mm



Curved direct post (internal)
Ø76mm



Curved direct post (external)
Ø76mm





a product for any application

Sephora's flexible range of styles, lighting performance and mounting configurations allow it to be used across multiple applications, whilst creating a unified aesthetic. From busy traffic routes, to pedestrianised public spaces, Sephora provides a considered, consistent solution.

Sephora 450
For mounting at 5-8 metres

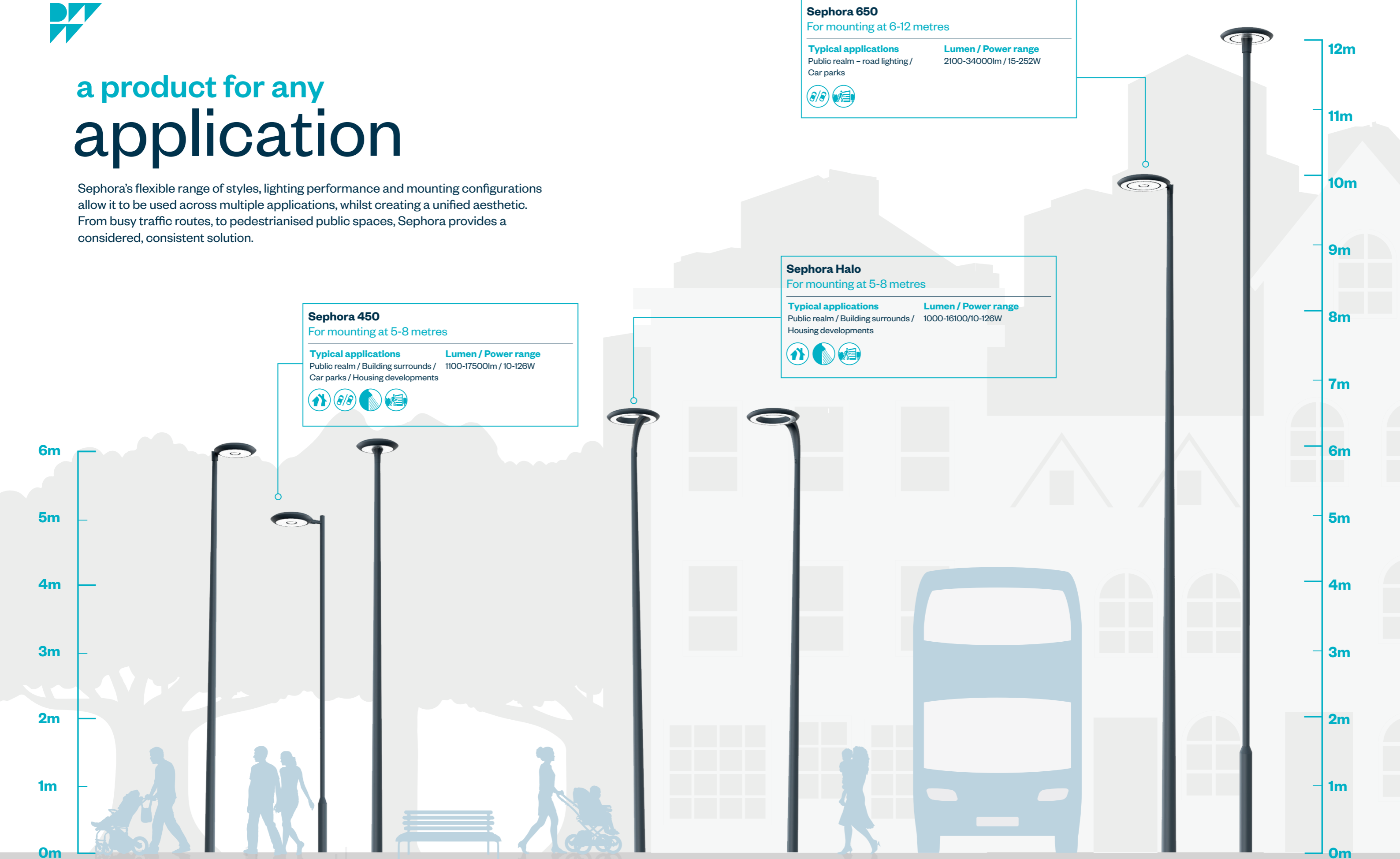
Typical applications	Lumen / Power range
Public realm / Building surrounds / Car parks / Housing developments	1100-17500lm / 10-126W

Sephora 650
For mounting at 6-12 metres

Typical applications	Lumen / Power range
Public realm - road lighting / Car parks	2100-34000lm / 15-252W

Sephora Halo
For mounting at 5-8 metres

Typical applications	Lumen / Power range
Public realm / Building surrounds / Housing developments	1000-16100/10-126W





performance lighting

Optimised performance and efficacy specifically designed for traffic applications.

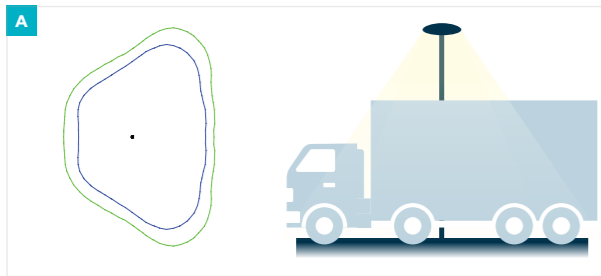




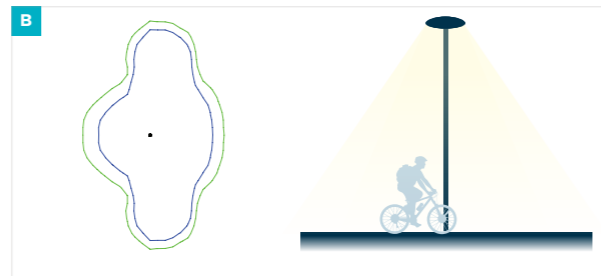
performance lighting

Using the latest LEDs, performance lenses and a reflective LED surround, we have created a highly efficient light engine offering optimised energy savings and a low glare appearance. Perfect for traffic applications.

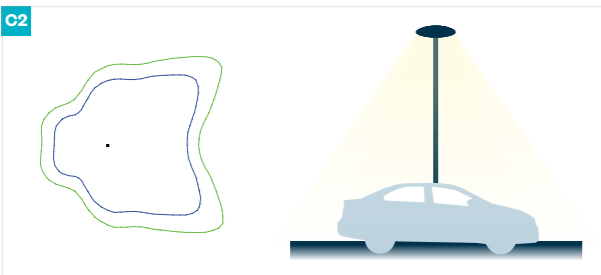
To ensure the most efficient lighting designs, Sephora Performance uses clear glazing and is available with a range of Diamond+ distributions.



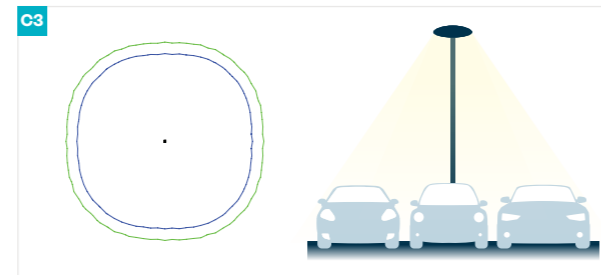
Diamond+ A Optic
Recommended for wide roads and dual carriageways



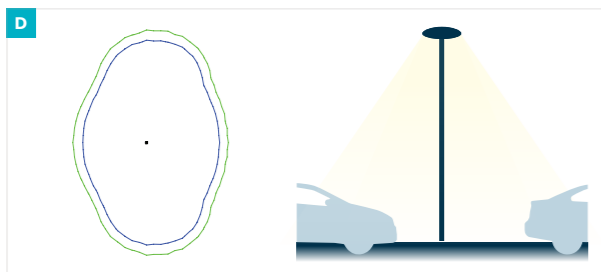
Diamond+ B Optic
Recommended for footpath lighting and narrow roads



Diamond+ C2 Optic
Recommended for large area and car park perimeter lighting. Asymmetric distribution



Diamond+ C3 Optic
Recommended for large area lighting and car parks. Symmetric distribution



Diamond+ D Optic
Recommended for standard roads and wide footpaths

Product	Lumen range	Power range	Max efficacy
Sephora 450	1100-17500lm	11-126W	140lm/W
Sephora 650	2100-34000lm	16-252W	134lm/W
Sephora Halo	1000-16100lm	11-126W	128lm/W



Light for performance: Sephora 650 shown at 10 metres



design features

LEDs

Sephora is equipped with high power LEDs, selected for their compact size and high lumen packages

High quality sustainable design

Packed with innovative design features, manufactured in high pressure die cast aluminium, which is fully recyclable at end of life

LED fascias

The LEDs are recessed within a highly reflective fascia: more than just a decorative feature, it performs two other important functions – 0% ULOR and also, the precisely sloped sides of the recesses catch the light, effectively enlarging the light emitting surface of the LEDs and minimising glare

Cool Zone™

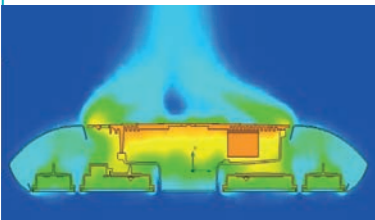
Thermal barrier

Light engines

Various high-performance light engines available – to suit mounting height and application

Thermal Management

Engineered to provide exceptional thermal performance, separately sealed concentric rings allow air to pass through the product, taking heat away from the light engine and control zones. This ensures the longevity of the components and optimises efficiency. Sephora achieves an impressive L90 B10 figure in excess of 100,000hrs, and a luminaire efficacy of 140lm/W



Control

The SmartCore™ is the intelligent heart of Sephora, providing space for internal mounting of CMS nodes, the mounting of external sensors, as well as optional decorative lighting and communications interface

Flexible mounting

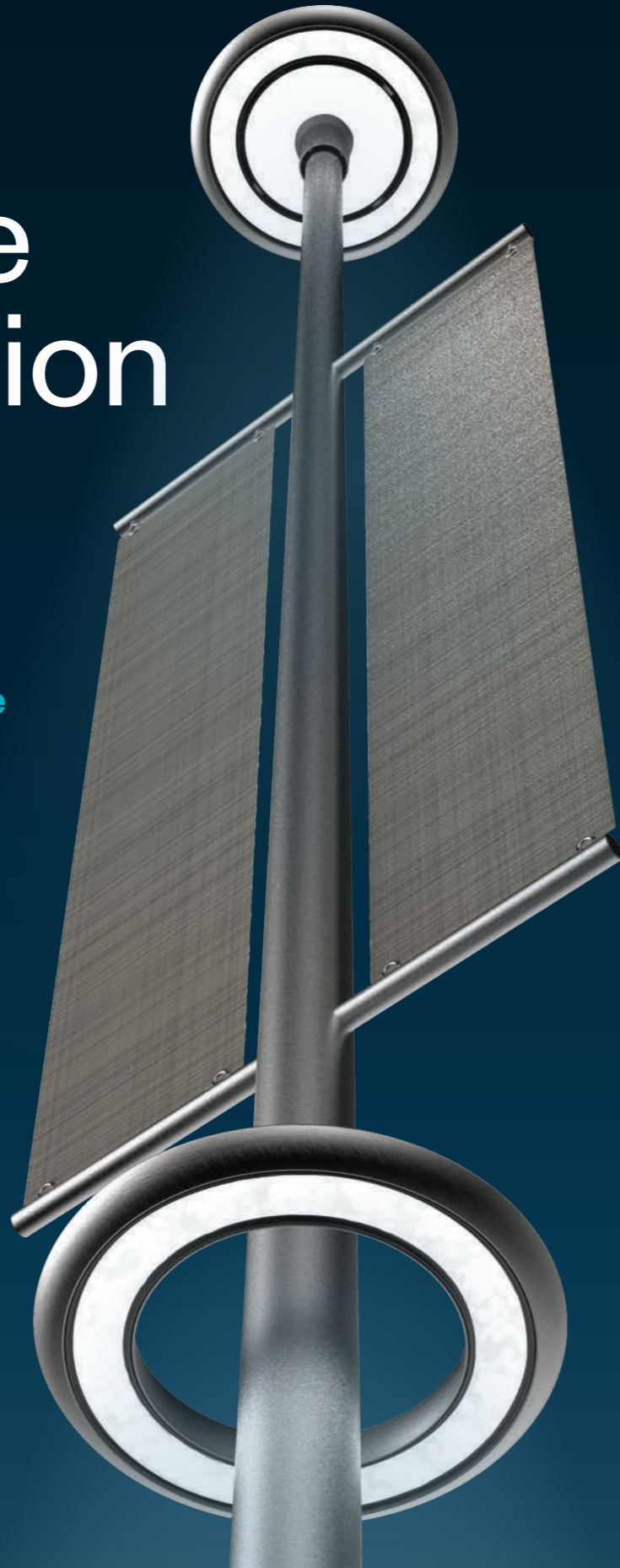
Post top [Ø76/114mm], direct post [Ø76mm] or side entry [Ø42mm]



customise your solution

We believe that every project is unique so why shouldn't the products you use be?

Sephora is available in two distinct styles but, for ultimate design flexibility, work with us to create something truly unique to your scheme.



Illuminated elements

Complementary illuminated spikes, tub finials and central SmartCore™ (including RGB), are available to enhance standard luminaires





control options

SmartCore™

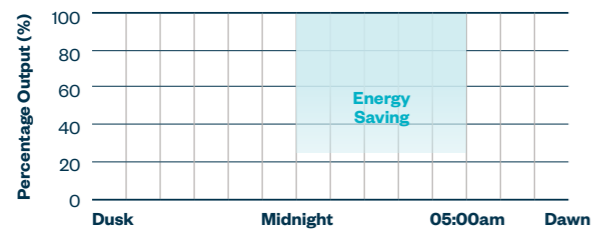
SmartCore™ is the intelligent heart of Sephora; all driver and control components are mounted integrally.

Photocells and part night dimming

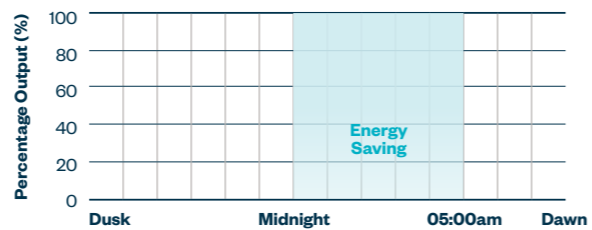
For a basic control option, pair Sephora with a miniature photocell for dusk-to-dawn lighting. To trim burning hours, we recommend a 20lux photocell to limit 'on time'.

To achieve greater energy savings, without the capital expenditure of a full CMS system, consider dimming your lanterns for part of the night. We can pre-program the driver to any regime for tailored energy savings.

Part Night Dim



Part Night Switch



NEMA socket

NEMA sockets allow the external installation of photocells or even CMS nodes. If you are considering upgrading to a CMS or Smart City platform in future, specify a 5 or 7 pin NEMA socket. This will allow the lantern to be converted to CMS without opening the product, future proofing your investment.

Sensors

SmartCore™ allows the mounting of sensors on the underside of the luminaire. Motion sensors can be used to provide increased energy savings by dimming when no movement is detected.

Alternatively, environmental detectors such as pollution or road temperature sensors can be integrated to report data as part of a Smart City installation.

CMS / Smart City integration

To allow our customers the greatest flexibility, we remain CMS agnostic and have supplied luminaires with all the current CMS and Smart City platforms on the market.

Given the generous proportions and flexibility of Sephora, we can fit internal nodes for all major systems minimising the visual impact on the lanterns aesthetic (an external aerial is still required).

The following is a small selection of the control technologies we have installed in our lanterns:

urbancontrol

Telensa

mayflower
SMART CONTROL





technical specification

Performance engine lumen packages and wattages matrix

Product size		Drive current								
		70	100	200	300	400	500	600	700	800
450 - 16 LED	Luminous flux (lm)	1141	1630	3260	5250	7450	9820	12340	14960	17660
	Power (W)	11	15	31	46	60	77	93	110	126
650 - 32 LED	Luminous flux (lm)	2184	3120	6240	10050	14270	18810	23630	28640	33810
	Power (W)	15	31	63	92	121	153	185	219	252
Halo - 16 LED	Luminous flux (lm)	1043	1490	2980	4800	6820	8990	11290	13680	16150
	Power (W)	11	15	31	46	60	77	93	110	126

Glare ratings

Distribution	G Rating
A1	G4
B1	G4
C2	G6
C3	G4
D1	G4

CCT details

CCT	Light output reduction factor	S/P Ratio
4000K	1	1.5
3000K	0.97	1.3
2700K	0.93	1.2

Comparable products for HID replacement schemes

Lamp and comparison	Power	Energy saving (%)
50W SON-T	67	54
450 / Halo @ 200mA	31	
70W SON-T	90	49
450 / Halo @ 300mA	46	
100W SON-T	123	51
450 / Halo @ 450mA	60	
150W SON-T	180	48
450 / Halo @ 650mA	93	
250W SON-T	301	39
650 @ 600mA	185	
45W CPO	75	59
450 / Halo @ 200mA	31	
60W CPO	82	44
450 / Halo @ 300mA	46	
90W CPO	98	39
450 / Halo @ 400mA	60	
140W CPO	154	40
450 / Halo @ 600mA	93	

Product codes

	Code	Example	
Family			
Sephora	SEP	SEP	
Range			
Radius	RA	RA	
Cubis	CU		
Size			
450	45	HA	
	650		65
			Halo
Mounting			
Ø42 Side entry	Ø42 Side entry	Ø42 Side entry	42SE
Ø76 Direct post	Ø76 Direct post	Ø76 Direct post	76DP
Ø76 Post top			76PT
	Ø114 Post top		11PT
		Curved direct post (internal)	CDPI
		Curved direct post (external)	CDPE
Light engine			
Performance	PE	PE	
Colour temperature			
2700K	27	27	
3000K	30		
4000K	40		
Distribution			
Wide road - Diamond+ A Optic (A1)	A1	C3	
Footpath - Diamond+ B Optic (B1)	B1		
Area - Diamond+ C Optic (C2 / C£)	C2 / C3		
Standard road - Diamond+ D Optic (D1)	D1		
Drive current			
The Performance engine is constant current and can be run at drive currents from 70mA to 800mA are available in 25mA increments.			
	Insert drive current in 3-digit format	e.g. 250mA = 250	080
Finish			
RAL 9016 White	40	DB	
RAL 9005 Black	10		
RAL 7035 Light grey	29		
RAL 7046 Mid grey	CF		
RAL 9006 Aluminium	26		
RAL 9007 Metallic grey	27		
DB 703 Metallic dark grey	DB		
Corten brown	CB		
Control			
No photocell	N	A4	
Photocell 35 lux (1:0.5)	U		
Part night switching Photocell 35 lux (1:0.5) (switch off midnight - 05:30) (Elexon regime 762)	A4		
Photocell 35 lux (1:0.5) + pre-programmed dimming (dimmed to 50% midnight - 05:30) (Elexon regime 531)	D8		
3 pin NEMA	E		
5 pin NEMA	C3		
7 pin NEMA	D2		
Pre-programmed dimming*			
CMS compatible*			
SR ready*			
Example code: SEP RA HA CDPI PE 27 C3 080 DB A4			

*Available as standard subject to further information being provided at time of order.

IP66 | IK09 | CLASS I or CLASS II

Key features

Flexible, modular and customisable design

2 styles, 3 sizes and a wide range of mounting options

High-performance light engine

Smart City ready, accommodating internal nodes for minimal aesthetic impact

Low glare

0% ULOR

Options

Sephora 450 (16 LED) Performance: For mounting at 5-8 metres

Sephora 650 (32 LED) Performance: For mounting at 6-12 metres

Sephora Halo (16 LED) Performance: For mounting at 5-8 metres

Style

Radius (curved)

Cubis (angular)

Optical control

Diamond+ A Optic – Wide Road (A1)

Diamond+ B Optic – Footpath (B1)

Diamond+ C Optic - Area (C2 / C3)

Diamond+ D Optic – Standard Road (D1)

L90 lifetime prediction

In excess of 100,000 hours

Total luminaire lumens

Sephora 450 Performance: 1100-17500lm / 11-126W

Sephora 650 Performance: 2100-34000lm / 15-252W

Sephora Halo Performance: 1000-16100lm / 11-126W

Colour temperature

2700K / 3000K / 4000K

Colour rendering index

70Ra (4000K)

80Ra (2200K / 2700K / 3000K)

Total measured luminaire efficacy

Up to 140lm/W

Drive current

Performance: 70mA - 800mA (in 25mA increments)

Mounting

Side entry: Ø42mm

Direct post: Ø76mm

Curved direct post (Halo): Ø76mm

Post top (450): Ø76mm

Post top (650): Ø114mm

Control

CLO: Constant Light Output enabled - for energy savings and dependable light throughout the lifetime of the luminaire

Smart City Sensor Ready: Able to support new Sensor Ready (SR) products

Switch: On/off through conventional PEC, Miniature or NEMA

Dim: Factory set dimmed / customer specified dimming

CMS: Compatible with all available CMS systems

Colours

RAL 9016 White

RAL 9005 Black

RAL 7035 Light grey

RAL 7046 Mid grey

RAL 9006 Aluminium

RAL 9007 Metallic grey

DB 703 Metallic dark grey

Corten brown

Other RAL colours on special request

Materials

Body and entries: High pressure die-cast aluminium

Outer surfaces: Aluminium

Smart Core: Polycarbonate

Finish: Polyester powder coat

Seals: Silicone

Glazing: Toughened glass / Polycarbonate for IK10

Installation and maintenance

Available with various cable tail options pre-fitted

New short form UMS codes available

Operational temperature range: -40°C to +50°C

