

DW Windsor

Company Profile



DW Windsor



Battersea Bridge, London



Southgate, Bath

For organisations and professionals developing external environments, we make light work.

We are an award-winning designer and manufacturer of exterior lighting and smart IoT technology solutions for the global specification market. Founded in 1976, DW Windsor is one of the largest outdoor lighting specialists in the UK. Today, DW Windsor consists of three specialist brands and we employ more than 150 people at our headquarters in Hertfordshire.



Bankside, London

Beyond Illumination

From our beginnings as a luminaire manufacturer, DW Windsor has today evolved into a leading lighting and smart technology provider. Our focus is on creating the intelligently connected spaces of the future, backed by a long heritage of technical expertise, craftsmanship and a pedigree within British manufacturing that spans over 45 years.

DW Windsor's strength comes from the interlinked capabilities of our trio of brands, meaning that our technology and expertise can be scaled to suit any application. Bringing together a range of complementary skills and services, we have a proven track record of delivering lighting and enhanced urban environments from concept to completion.

DW Windsor

Embracing the latest manufacturing processes, DW Windsor has a rich heritage of craftsmanship and a hard-won reputation for delivering precision engineered lighting solutions to the global market.



Urban Control UK

Leading the way in smart IoT technology solutions, Urban Control is an agile system integrator that focuses on delivering the data-led connected spaces of tomorrow.

Pulsar

Specialising in advanced LED lighting and control systems, Pulsar are technical pioneers that bring industry-leading expertise and technology to the business.



't Walleje Business Park, Belgium
Lighting Design: Magic Monkey

DW Windsor Overview

DW Windsor is a service-led manufacturer of high-quality lighting equipment, designed to enhance the beauty of outdoor spaces while also meeting the needs of both people and the environment. As outdoor lighting specialists, DW Windsor's extensive portfolio of luminaires are engineered to offer outstanding quality, performance and longevity.



Street Lighting



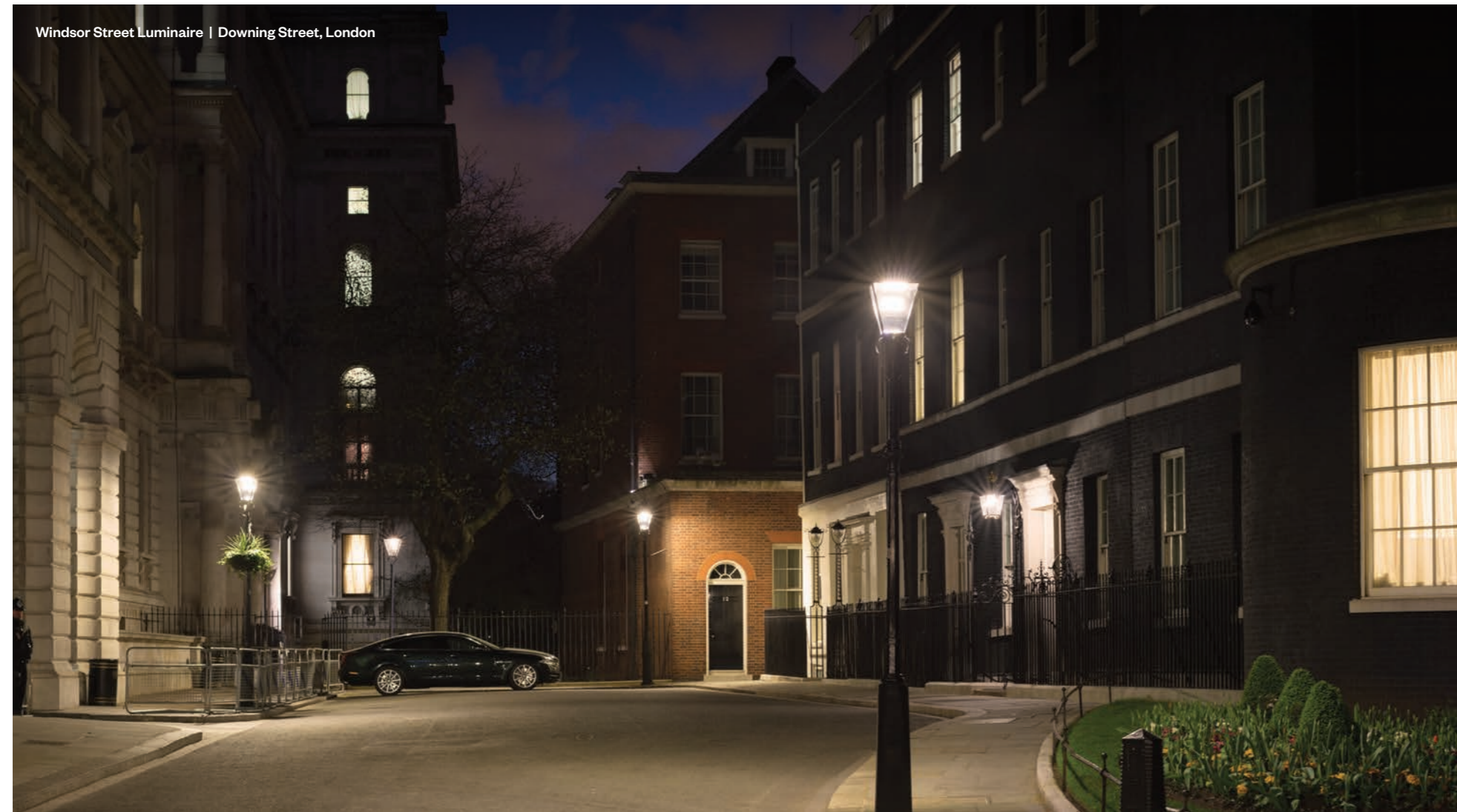
Outdoor Lighting



Architectural Lighting



Garda Illuminated Handrail | Wembley Steps, London



Windsor Street Luminaire | Downing Street, London



Sephora Halo Luminaire

Urban Control UK Overview

Urban Control UK creates connected places using smart technologies that add digital intelligence to infrastructure assets. Offering world-class software, market-leading hardware and advanced network capabilities, Urban Control develops scalable, data-driven solutions that save money, reduce carbon and help improve the quality of life in urban environments.



urbancontrol



Pulsar Overview

As a leading architectural lighting manufacturer, Pulsar develops high quality luminaires and control systems that bring architecture to life with light. Since the company's inception, its focus has been on harnessing advancements in high-power LED technology to deliver a range of specification-grade, dynamic lighting products.



Architectural Lighting



Dynamic Lighting



Control Systems



Luxeos Flood 9 Luminaire | Holy Trinity Church, Blythburgh

PULSAR



King Abdulaziz Center for World Culture, Saudi Arabia
Lighting Design: Magic Monkey



Luxeos Luminaire

Capabilities & Services

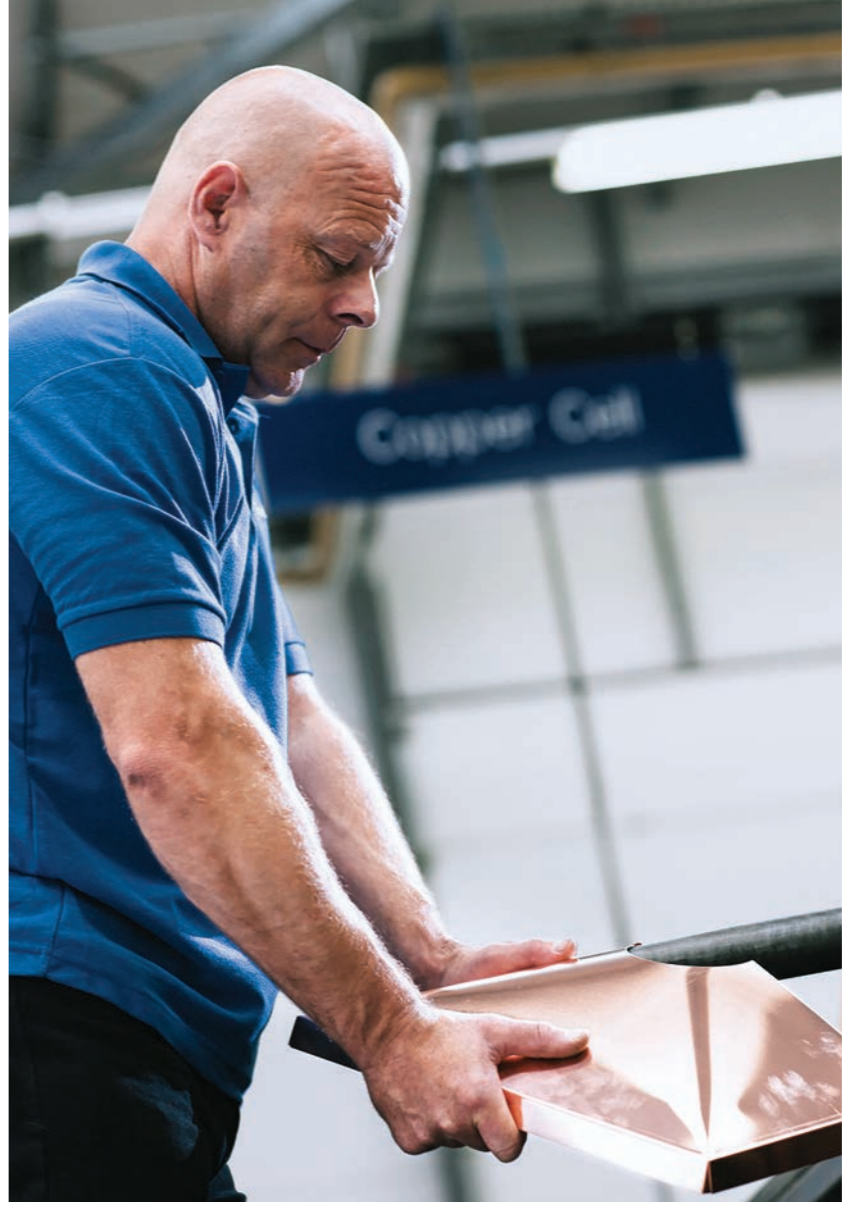
DW Windsor offers a wide range of lighting and smart technology products designed to meet the needs of any project. We work in parallel with the market to develop innovative solutions, backed by a selection of complementary services to support our customers at every step.

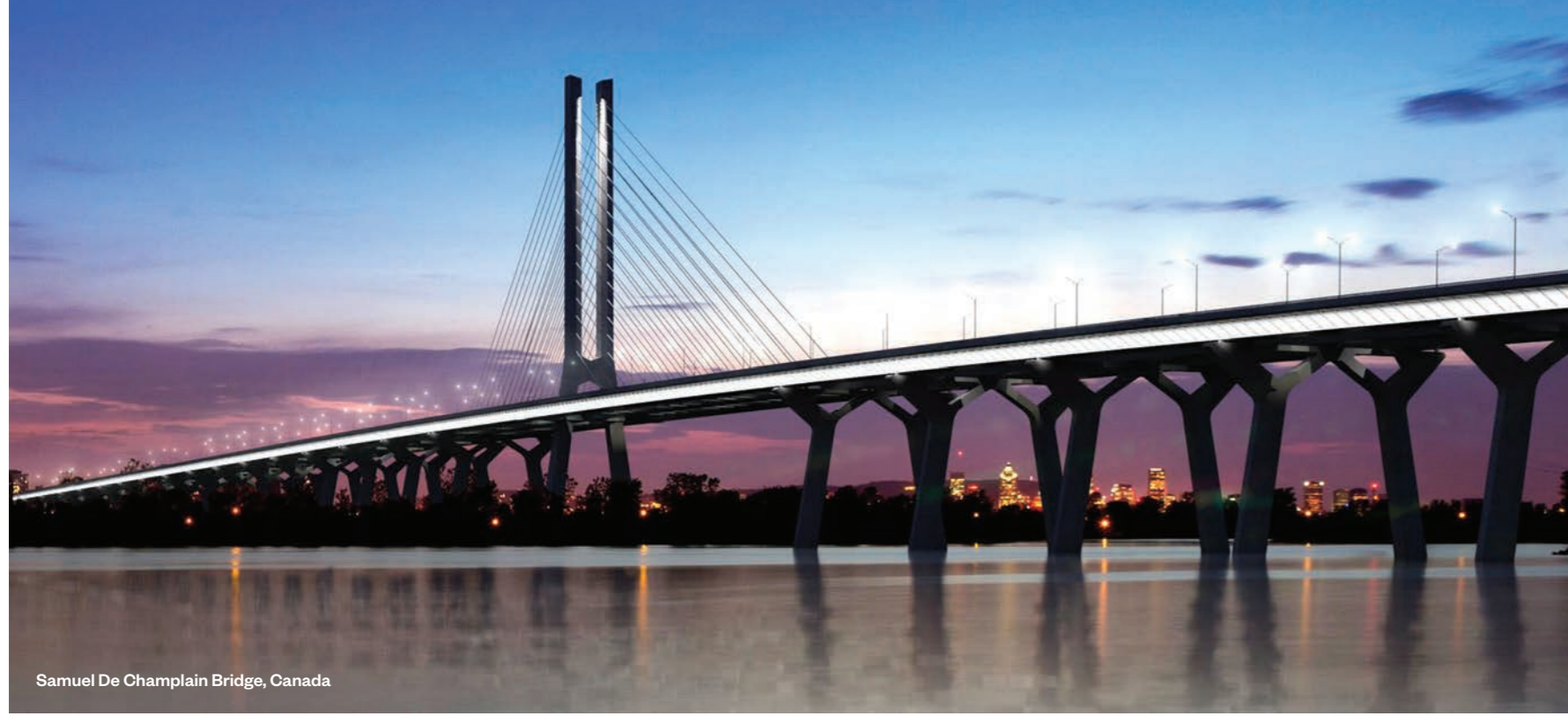
Our stylish, reliable and robust products are ideally suited to many situations and our expert applications team are on hand to provide guidance on product selection and installation. For more demanding schemes that require a unique solution, our dedicated, bespoke design team can develop custom solutions tailored to the individual requirements of any design brief.

Made In Britain

With a rich heritage of skills and expertise, we're powered by people committed to delivering products manufactured to the highest standard.

We're proud of our roots as a trusted British manufacturer, and because we design, test and produce all of our products at our Hertfordshire factory, we can ensure our exacting standards are always maintained.





Samuel De Champlain Bridge, Canada



Bahrain World Trade Center, Kingdom of Bahrain



Millenia Tower, Singapore
Lighting Design: Magic Monkey

As specialists in exterior lighting solutions, DW Windsor has a long-established history of delivering high quality lighting equipment at a global scale.

We have an extensive selection of overseas customers and by working closely with a network of carefully selected, like-minded partners, we're able to support international projects at a local level.

Available Worldwide

Our Commitment to Quality



DW Windsor has a hard-won reputation for delivering high quality products and services that are audited and accredited to the highest possible standards, conforming to all UK and European requirements. We also work hard to ensure that we maintain exemplary levels of occupational health and safety.

Setting the Standard

DW Windsor was one of the first manufacturers within the lighting industry to receive all three ISO 9001, ISO 14001 and ISO 45001 (previously OHSAS 18001) accreditations, giving customers, suppliers and employees assurance that our operational standards and business processes are among the best in the industry.



ISO 9001

Ensures a systematic and consistent approach to the management of our business activities to ensure products and services meet customer and regulatory requirements.



ISO 14001

Specifies the requirements for an effective environmental management system (EMS), including the prevention of pollution, reduced waste and compliance with legislation.



ISO 45001

Sets the benchmark standard for improving employee health and safety through the reduction of occupational injuries and diseases as well as protecting mental health.

Industry Affiliations

As a member of multiple industry bodies and professional organisations, we are an active member of the UK lighting community.



Bespoke Solutions



Redcar Promenade, Redcar

As a specification-led organisation we understand the importance of flexibility and the need to meet specific customer requirements. We have a dedicated specials team that work with our clients to design and build bespoke products – from basic product modifications to completely new and unique structures.

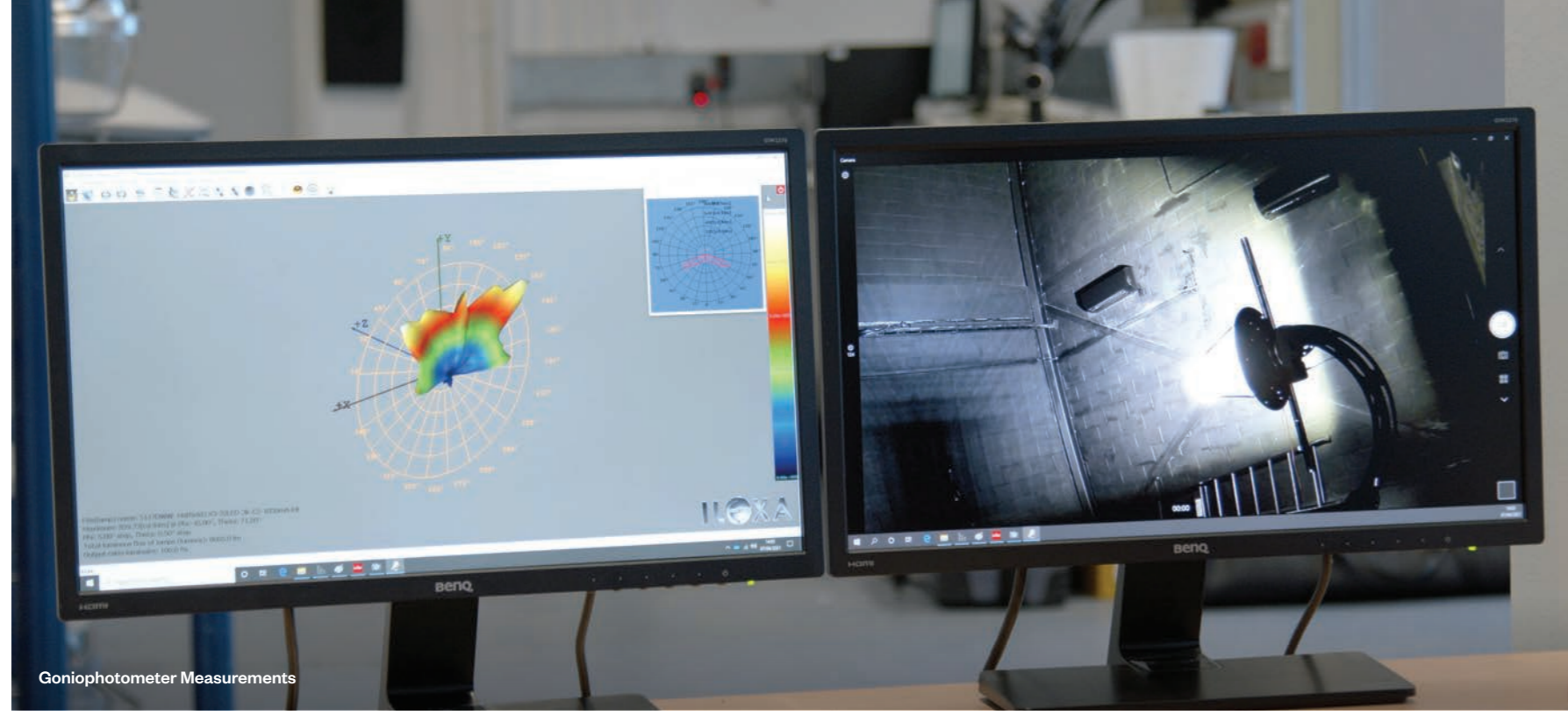
No requirement is too challenging and we can start with as little as a simple concept sketch. In-house prototyping and testing facilities enable us to quickly take projects from concept to completion, and because we manufacture all of our products on-site, we can ensure our high quality standards are always preserved.



Bridlington Promenade, Bridlington



Stockley Park, Uxbridge



Goniophotometer Measurements

We continually strive for innovation in the design and performance characteristics of our products. Accurate measurement and reliable testing are the foundation of our product development activities.

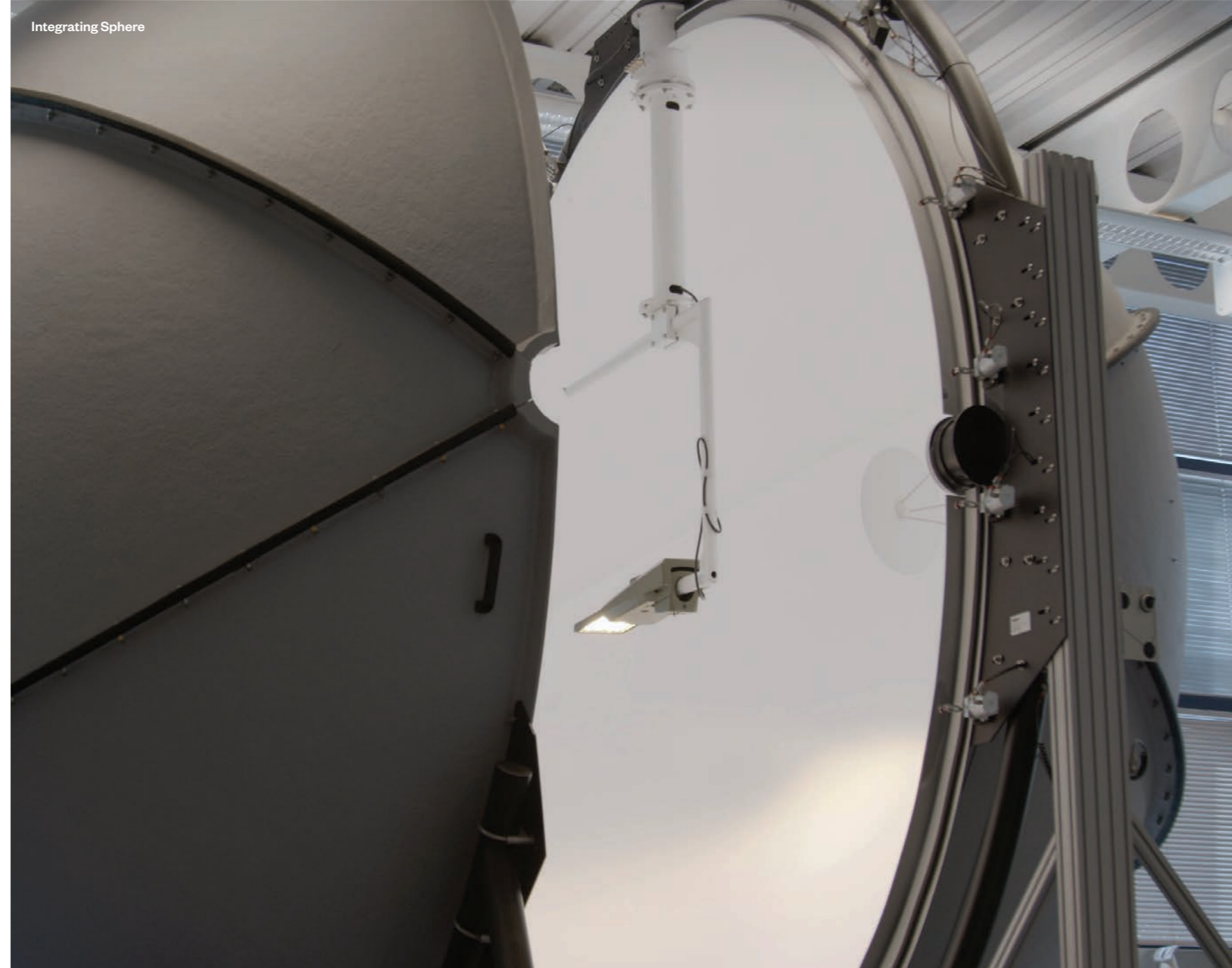
We have one of the most comprehensive lighting laboratories in the UK and are continually investing in the latest equipment to ensure customers can be confident in the quality and performance of our products.



Ingress Protection Testing



Impact Resistance Testing



Integrating Sphere

Engineered to Last

Products & Technologies



Advances in LED technology have meant that in addition to higher quality light, customers can also reduce costs and make energy savings, as well as take advantage of new opportunities in both luminaire design and functionality. The convergence of lighting and smart IoT technologies has also opened up new possibilities in terms of data gathering and processing to identify and solve issues within our urban spaces.

We offer a broad selection of luminaires in a variety of styles to suit a wide range of exterior applications. From intelligent street lighting solutions to dynamic lighting equipment for architectural illumination, we can deliver products designed to complement any outdoor environment.

Architectural Lighting

Our architectural lighting range blends modern, creative styling with high levels of performance to enhance any outdoor environment. From road lights to floodlights, our contemporary luminaire designs allow customers to choose a lighting solution that blends in, or one that stands out to truly make a statement.



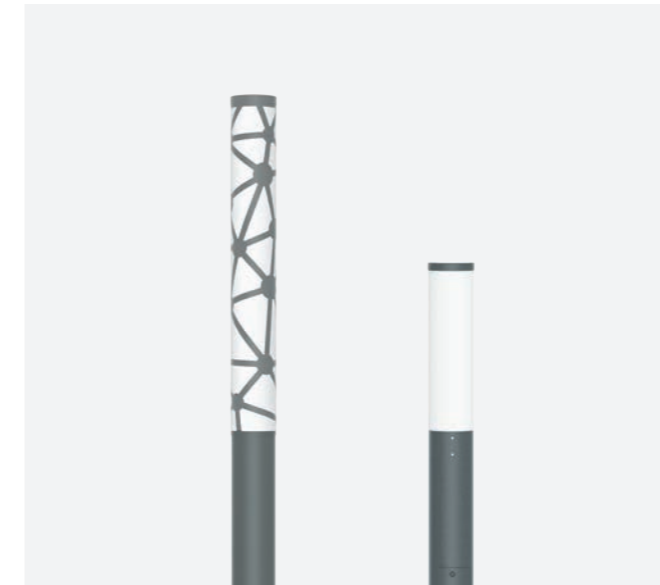
Sephora

Sephora's flexible range of styles, light sources and mounting configurations allows for a unified aesthetic across multiple applications. Sephora's understated design and excellent performance makes it ideal for busy traffic routes and public spaces alike.



Milano

With clean lines and a modern design, Milano is defined by its elegant proportions and quality construction. Designed to enhance urban spaces, from city centres to car parks, Milano provides excellent performance whilst perfectly complementing surrounding architecture.



Silka

Silka is a professional light column that provides dynamic architectural lighting as well as opportunities beyond illumination. The range is available in multiple column and glazing configurations for decorative public realm illumination, orientation and waymarking.



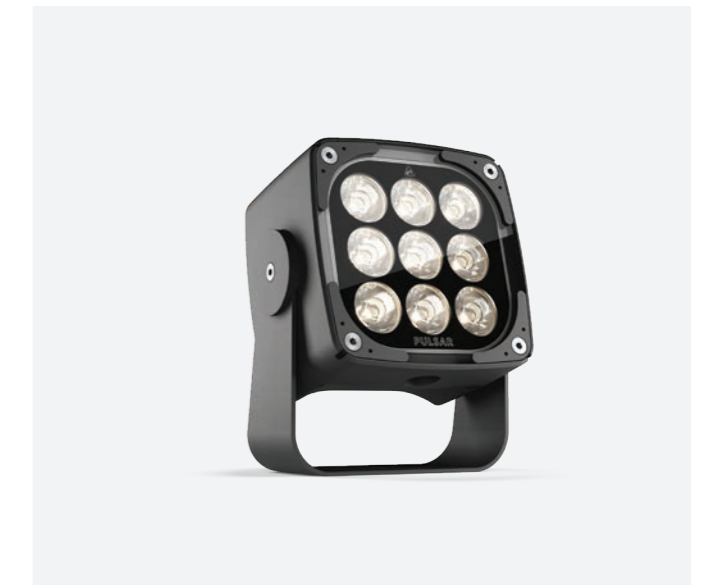
Ren

Discretely proportioned, yet deceptively powerful, Ren is a sophisticated range of bollards that is defined by its geometric design and excellent performance. Ren offers functional lighting for wayfinding with comfortable, ambient lighting for enhanced vertical illumination.



Garda

Garda is a bespoke, award-winning illuminated handrail that combines style and performance to deliver high quality lighting for internal and external applications. The versatile and virtually maintenance-free solution can be tailored to individual project requirements.



Fira

Combining advanced multi-channel LED technology and precision optics, Pulsar's Fira range has been designed to deliver exceptional light quality and performance. Fira is designed to last and has been constructed to withstand the toughest environments.

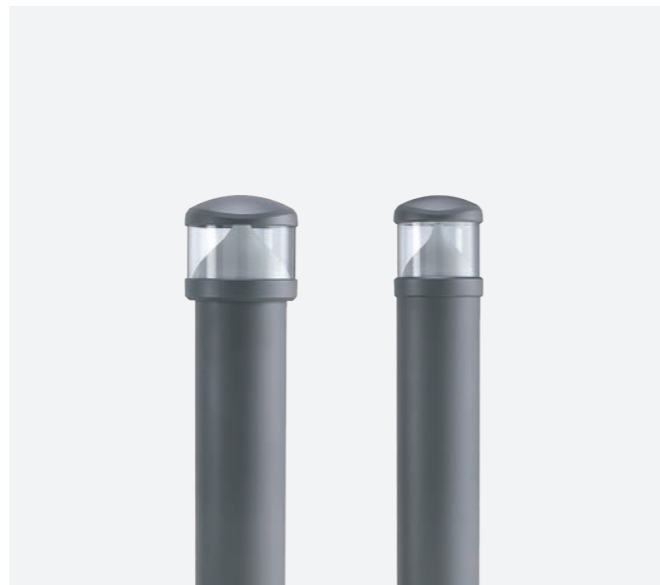
Functional Lighting

Our Functional lighting range offers advanced, effective and practical lighting solutions for a wide range of applications. With flexible options to suit any outdoor requirement, the range provides high performance, efficient lighting for everything from pedestrian areas and car parks to residential roads and motorways.



Kirium One

Offering exceptional performance, easy maintenance and a low total cost of ownership, Kirium One is a highly efficient lighting solution designed with contractors in mind, and optimised for road and footpath lighting applications.



Kirium Bollard

A range of classically styled, vandal resistant IK10 bollards with market-leading performance. Provides illumination with purpose, promoting safe navigation. Available in two sizes and two styles to complement a range of applications from pathways to car parks.



Sabre

A slim, low glare range of performance floodlights, Sabre delivers market-leading efficacy across a wide range of applications. Featuring ultra-efficient optics, Sabre is available in three sizes plus an RGBW version for dynamic, colour-changing lighting.



Kova

Kova is a family of highly efficient anti-vandal luminaires that offers extreme performance for tough applications. Available in a variety of styles and sizes, Kova is fabricated from stainless steel and polycarbonate to provide a certified IK10+ rating.



Kirium Pro S

Developed to support operators as they work to lower energy consumption and cut carbon emissions, Kirium Pro S is our next generation street lighting solution, designed to help lower running costs and deliver substantial long-term savings.

Heritage Lighting

Our Heritage range offers traditional styling and craftsmanship, with superior light quality and energy efficiency from the latest LED technology. Timeless, authentic designs and award-winning optical performance make our heritage luminaires ideal for a wide range of applications from residential to public realm.



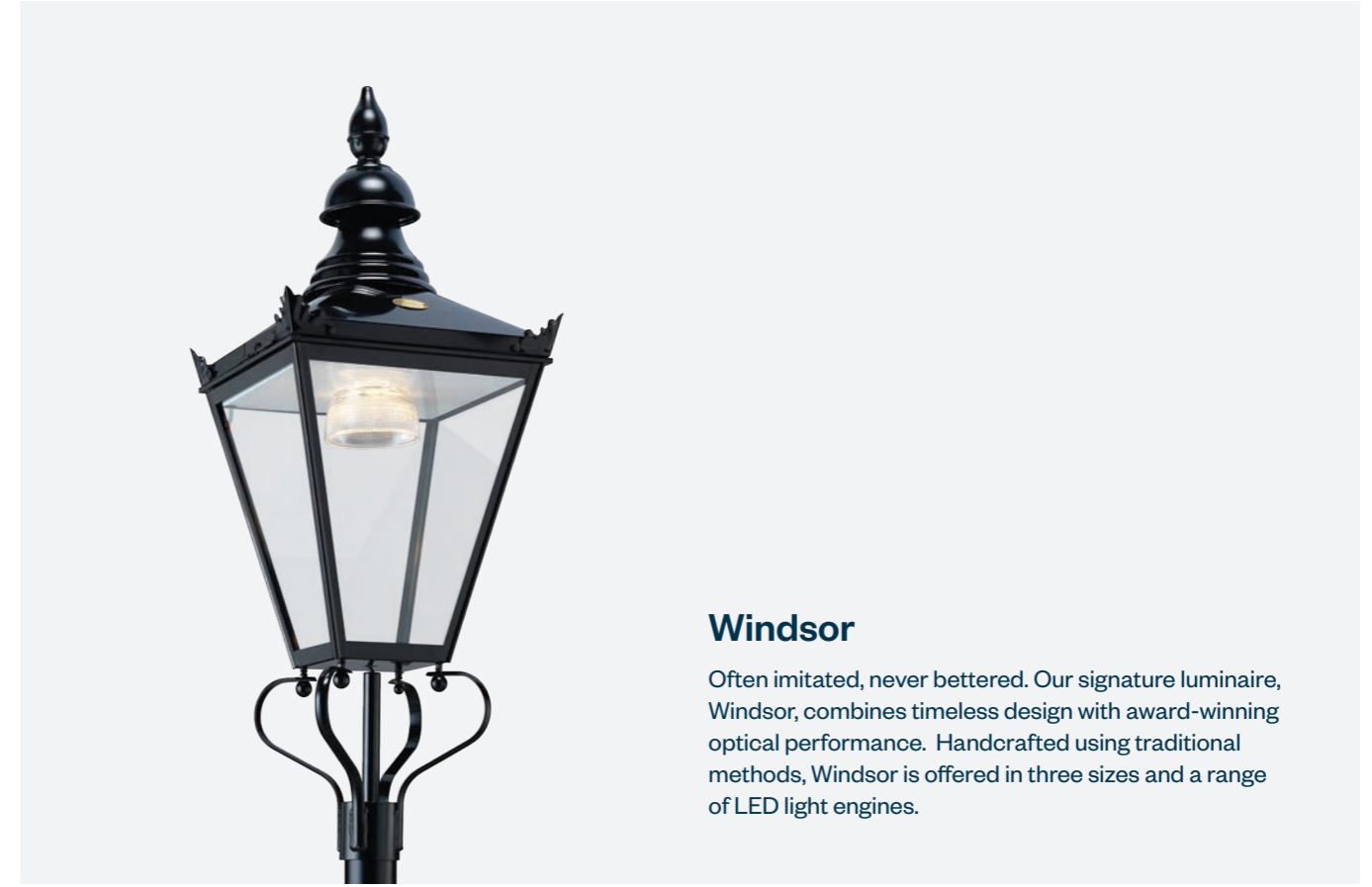
Strand

One of our most popular heritage products, Strand is a bracket-mounted luminaire available in four proportionally identical sizes and a choice of two brims. Suitable for applications from car parks to main roads and city centres.



Knightsbridge

Our six-sided Knightsbridge luminaire is wider than most heritage designs and so can be mounted higher without losing its sense of proportion. It's offered in two sizes with a range of LED light sources to suit both performance and comfort applications.



Windsor

Often imitated, never bettered. Our signature luminaire, Windsor, combines timeless design with award-winning optical performance. Handcrafted using traditional methods, Windsor is offered in three sizes and a range of LED light engines.



Waterford

Waterford's concentrically stepped brim and rounded, domed canopy creates another timeless classic. With control gear housed in its base for extra robustness, Waterford is ideal for multiple applications from housing estates to small car parks and amenity areas.



Ely

Traditionally proportioned with a clean profile, Ely offers the performance and flexibility of our Strand luminaire but redesigned to sit more comfortably within modern architectural locations. Ely is also easy to maintain thanks to its over-centre latches for toolless entry.

Lighting Control Solutions

Lighting controls can greatly enhance any environment in which they are installed. From reducing energy consumption to delivering lower maintenance and operational costs, utilising a lighting control system can provide many benefits. We offer a range of solutions from simple to advanced, designed for a variety of applications.



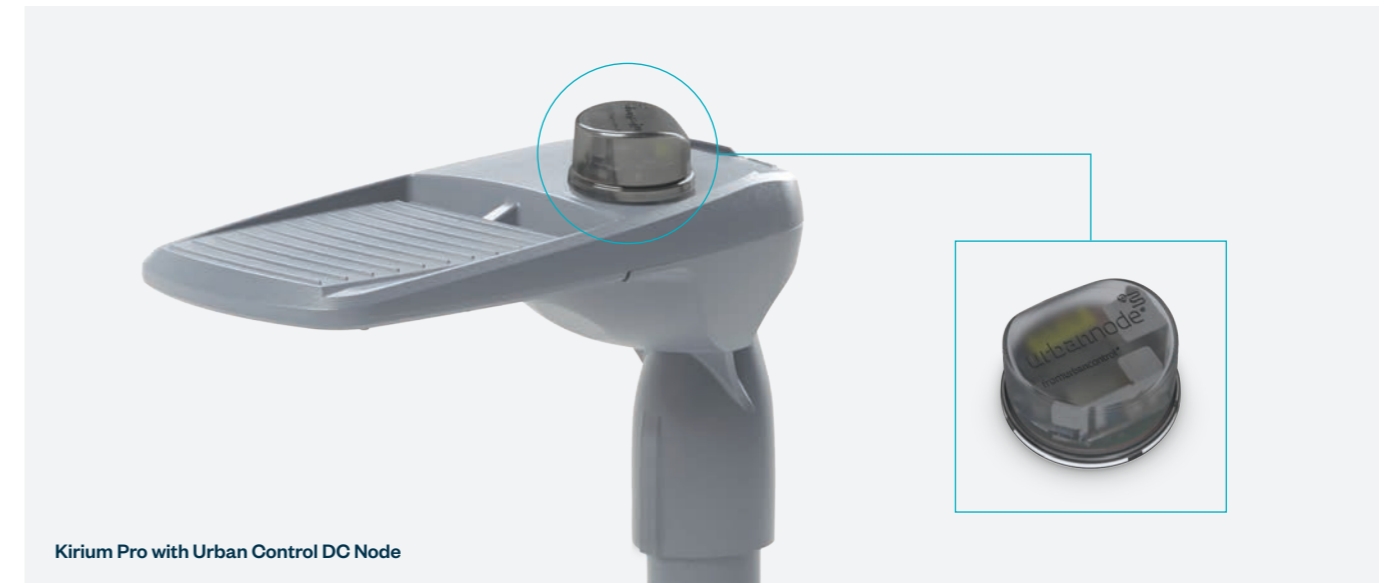
Stand-alone controls

Providing direct control in its simplest form, stand-alone systems are reliable and straightforward, utilising electronic devices such as photocells and presence detectors to manage the lighting. With full manual and dependable control, including factory-set dimming, the benefits associated with this system include improved security and safety of your building, automatic daylight dimming, PEC control with pre-set dimming regimes and an eco-friendly on/off motion detector.



Local network solutions

Local network solutions provide a flexible, cost-effective solution that can be adapted on-site via bluetooth or NFC without requiring specialised commissioning or central control modules. Enabling one-to-one control, or the opportunity for luminaires to communicate together in a small, closed wireless network, this system is compatible with luminaires using sensor-ready drivers and can be further enhanced through features such as dimming schedules or dusk/dawn switching.



Wide network solutions

Built on robust wireless communication networks and connected IoT devices, the wide network is a state-of-the-art remote CMS solution which provides the foundations to build connected spaces through strategic flexibility. Real-time control, connected assets, monitoring, metering and dynamic management of lighting infrastructure are all enabled by CMS. Wide network control offers scalable solutions equally suited to both large towns or cities and small private networks, such as university campuses.

Smart Technology Solutions

Urban Control UK adds digital intelligence to connected spaces. We use smart technology and real-time data to improve the living environment; making key aspects of the urban world measurable and controllable. We employ our smart lighting networks as the foundation for a range of Internet of Things (IoT) solutions.

urbancontrol



Kirium One with Cellular Node

Connecting your assets at any scale

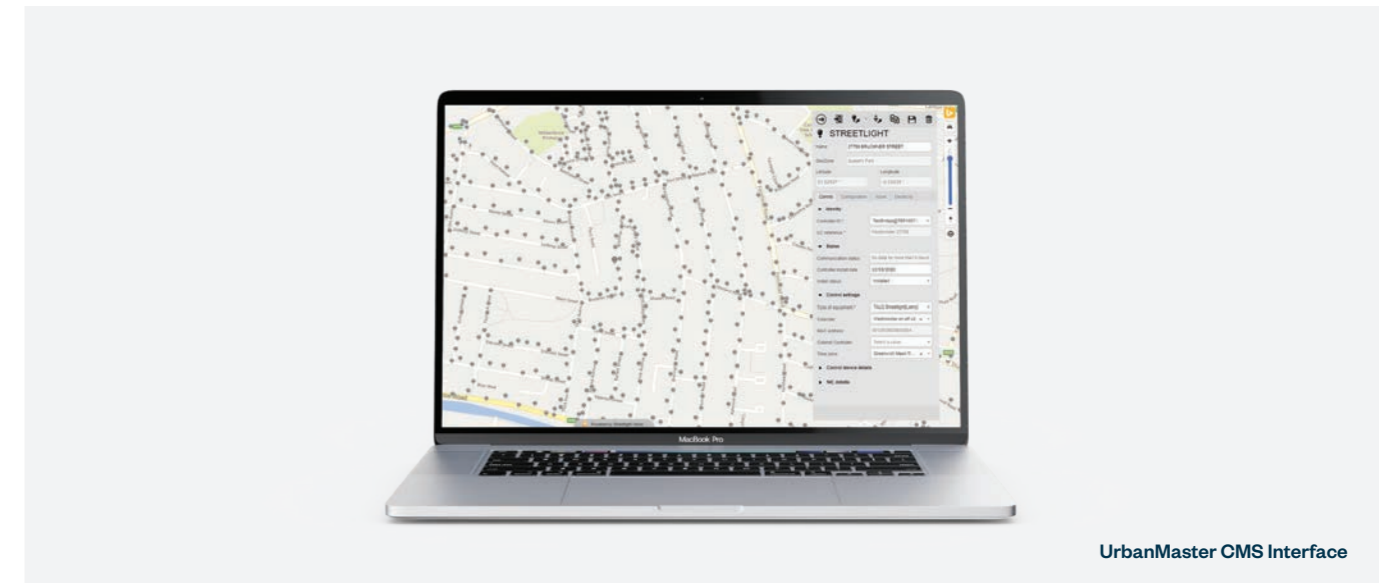
Our robust standards-based mesh network is proven across the world in millions of devices. Offering unmatched performance, even in the most challenging operating environments, it provides a strong, flexible foundation for a wide range of smart technology applications. Using a combination of connected streetlights and sensor devices, we're able to create a complete canopy of high-speed network coverage over an entire city. And for smaller campus deployments we use NB-IoT, the latest cellular standard.



Kirium Pro Vision with Integrated CCTV

Comprehensive sensing of the urban environment

A wide range of sensors are available, either as standalone devices or integrated within our luminaires. These include air quality, temperature, noise, weather and road surface temperature sensors. We use cameras to measure the density, speed and direction of road traffic. We monitor every element of the lighting infrastructure and can continuously assess the condition of concrete assets. We also offer occupancy sensors that can anonymously track the movement of people within a space.



UrbanMaster CMS Interface

UrbanMaster® for asset visibility and control

UrbanMaster, our scalable central management system (CMS), enables you to understand and interact with map-based sensor data in real-time, giving you the power to make the right decisions. Available as a cloud-based product, the fully flexible platform provides dashboards for analysing and visualising asset data, and alerts when action is required. UrbanMaster also enables automatic control, such as changing lighting levels dynamically in response to traffic or pedestrian behaviours.

Market Segments

Light is an essential part of the world around us. The right exterior lighting can make urban environments safer and more welcoming, enhance the impact of architecture, convey the identity of a place and even positively influence behaviour.

With an extensive range of lighting products available in a variety of styles and a choice of light distributions, we can provide solutions to meet the needs and purposes of virtually all external environments.



M1 Motorway, Luton



Infrastructure & Highways

Ensuring that road users have the necessary visibility to remain safe is paramount to the design of our lighting systems for infrastructure and highways. Our products are designed to deliver optimal lighting conditions for motorists whilst remaining energy-efficient and cost-effective.



Rail & Transportation

From the car park to the platform, we offer a variety of products to provide effective and responsive illumination for rail or bus stations. Our extensive catalogue of lighting systems will ensure passengers and staff remain as safe and comfortable as possible.



Derby Railway Station, Derby



St Paul's Vista, London



Public Realm & Open Spaces

Sensitively designed lighting schemes can dramatically enhance the aesthetic appeal of public spaces. We offer products that can draw attention to local architecture; emphasising features and adding a sense of drama, while also elevating the space and making it more inviting.



Amenity & Architectural

Incorporating feature lighting into built environments has the potential to dramatically enhance the visual appearance of any location. All spaces, from car parks to building façades can greatly benefit from the dynamic lighting our range of products has to offer.



The Forum, Hemel Hempstead



Powerday Recycling Facility, Enfield



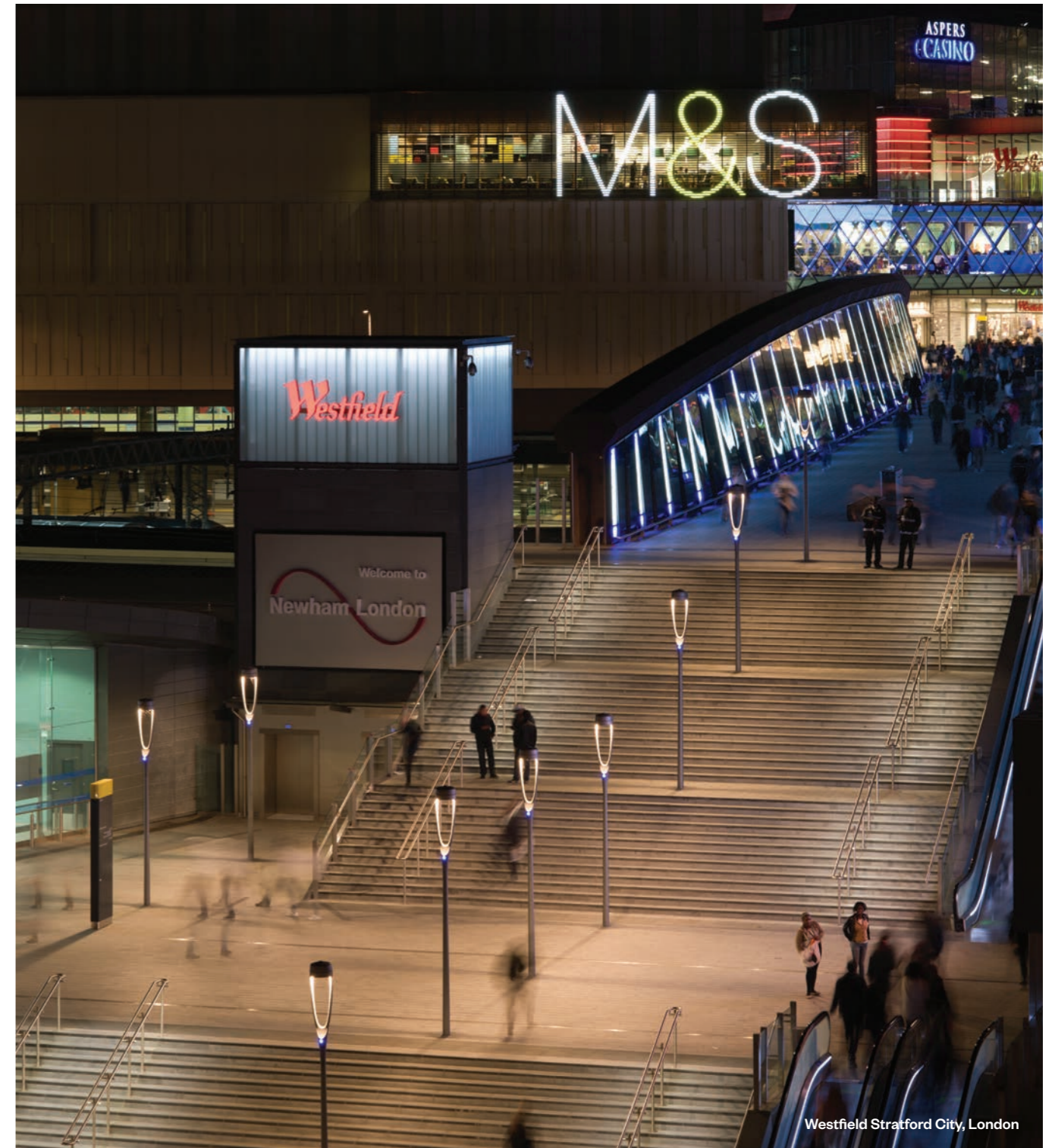
Industrial & Area

For industrial environments, lighting is crucial to ensuring the safety of staff; improving security by deterring intruders and increasing the efficiency of a site. Our extensive product range includes lighting systems designed specifically to meet these important requirements.



Retail & Commercial

Choosing lighting systems that enhance the character and personality of retail locations can greatly benefit the public perception and appeal of a space. Our product collection can help make retail environments more inviting which, in turn, encourages increased customer footfall.



Westfield Stratford City, London

DW Windsor

Pindar Road, Hoddesdon, Hertfordshire, EN11 ODX
+44 (0)1992 474600
info@dwwindsor.com

dwwindsor.com

MAY-2023-C

© 2023 DW Windsor Ltd. All rights reserved.