

Sabre

**A performance floodlight,
the intelligent choice**





Performance flood

A slim, low glare range of floods with integral CMS and market-leading efficacy. Sabre's ultra-efficient optics offer flexibility across a wide range of applications, from general purpose area illumination to architectural grazing.

Key advantages

- Three sizes: offering one for one replacement up to 250W
- Integral CMS (Sabre 2 & 3 only)
- Choice of mounting options, including post top
- Market-leading efficacy
- Fast payback – can reduce energy by more than 65%
- Choice of application specific optical distributions – featuring Diamond+
- Choice of control options for further energy savings
- Long lifetime: >100,000 hours (L80, B10)
- Suitable for exterior or interior applications
- 2700K / 3000K / 4000K

Applications

- Car parks
- Building façades / surrounds
- Rail
- Industrial
- Sports



Control options

From simple factory-set dimming to full CMS: enhance your luminaire through intelligent, connected sensors and control systems.

Benefits of control

- Reduced energy consumption
- Reduced carbon footprint
- Longer luminaire life
- Lower capital, maintenance and energy costs
- Ability to collect data

Bluetooth

For on/off switching, light control and dimming.



Smart control

Integral CMS: connected (or Smart) assets which use wireless communications networks, offering optimal flexibility. Control a single luminaire or group switch remotely.



Simple, stand-alone controls

Factory-set dimming, time switches, photocells and presence detectors. Control in its simplest form.



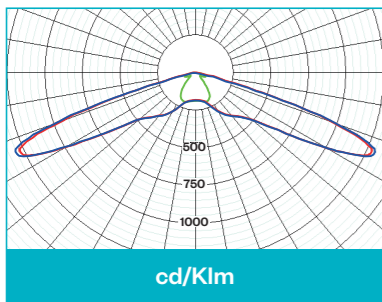
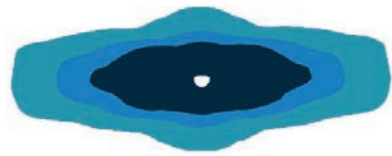


Performance optics

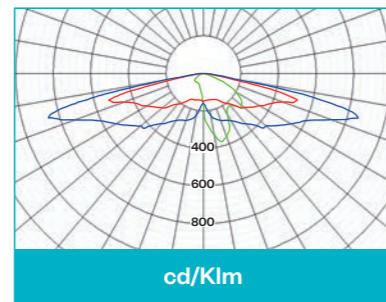
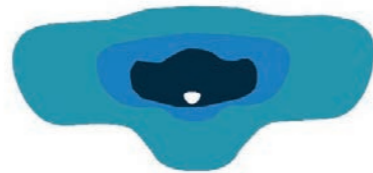
Suitable for a wide range of applications, Sabre's high performance optics are available in a choice of five optimised distributions. For extremely efficient, precision lighting control.

Asymmetric optics

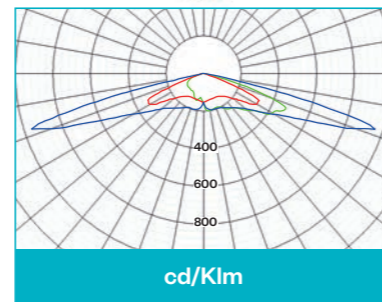
Narrow (B1)



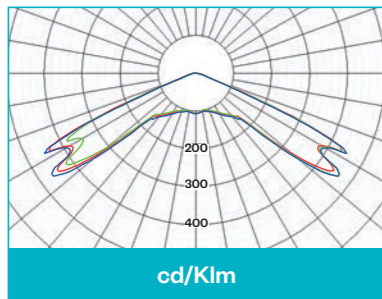
Medium (A1)



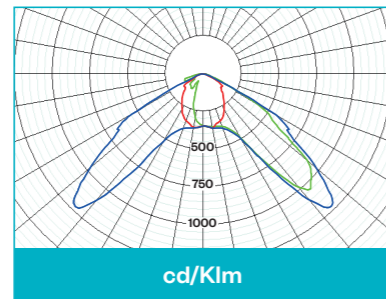
Wide (C2)



Symmetric optic (C3)



Flood optic (F1)





Energy saving opportunities

Product

Sabre 1
(16 LED)
3,000lm @ 22W



Replaces

50W SON-T 

68% energy saving

Typical applications

Architectural
detailing



Product

Sabre 2
(32 LED)
12,200lm @ 105W



Replaces

150W SON-T 

41% energy saving

Typical applications

Service yards



Product

Sabre 2
(24 LED)
8,000lm @ 62W



Replaces

100W SON-T 

50% energy saving

Typical applications

Car park /
area lighting



Product

Sabre 3
(64 LED)
24,300lm @ 198W



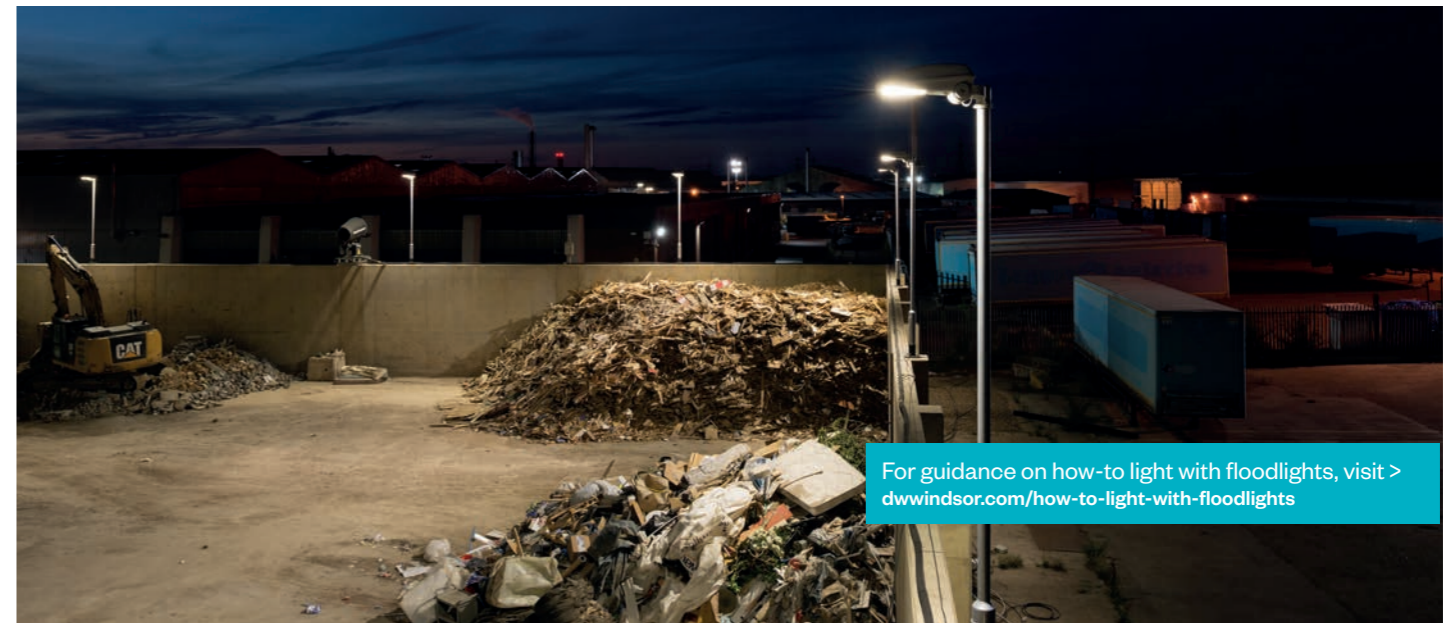
Replaces

250W SON-T 

34% energy saving

Typical applications

Industrial areas &
goods yards



For guidance on how-to light with floodlights, visit >
dwwindsor.com/how-to-light-with-floodlights

Product

Sabre 3
(64 LED)

24,300lm @ 198W



	Target	Traditional 250W SON-T	Sabre 3 LED
Power Consumption (Luminaire)		301W	198W
Luminaire Lumen Output		27,000lm	24,300lm
Luminaire Qty	4	4	4
Column Qty	4	4	4
Glare Rating (GR Max)	55	40	34
Average Lux Level	75 lux	94 lux	90 lux
Uniformity	0.5	0.35	0.59
Power Consumption (Total)		1200W	792W

Replaces

250W SON-T

34% energy saving

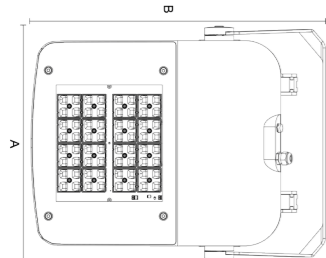
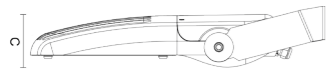
Typical applications

Multi use games areas (MUGA)



Mounting

Wall mounted



Surface mounted - façade



Post top - column mounted



Precision tilt locking



	Dimensions (mm)			Weight (kg)	Windage
	A	B	C		
Sabre 1	283	390	73	3.8	0.016m ²
Sabre 2	386	488	81	7.8	0.029m ²
Sabre 3	460	595	94	13.1	0.045m ²

Sabre

IP66 | IK09 | CLASS I

Features

- Range of performance floodlights with 3 sizes up 24,300lm
- Choice of mounting options, including post top
- 0% ULOR (at 0° inclination)
- 2700K, 3000K or 4000K colour temperature options

Options

- Sabre 1 (16 LEDs) for mounting at 4-6 metres
- Sabre 2 (24/32 LEDs) for mounting at 5-8 metres
- Sabre 3 (64 LED) for mounting at 8+ metres

Optical control

- Asymmetric - narrow (Diamond+ B1)
- Asymmetric - medium (Diamond+ A1)
- Asymmetric - wide (Diamond+ C2)
- Symmetric (Diamond+ C3)
- Wide flood (Diamond+ F1)
- Front and rear glare shields available
(see dwwindsor.com/sabre for further information)

Light source

- High power LED

Lifetime prediction

- 100,000 hours L80 B10

Total luminaire lumens

- Sabre 1: 1600-6400lm
- Sabre 2: 2350-12300lm
- Sabre 3: 6100-24300lm

Colour temperature

- 2700K / 3000K / 4000K

Colour rendering index

- 70Ra (4000K)
- 80Ra (2700K / 3000K)

Total measured luminaire efficacy

- Up to 155lm/W

Mounting

- Stirrup bracket (standard)
- Post top [Ø60-76mm]

Colours

- RAL 7046 Mid grey

Materials

- Body: Die-cast aluminium
- Glazing: Glass
- Seals: Silicone
- Finish: Textured polyester powder coat

Control

- External switch: Time clock
- Photocell: Miniature PEC or NEMA socket
- Dim: Factory set dimmed / customer specified dimming
- Compatible with any external CMS (7 pin Nema)
- Integral CMS (Sabre 2 & 3 only)
- Presence detector

Installation and maintenance

- Surge protection: 10kV as standard

Ordering details

		Code	Example
Model			
Sabre 1		SA1	SA2
	Sabre 2	SA2	
	Sabre 3	SA3	
Number of LEDs			
16 LED*		016	032
	24 LED	024	
	32 LED	032	
		64 LED	064
Colour temperature			
2700K		27	40
3000K		30	
4000K		40	
Distribution			
Asymmetric - narrow (Diamond+ B1)		B1	F1
Asymmetric - medium (Diamond+ A1)		A1	
Asymmetric - wide (Diamond+ C2)		C2	
Symmetric (Diamond+ C3)		C3	
Wide flood (Diamond+ F1)		F1	
Product colour			
RAL 7046 Mid grey		CF	CF
Mounting			
Stirrup bracket (standard)		R	R
Post top (Ø60-76mm)		PT	
Control			
No photocell		N	U
Photocell 35 lux (1:0.5)		U	
Part night switching Photocell 35 lux (1:0.5) (switch off mid-night - 05:30) (Elexon regime 762)		A4	
Photocell 35 lux (1:0.5) + pre-programmed dimming (dimmed to 50% midnight - 05:30) (Elexon regime 531)		D8	
3 pin NEMA		E	
5 pin NEMA		C3	
7 pin NEMA		D2	
Integral CMS - Urban Control (Sabre 2 & 3 only)		IUC	
Integral CMS - Telensa (Sabre 2 & 3 only)		ITE	
Integral CMS - Mayflower (Sabre 2 & 3 only)		IMA	
Presence detector			
Presence detector (Sabre 2 & 3 only)		PD	-
Example code = SA2 032 40 F1 CF R U			

* 850mA maximum

** Available as standard subject to further information provided at time of order.

DW Windsor

Pindar Road, Hoddesdon, Hertfordshire, EN11 0DX
 T: +44 (0) 1992 474600 | E: info@dwwindsor.com
 dwwindsor.com

