

NORDSTROM



Square surface architectural floodlight projector range, with a comprehensive selection of beam distributions.



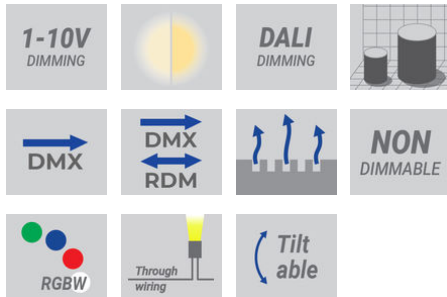
Luminaire Structure

- Die-cast aluminium housing
- Pre-treated before powder coating ensuring high corrosion resistance
- Thermal heat dissipation body
- Single cable entry, through wiring upon request

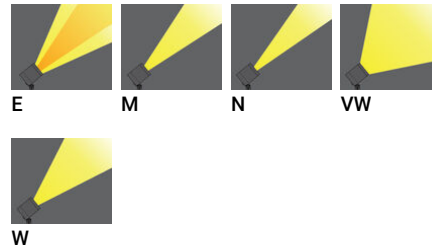
- One IP68 connector supplied with 0.2 m of 3x1.0 sqmm outdoor cable for NOD-50001, NOD-50011, NOD-50021, NOD-50031
- One IP68 connector supplied with 0.2 m of 8x0.5 sqmm outdoor cable for NOD-50002, NOD-50012, NOD-50022, NOD-50032
- Stainless steel fasteners in grade 304 with zinc flake coating (ZFC)
- Durable silicone rubber gasket
- High-efficiency PMMA lens

- Clear toughened glass
- Integral control gear for NOD-50001, NOD-50011, NOD-50021, NOD-50022, NOD-50031, NOD-50032
- Remote driver is included for constant voltage (CV) products

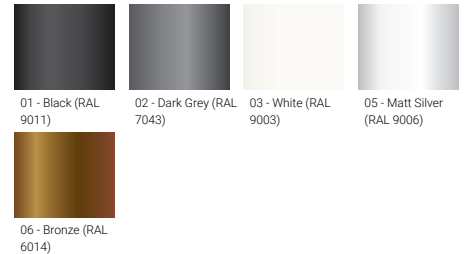
Feature



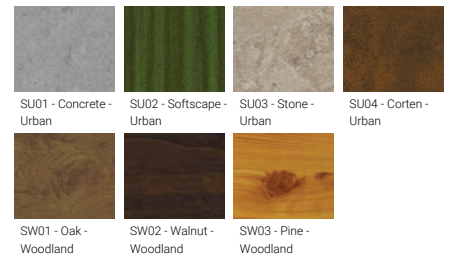
Light symbol



Product colour



Special finishes upon request





NORDSTROM

Technical information

	Model number	Light source	Power	Lumen	Optic	CCT / CRI	Dimming type	Weight	
Integral control gear - 120x120 mm - Class I									
NORDSTROM 3	NOD-50021	9 LED	21 W	1921 - 2364 lm	E [43°x11°], M [17°], N [10°], VW [70°], W [34°]	3000K CRI80, 4000K CRI80	DALI, On/Off	2.7 kg	
Integral control gear - 120x120 mm - Class I - RGBW									
NORDSTROM 3	NOD-50022	9 LED	22 W	853 - 1133 lm	E [43°x11°], M [17°], N [8°], VW [65°], W [26°]	RGBW30, RGBW40	DMX, DMX/RDM	2.7 kg	
Integral control gear - 145x145 mm - Class I									
NORDSTROM 4	NOD-50031	16 LED	35 W	3263 - 4110 lm	E [43°x11°], M [16°], N [10°], VW [72°], W [33°]	3000K CRI80, 4000K CRI80	DALI, 1-10V, On/Off	3.6 kg	
Integral control gear - 145x145 mm - Class I - RGBW									
NORDSTROM 4	NOD-50032	16 LED	28 W	1322 - 1600 lm	E [43°x11°], M [17°], N [8°], VW [65°], W [26°]	RGBW30, RGBW40	DMX, DMX/RDM	3.6 kg	
Integral control gear - 62x62 mm - Class I									
NORDSTROM 1	NOD-50001	1 LED	3 W	209 - 262 lm	E [42°x11°], M [16°], N [10°], VW [70°], W [32°]	3000K CRI80, 4000K CRI80	On/Off	0.9 kg	
Integral control gear - 82x82 mm - Class I									
NORDSTROM 2	NOD-50011	4 LED	10 W	906 - 1112 lm	E [43°x11°], M [16°], N [10°], VW [68°], W [34°]	3000K CRI80, 4000K CRI80	On/Off	1.3 kg	
With remote driver IP-rated - Constant voltage (CV) 24 V - 62x62 mm - Class III - RGBW									
NORDSTROM 1	NOD-50002	1 LED	6 W	166 - 170 lm	M [34°]	RGBW30, RGBW40	DMX, DMX/RDM	0.9 kg	
With remote driver IP-rated - Constant voltage (CV) 24 V - 82x82 mm - Class III - RGBW									
NORDSTROM 2	NOD-50012	4 LED	13 W	406 - 520 lm	E [43°x11°], M [17°], N [8°], VW [65°], W [26°]	RGBW30, RGBW40	DMX, DMX/RDM	1.3 kg	

Accessories

	 Ground spike A50441	 Ground spike A50641	 Linear spread lens A51114	 Ground spike A51141	 Linear spread lens A51214	 Linear spread lens A51314	 Linear spread lens A51414
NOD-50001			.	.			
NOD-50002			.	.			
NOD-50011		.			.		
NOD-50012					.		
NOD-50021	.					.	
NOD-50022	.					.	
NOD-50031	.						.
NOD-50032	.						.

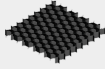
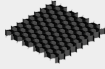
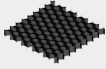
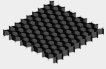



We reserve the right to make technical and design changes.






03:52, 23-06-2023

<https://www.ligman.com/nordstrom-floodlights-projectors-no-pr>
3/

THAILAND
LIGMAN Lighting Co.,Ltd.
17/2 Moo 4, Monthong, Bang Nam Prio,
24150 Chachoengsao - Thailand
info@ligman.com

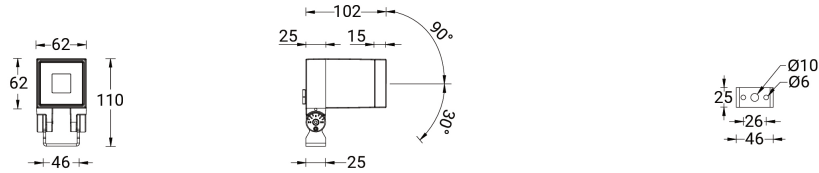
NORDSTROM

	 Honeycomb louvre A51821	 Honeycomb louvre A51921	 Honeycomb louvre A52021	 Honeycomb louvre A52121	 Anti-glare visor A52831	 Anti-glare visor A52931	 Anti-glare visor A53031
NOD-50001	•				•		
NOD-50002	•				•		
NOD-50011		•				•	
NOD-50012		•				•	
NOD-50021			•				•
NOD-50022			•				•
NOD-50031				•			
NOD-50032				•			

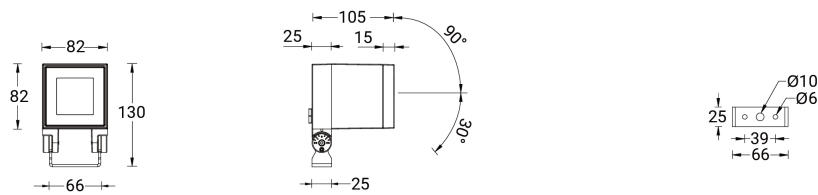
	 Anti-glare visor A53131	 Remote box IP65 A80191	 DALI Control System Control-DALI	 DMX Control System Control-DMX	 DMX/RDM Control System Control-DMX-RDM
NOD-50001					
NOD-50002		•		•	•
NOD-50011					
NOD-50012				•	•
NOD-50021			•		
NOD-50022				•	•
NOD-50031	•		•		
NOD-50032	•			•	•

NORDSTROM

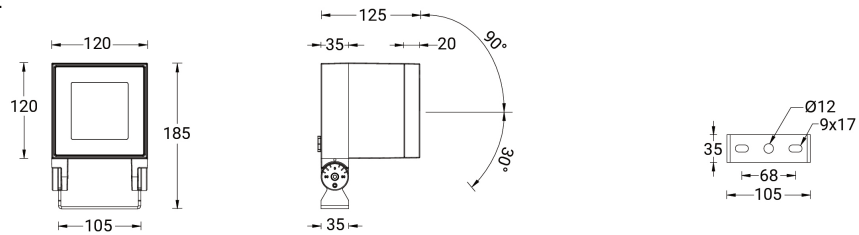
NOD-50001, NOD-50002



NOD-50011, NOD-50012



NOD-50021, NOD-50022



NOD-50031, NOD-50032

