

Installation Instructions

IMPORTANT

IP66 IK10   

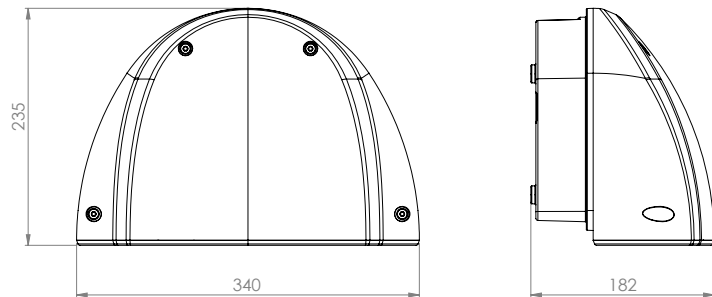
230VAC 50Hz

- DISCONNECT ELECTRICAL SUPPLY BEFORE INSTALLATION OR SERVICING.
- THIS PRODUCT MUST BE EARTHED.
- THIS PRODUCT IS DESIGNED TO OPERATE OUTDOORS. IF REQUIRED TO BE USED INDOORS PLEASE CONSULT DW WINDSOR.
- THE LIGHT SOURCE FITTED IN THIS LUMINAIRE SHALL ONLY BE REPLACED BY DW WINDSOR
- DO NOT LOOK DIRECTLY AT LED LIGHT SOURCE (NON-OPAL VERSION)
- THE LUMINAIRE SHOULD BE POSITIONED SO THAT PROLONGED STARING INTO THE LUMINAIRE AT DISTANCE CLOSER THAN 1.2M IS PREVENTED

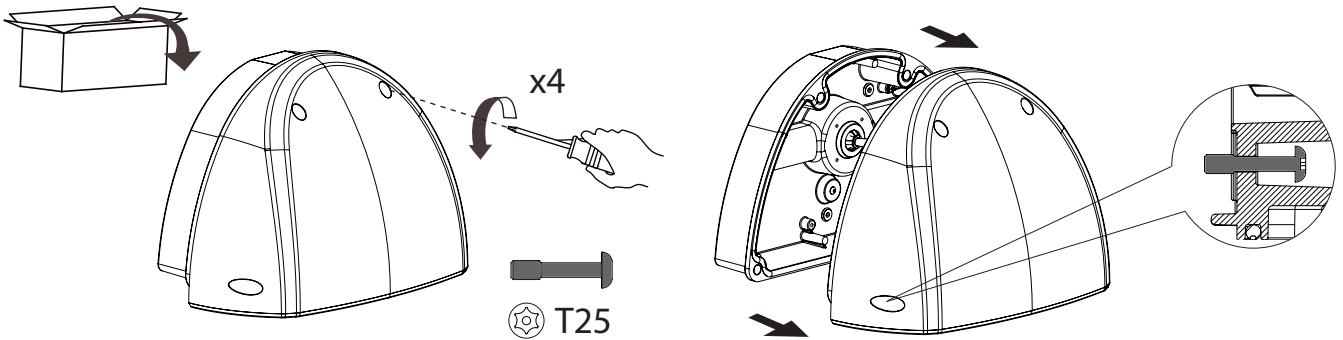
Product Details

	Max. Weight (kg)
Kirium Wall	3.6
Kirium Wall with Emergency	4.4

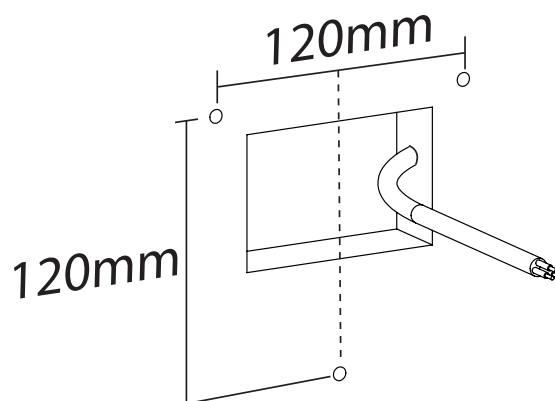
	Power Ranges (Watts)
16 LED	12 - 37W



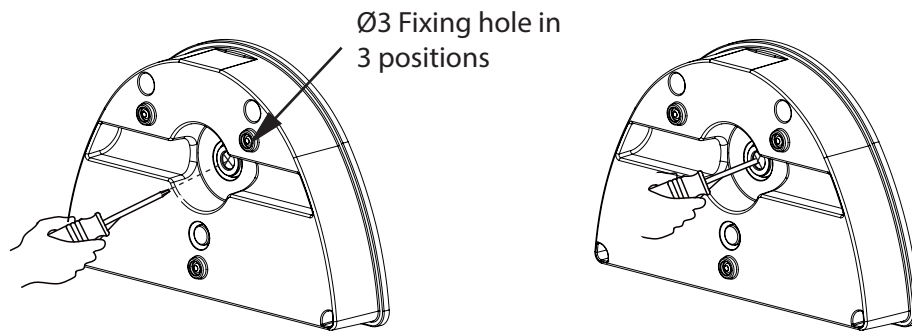
A1



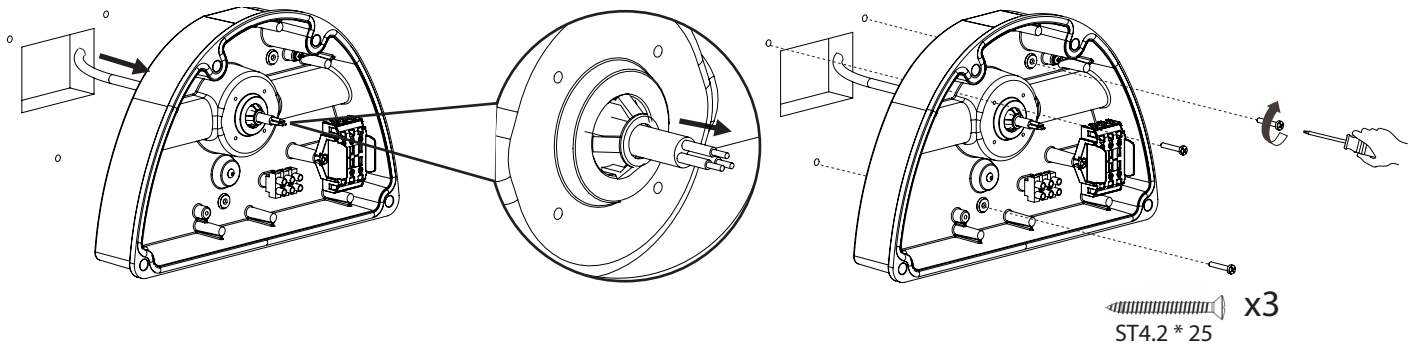
A2



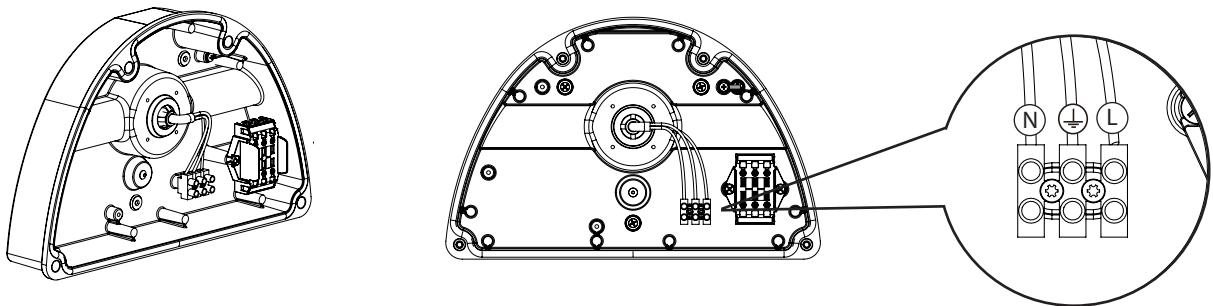
A3



A4



A5



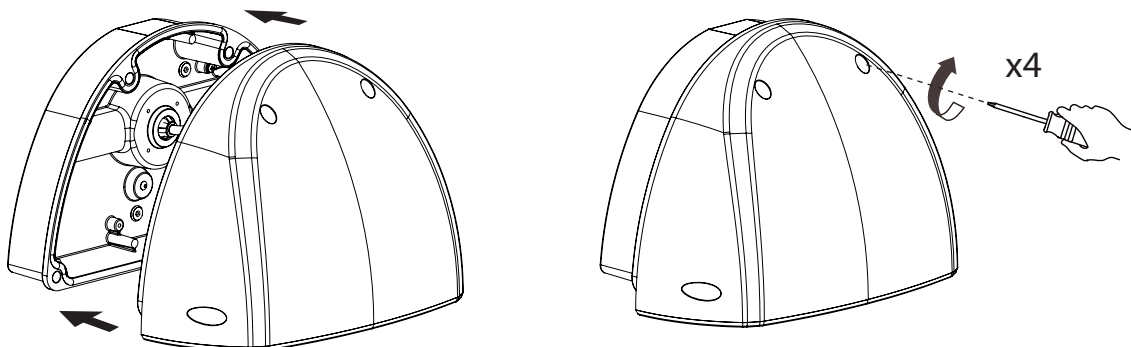
A6



FOR PRODUCTS WITH EMERGENCY OPTION

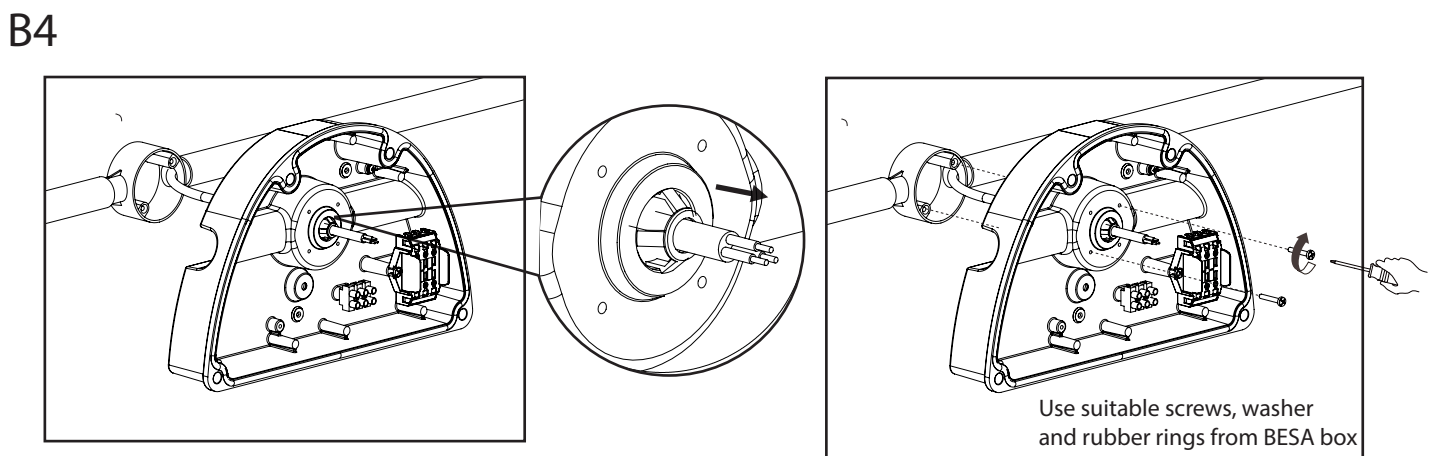
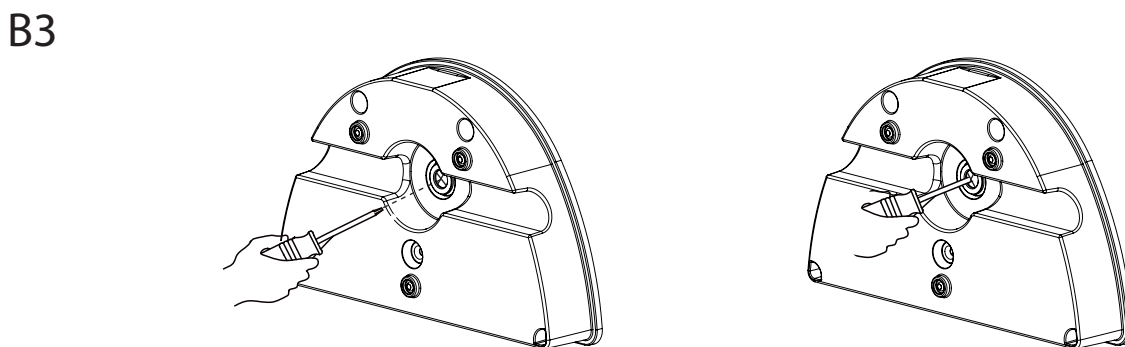
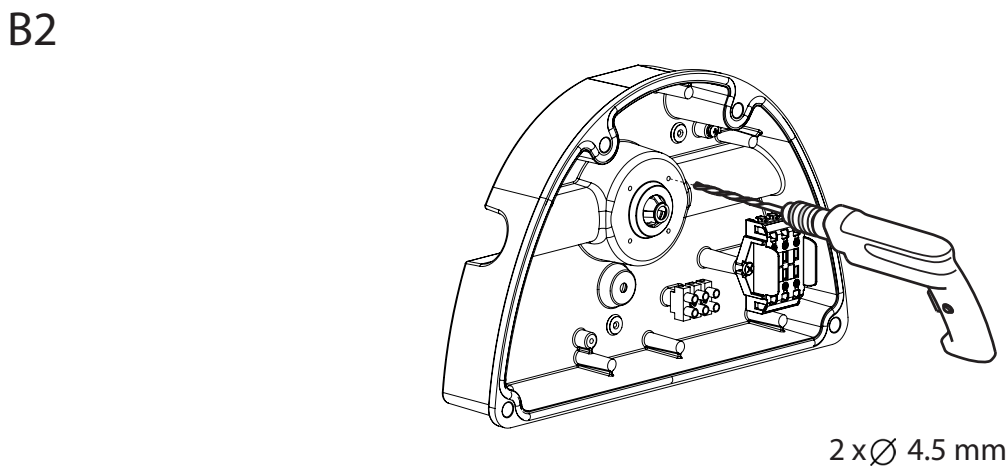
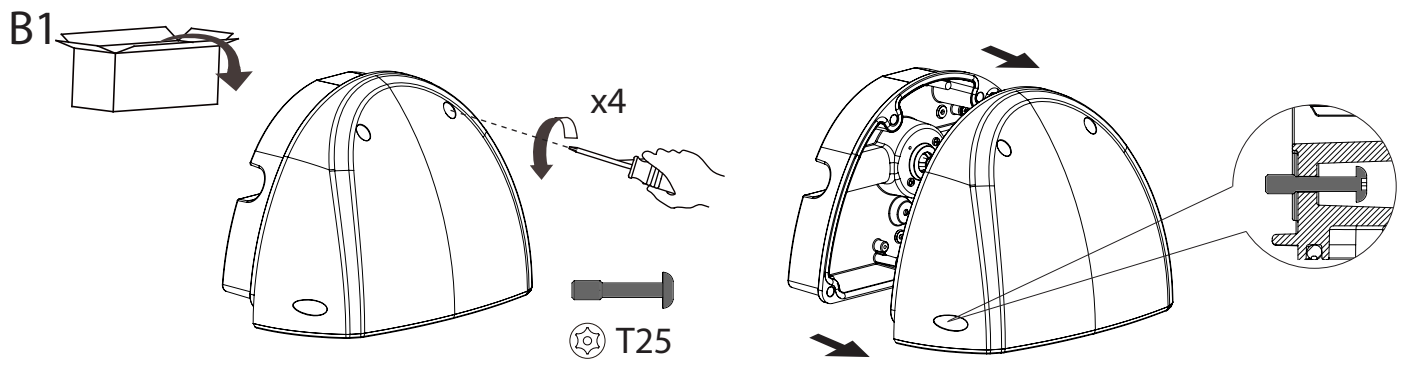
Battery connections are detached during the transportation to avoid battery drainage.

Attach both black and red wires to the corresponding battery terminals before fitting the front section.

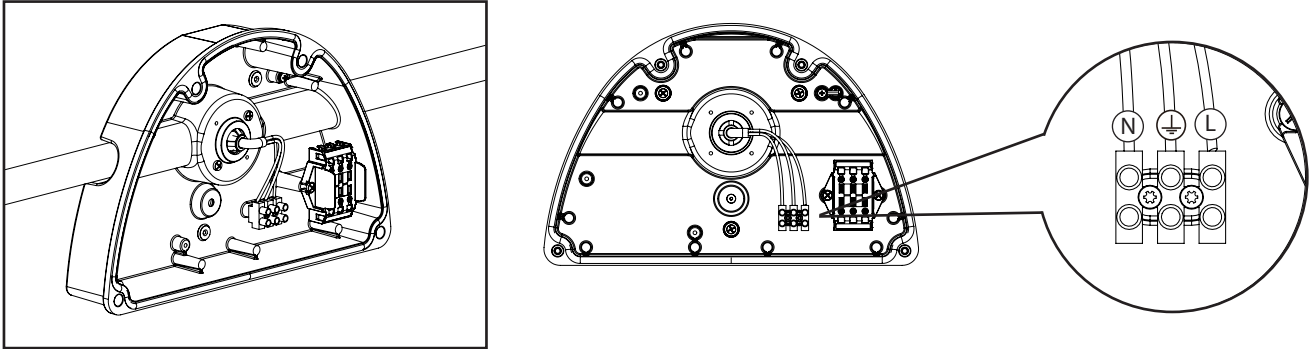


Kirium Wall

BESA mount



B5



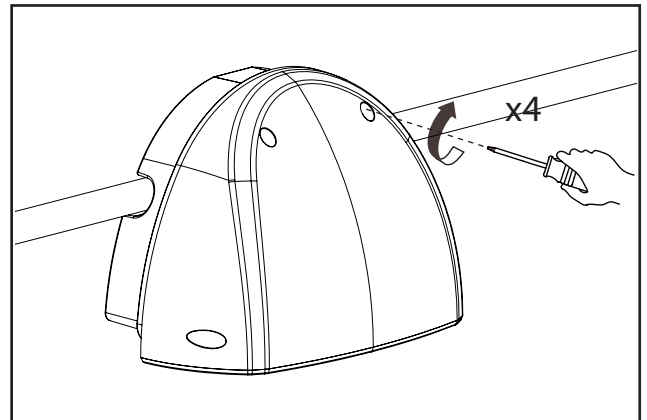
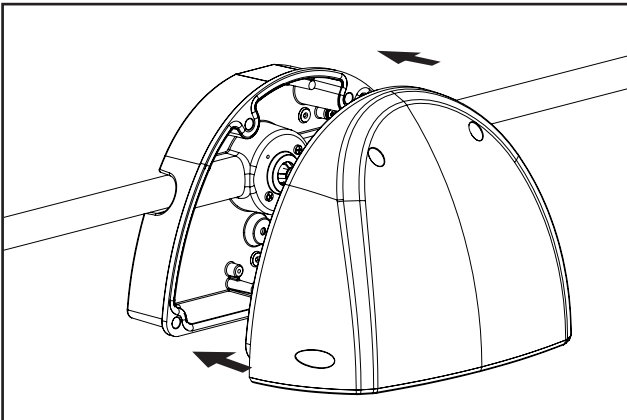
B6



FOR PRODUCTS WITH EMERGENCY OPTION

Battery connections are detached during the transportation to avoid battery drainage.

Attach both black and red wires to the corresponding battery terminals before fitting the front section.



DW Windsor

Pindar Road, Hoddesdon, Hertfordshire, EN11 ODX
T: +44 (0) 1992 474600 | E: info@dwwindsor.com

www.dwwindsor.com

Due to continuous product development the details within this document are subject to change at any time, please contact us for the most up-to-date information or visit: www.dwwindsor.com